

Clarborough & Welham Newsletter

Quarterly: Spring 2022

Her Majesty's Platinum Jubilee

UK Food Waste: House of Lords Report

Volunteer with Python

Covid Evolution - Inside You!

UK signs up for Super Grids

Responding to Rough Sleepers

Volunteering Opportunities

Pisa's Tower isn't the only Leaning building

Local Flood Management Progress

Heritage Open Days 2022

© 2022 Clarborough & Welham IT Group with generous support from Clarborough & Welham Parish Council and distributed by our tireless team of volunteers.

Material published in this Newsletter does not necessarily represent opinions of the Editor. Material submitted without full contact details will not be published. All publication decisions remain the responsibility of the Editor alone.

PLUS: Dog Fouling Amazon Smile Covid Testing updates

Fair Trade Fortnight Muddy Fork News

Our community website: www.clarborough-welham.org.uk



Every adult in the country now needs to get a Covid-19 booster vaccine, because two doses does not give you enough protection against catching Omicron. There are plenty of vaccination sites across Nottinghamshire delivering the booster jab. You can book your booster online or find a walk-in site near you. Remember, it is never too late to have your first or second vaccine dose so please don't hesitate to book yours today. Do you have any questions about the Covid-19 vaccine? NHS Nottingham and Nottinghamshire CCG have put together a list of useful FAQs to help you answer any questions you may have.

For links to all of these aspects, go to your community website (www.clarbrough-welham.org.uk) and click on the **Let's Keep Life Moving Safely** on the homepage.

SAIS (School Age Immunisation Service) Covid-19 vaccination programme for 12-15 year olds in schools started 10th January

From Monday 10 January, children aged 12-15 will be offered their **1st or 2nd dose** of the Covid-19 vaccination in Nottinghamshire schools. Most children can get the 2nd dose from 12 weeks after their 1st dose. School immunisation teams will visit your child's school to give the vaccine.

As a parent or guardian, you will receive a letter or email with information about when the vaccine will be offered, and you'll be asked to give consent. **Please keep an eye out from your child's school for further details.**

Editor



To find out more about Idle Valley's beavers, go to page 20.

Omicron updates

By the time you read this Newsletter it will probably be clear that the latest, Omicron, variant of the Covid-19 virus has been somewhat less dangerous than earlier variants. At the time of writing reports from South Africa, where the Omicron variant first appeared, have confirmed that Omicron is much more infectious than earlier variants but that its effects are generally less severe.

South African evidence, as of early January, show that infections across the population increased by some 17% compared with the previous Delta wave but that there was a drop in some 37% in hospitalisations and a massive 76% drop in peak death rates.

At the same time, research has pointed to the Omicron variant being some eight times more likely to result in asymptomatic infections which points to why this variant seems to spread so much more rapidly.

Research is also pointing to the evolutions that led to Omicron making the virus more likely to infect the nose region rather than the lungs – one of the factors which would explain its lower serious symptoms. Having said that, this also suggests that the current (time of writing) testing regime in the UK may be in need of revision – as of early January Lateral Flow Testing (also known as rapid antigen tests) were targeting the nose rather than saliva. This could lead to negative results even when infected since the virus could be reaching high levels in saliva before it does so in nasal mucus.

All of this is further complicated because the evidence shows that there are huge variations in the lengths of infections and also in the viral load carried by individuals.

All of this may be concerning but the overall view is that the combination of vaccinations together with previous infections is making our population more resistant to variants of the Covid-19 virus. When coupled with a substantial part of our population taking appropriately cautious day-to-day strategies we can hope that the proportions of series implications reported at the beginning of this article will be the start of a trend that will ultimately see Covid-19 treated in much the way we treat 'flu.

Editor

Love and compassion are necessities, not luxuries. Without them, humanity cannot survive.
14th Dalai Lama

Clarbrough Post Office 

Opening hours:

Monday:	09:00-12:30	
Tuesdays:	09:00-12:30	
Wednesdays:	Closed	All usual
Thursdays:	09:00-12:30	main P.O.
Fridays:	09:00-12:30	services

**Halford Room, Clarbrough Village Hall
 Main Street, Clarbrough, Retford, DN22 9LN**

**If you have any queries, do not hesitate to contact:
 Michael C.Carnall 07836 375 808 / 01427 884 469
 michaelcarnall@yahoo.co.uk**

Natural Parish Flood Management Complete

Over the last 3 years Trent Rivers Trust has installed 3 bunds, 5 ponds, two online storage areas, 38 leaky barriers, 400m of riparian tree planting and a large two stage channel. All these are flood prevention measures and they are in the catchment for Clarborough Beck. This starts at the Leverton Road and the land falls all the way northwards into Clarborough. The works are all before the beck gets to the village. Some of the bunds will reduce the impact of heavy rainfall on Welham.



[Above] One of three bunds created above Clarborough

The principal purpose of the measures is to slow the rate water reaches and enters the lower sections of the beck. This will reduce the chance of water flow breaching the banks particularly in the village and causing flooding of land and property. There are several other benefits including different environmental habitats for plants and wildlife. Trent Rivers Trust took great care to reduce the impact of the works on wildlife and where possible to improve some of the environment.

The cooperation of landowners has been key to enabling the works and they will also feature in the maintenance of the various bunds and barriers. The Parish Council is very grateful to them for their help.

The work has been funded by Nottinghamshire County Council and forms part of the flood prevention strategy that the Parish Council has been promoting with NCC which is the Lead Authority for Flood Management.

Natural Flood Management is only one strand of the flood prevention strategy. Work is still ongoing by Nottinghamshire County Council to implement an "engineered" solution. Initial outline plans envisage a culvert to take flood water away from the present course of the beck through Clarborough and divert it under the fields to the opposite side of the Chesterfield Canal. The Parish Council continues to press for the work to be commissioned. Readers will be aware of the repeated floods that have occurred since 2007 when the idea of a solution of this type was first proposed.

Andrew Avery
Clarborough & Welham Parish Councillor

[Right & below] Two examples of 'Leaky dams' which are made of natural woody materials, laid in streams and ditches. They are designed to reduce the downstream flood peak by temporarily storing water by holding it back within the



stream's channel or encouraging it to spill onto the banks behind the barrier. both of which slow the flow to lower levels.

[Right] Tree planting which helps to reduce 'flash flooding' from sudden rainfall both in terms of their physical presence but also their ability to absorb water from the soil making it more absorbent.



LAWNMOWERS

Tony Halford



**Plant & Grass
Machinery
Specialist**

36 Albert Road, Retford, Notts. DN22 6JB

Tel: (01777) 860 704

Mob: 07976 941 407

Clarborough & Welham's past

It is important to remember that the Parish of Clarborough was so called until 2006 when it became Clarborough & Welham Parish. Until 1934 the parish ran virtually to the centre of Retford, down Moorgate and Spital Hill. As the industrial revolution accelerated in the early 1800s Clarborough Parish began to experience increasing population, particularly at the Retford end.

The following article from Doncaster Gazette of 24th April 1840 gives a flavour of that pre-1934 parish:

Clarborough – population 2163.

The parish is thus divided – Clarborough 180; Welham 80; Bolham 50; Moorgate & Spittal Hill, 1853. Four Dame schools, with about 60 pupils; and one boarding and day school, which has about 24 girls. These schools are supported by payments from the scholars.

There are three Sunday schools, two at Moorgate, for boys 103; for girls, 182; and one at Clarborough, 16 boys and 23 girls. The Sunday schools are supported by voluntary subscriptions and collections after sermons.

Dame school refers to private elementary schools, usually run by women, and often located in their own home. Dame schools formed the bottom end of the private school sector and essentially disappeared after The **Elementary Education Act 1870** commonly known as Forster's Education Act, after William Forster MP, who drafted it. The 1870 Act introduced compulsory, universal, elementary education to 'the masses' in England and Wales. At the time, 'scholars' as pupils were then known, had to attend school from age 5 years until they were 12. Forster's

Education Act also resulted in head teachers of these schools having to compile Log Books – many of which are still extant. Those for Clarborough School started with an entry for 1st May, 1871 although whether the school existed prior to that remains a subject of research since it sat so close to St.John the Baptist church it could have been a church school prior to 1871.

As this article shows, even in 1840 the substantial majority of Clarborough parish residents lived in Moorgate and Spital Hill. Since everyone was, at that time, expected to attend church every week, the walk to St.John the Baptist church in Clarborough's Church Lane would have been a real 'drag' for families. This fact explains why, in 1829, a 'Chapel of Ease' was opened on Moorgate to provide much easier access church facility for folks living at that end of the parish. When the parish was divided in 1934, Moorgate's Chapel of Ease became St.Saviours Church in its own parish so reducing Clarborough to its current form.

Editor

Clarborough Christmas Tree Lighting Raffle Prizes Thankyou

Many thanks must go for the generosity of local businesses and groups for providing most of the raffle prizes for Clarborough's 2021 Christmas Tree Lighting Fair:

A.W.Bacons & Sons, Burlesque Chair Exercise. Charlie Bear, Cheeky Monkeys, Everest Restaurant. Pawfect Paws, Pizza Milano, SPAR Stores, Sprinkle of Cerys, Thai Bowl, Welhams Honey, Zero Six Photography

ANDI GRAY

PAINTER & DECORATOR



- INTERIOR & EXTERIOR
- QUALITY PAPER HANGING
- DOMESTIC & COMMERCIAL

- QUICK & QUALITY TURNAROUND ON RENTAL PROPERTIES

07837 370827

andigraypropertyservices@hotmail.co.uk

A LOCAL TRADESMAN ON YOUR DOORSTEP

A professional service to a high standard



Clarborough & Hayton Church Services 2022

Sunday 9 th January	Holy Communion at 18:00
Sunday 16 th January	Morning Worship at 10:30
Sunday 23 rd January	Holy Communion at 18:00
Sunday 30 th January	Holy Communion at 10:30
Sunday 6 th February	Hayton Holy Communion at 18:00
Sunday 13 th February	Holy Communion at 10:30
Sunday 20 th February	Morning Worship at 10:30
Sunday 27 th February	Holy Communion at 18:00
Wednesday 2 nd March	Ash Wednesday at 19:00



As part of our Winter Emergency Campaign, Muslim Charity supports needy and vulnerable communities in the developing world as well as right here at home in the UK. We came across a shocking statistic in 2017 when there was an estimated 597 people homeless that died on the streets in that year. We couldn't let that continue. So since January 2018, right up to today (and hopefully something that we will continue while the need exists) Muslim Charity volunteers go out each month to Manchester's City Centre to provide hot food, water and love to the homeless who spend their nights out in the cold.

Maroof Pirzada
 UK Director, Muslim Charity
 Eaton Hall, Retford DN22 0PR

Editor's footnote: For much more on Muslim Charity's Winter appeal, go to our community website's homepage.



Sunday 6 th March	Hayton Morning Worship at 10:30*
Sunday 13 th March	Holy Communion at 10:30*
Sunday 20 th March	Holy Communion at 10:30*
Sunday 27 th March	Mothering Sunday Holy Communion at 18:00*

* Maybe subject to change.

Retford Auto Centre

Vehicle Maintenance & Repair.

Martyn Gregory
 Retford Mechanic with 20 years experience
enquiries.retfordautocentre@outlook.com
01777 800261
Opening Times:
Monday-Friday:
08:30 - 17:30
Saturday:
08:30 - 12:30
121-123 Grove Lane, Retford, Notts, DN22 6ND



Servicing Brakes Air conditioning Diagnostics Clutches Exhausts Suspension Tyres & Balancing
 Wheel Alignment MOTs can be arranged.
 I look forward to welcoming you!

Help For Street Homeless

Walk through Retford or other towns in the area, and it is not uncommon to see homeless rough sleepers on the Street. Naturally, many of us want to help, but we need to know how to do this safely and appropriately.

As Retford's Town Centre Chaplain, I attempt to befriend and support the street homeless people I meet, and people do often ask me "What can I do?" Well, a kind word, or the offer of a hot drink/food often goes a long way. **Many homelessness charities advise against giving cash.**

The offer of warm clothing, if you have anything suitable to spare. If you have time – listen to the person's story in a public place. The advise is don't invite them into your home or offer to give individuals a lift unless accompanied by another adult.

You can help ensure that those who do not have a roof over their heads are known to those who might be able to help find solutions:-

- Bassetlaw District Council Housing Needs Team – 01909 533 533 (Mon – Friday 9am – 5pm) or 01909 534999 (5pm – 9am Mon – Friday, Saturday, Sunday and Bank Holidays)
- Nottinghamshire Street Outreach Team (delivered by Framework) - 0800 066 5356 (Freephone 24 hours).

Encouraging those sleeping on the street to engage with BDC or Framework also provides access to medical and other sources of help to address what are often complex needs. Often, finding solutions is not a quick fix.

Even if you don't have time to stop, then a friendly greeting on the way past will often be appreciated, too.

*Revd David Bean
Retford Town Centre Chaplain*

North Wheatley Local and Family History Society

Interested in your ancestors? Like to listen to Historic and interesting speakers? Then why not join the North Wheatley Local and Family History Society.

The main group meets bi-monthly on Monday mornings, have interesting speakers and a shared love of history. For a full list of 2022 meetings see the link at the bottom of this article.

We also have a Research Group, meeting 3 times a quarter on the second Wednesday of the month starting at 14:00 and take place in the Village Hall, South Wheatley. The first 3 meetings in 2022 are February 9th, March 9th and April 13th. The meeting fee is £10 for the group of 3 meetings.

For more information, please contact Alan 01427 884 147, alan@longhythe.co.uk or Dee 07771 578 956, Dee.miles660@btinternet.com for further details. Full details of our programme for 2022 are available on our website www.wheatleyhistory.co.uk

Alan Guest



Durham's Heating Service

12 YEAR GUARANTEE

Our Services...

- Boiler Installations
- Bathroom Installations
- Servicing & Repairs
- General Plumbing
- Oil, Gas, LPG & Solid Fuel

Now offering
Service contracts
from as little as £15 per month*

0% finance
on new boiler
installations*

*Subject to Terms & Conditions

WORCESTER
Bosch Group
Accredited Installer

HETAS OFTEC safe REGISTER

Call for a free, no obligation quotation & impartial advice: **01777 702684**

www.durhamsheating.co.uk
Email: enquiries@durhamsheating.co.uk
Durhamsheating



Supporting our learners to be the best they can be!

Clarborough Primary School is in the heart of Clarborough village, just outside Retford.

Our modern and spacious building and beautiful grounds provides a fantastic space for our engaging and exciting learning every day.



The school has a dedicated team of teachers, teaching assistants, midday supervisors, office staff, governors and volunteers who work together to ensure our learning environments are safe, calm and purposeful.

Our curriculum has been specifically designed to ensure that our learners know about the changing world around



them and grow as respectful people. Integral to this is our Golden Rule, 'we look after ourselves, others, our school and our planet.'

Clarborough Primary School's popular nursery is a wonderful environment for our youngest pupils to learn through play. Their knowledge of the world around them is developed through



carefully planned and structured activities using inside and outside spaces every morning.

We also offer 30-hour childcare provision each afternoon and spaces are available.



Our well-attended breakfast club and wraparound care provides fun, friendly and safe childcare daily from 7:45 am until 5:30pm to support our school community.

Visits are warmly welcomed and school tours are provided by our House Captains and our Headteacher, Mrs Cowell-Clark.

To arrange an appointment, please call the school office on **01777 708 065** or email **office@clarborough.notts.sch.uk**

Tell me and I forget, teach me and I may remember, involve me and I learn.

*Benjamin Franklin (1706-1790)
American polymath*

Bassetlaw ACTION Centre

MAKING A DIFFERENCE THROUGHOUT BASSETLAW

Bassetlaw Action Centre, Canal Street, Retford, Nottinghamshire, DN22 6EZ

HOME SUPPORT WORKERS REQUIRED

£9.01 per hour plus £1.09 per hour holiday allowance.
Higher rates for weekends and bank holidays.
Pay Review Pending
Own Transport Required as work is throughout Bassetlaw.

The Home Support service aims to enable individuals to remain independent in their own home and provides help and support covering a range of domestic services including general cleaning, shopping, correspondence, befriending and assisted visits.

If you feel that you have the drive, commitment and life experience to bring to this demanding but highly fulfilling role this is an exciting and rewarding opportunity, which offers the chance to make a difference within the community and to people's lives.

Application packs can be downloaded from our website **www.bassetlawactioncentre.org.uk** or are available from
The Bassetlaw Action Centre, Canal Street, Retford, Notts, DN22 6EZ. Tel: 01777 709 650



New Year in the Muddy Fork garden

There have been big changes at Muddy Fork, Retford's 'Gardening for Wellbeing' project based at the Idle Valley Nature Reserve, since the last report in this newsletter. A new staff team is now in place, with Harri (Angharad) Phillips running the garden groups, former volunteer Heather Davidson employed to work on building networks and sales, and a new trustee, Barney Vallance, bringing a wealth of Health and Safety expertise to the board.

There have been changes in the garden too, with a fancy new polytunnel installed just before Christmas thanks to a grant from the D'Oyly Carte Charitable Trust, structural improvements to one of the old polytunnels, new fencing and gates (though needless to say the rabbits will always find a way in somehow!), new beds, new fruit trees, all of these expanding the possibilities for the project and offering the prospect of increased yields and more sales (which help to support the project financially).

What this means is that Muddy Fork is now in need of additional pairs of hands to maximise the potential of the site both with regard to providing a service based on a green approach to wellbeing, and in terms of growing. We would welcome more referrals, whether self-referrals or coming from the variety of agencies, mental health and others, who have referred to us in the past. Anyone who would enjoy spending time in congenial company, engaging in constructive activity out of doors in the natural world, could benefit from joining us. We offer a range of gardening activities for all fitness levels but also bee-keeping, willow-weaving and other crafts. Participants learn new skills, share their own experiences, form new friendships and enjoy being part of a group, all this making a real difference to their mental wellbeing.

We are also seeking more volunteers to join the team. Our volunteers have an interest and experience of gardening and/or our other activities but above all need a supportive attitude with an awareness of mental health issues and the needs of our participants and a willingness to get stuck in! We'd love to hear from anyone who would like to get involved or to make a referral. More details of the project and on how to make a referral can be found on the Muddy Fork website www.muddyfork.org and you can contact us via the website, by leaving a message on 01777 567 005 or by emailing enquiries@muddyfork.org.

Keep calm and carry on..

Winston Churchill (1874-1965)

Amazon Smile for your local charity!

Do you shop online at Amazon? If you register with **Amazon Smile** – at no cost to yourself – Amazon will contribute a small fraction of your purchase price to your chosen charity. All products in the Amazon store that you could purchase in this way cost just the same as the usual Amazon price list, so you as purchaser pay nothing for the service.

Clarborough Village Hall is seeking your support with Amazon Smile. Our charity, Clarborough & District Community Association, is registered with Amazon Smile and with the Charity Commission as Charity Number 502076 – this is all you need to know to register with Amazon Smile, so why not go online right away to: <https://smile.amazon.co.uk/>

Alternatively, go to our community website's homepage (www.clarborough-welham.org.uk) and click on the Amazon Smile heart to find out more...



So, every purchase using Amazon Smile costs you no more than any usual Amazon purchase but our Village Hall will receive a small contribution from Amazon for every purchase you make – go for it!

Greg Herdman
Chairman

Clarborough & District Community Association

If you judge people, you have no time to love them.
Mother Teresa (1910-1997)

South Street Storage

Offers affordable, secure, indoor storage solutions meeting both commercial and domestic needs.

Various sized units available.
Close to Retford town centre. Easy access just off A1.

Suitable for:

- General household items
- Sports equipment
- Student storage
- Documents storage
- Bicycle storage
- Stock storage



Services: Pickup and delivery options available

Open: Mon – Fri 10:00-16:00
Saturday 10:00-14:00

01777 702 779 / 07550 002 242
southstreetstorage@gmx.com

CDCA is seeking additional Trustees

Clarborough & District Community Association (CDCA, Charity Commission 502076) is seeking new Trustees to help power forward. The Board of Trustees is particularly keen to hear from anyone who has financial experience who can guide our chaity to accessing funding for the long-term maintenance and development of our hall building.

We are also keen to engage with younger members of our community to enable us to make our hall available for weekend events such as parties and other special occasions. Last Christmas's Tree Lighting Fair was a really good example of what can be achieved when our younger community works together.

If this sounds interesting, please contact Greg on 01777 700 918 or clarboroughwelham@gmail.com or David on 07501 803918 or dawsondavid@yahoo.com

For more about CDCA and also forthcoming meeting dates, please go to our community website's **Village Hall CDCA** page.

Greg Herdman
Chairman, CDCA

I do not know what I may appear to the world, but to myself I seem to have been only like a boy playing on the seashore, and diverting myself in now and then finding a smoother pebble or a prettier shell than ordinary, whilst the great ocean of truth lay all undiscovered before me.
Isaac Newton (1642-1727)

What's-on Guide available in all Inspire Libraries and also Online



Happy New Year! As we launch our first season of 2022, the focus continues to be on getting visitors back into our libraries in-person to participate in reading, learning and culture, but still with a blend of online to enjoy at home.



So do join us, whether it's for culture or to connect with your community; to get support with your business or use our IT facilities; to grow your skills or learn something new, there's something for everyone and we are here to help and inspire you as we return to normal.

For an online link, go to:

<https://www.inspireculture.org.uk/whats-on/whats-on-from-january-to-april/> or your community website's **Out-and-About ► Retford Library** page.



est.2016
Honey & Fig
Coffee Co.

Coffee Bakery Brunch

www.honeyfig.co.uk

@honeyandfigretford

01777 948610

41 Carolgate Retford

The Leaning Tower doesn't need more support!

A recent visit to Pisa in Tuscany (northern Italy) included, naturally, time in the stunning Square of Miracles (*Campo dei Miracoli*). This area started to be created back in 1063 when construction of the Cathedral of *Santa Maria Assunta* (*Cattedrale Metropolitana Primaziale di Santa Maria Assunta*) began.

Pisa was a maritime republic from the 11th to 15th centuries and so buildings created during these times show many features drawn from their sailors' wide experiences.



[Above: The *Battistero di Pisa* (baptistry) with the *Duomo* and Leaning Tower in the distance.]

Although the Duomo was begun in 1063, additions and developments continued until very recently, most obviously after a serious fire which destroyed the roof and much else in 1595. The Baptistery dates from 1152-1363 and displays the transition from Romanesque (lower, rounded arches) to Gothic (upper, pointed arches) styles.

Although the Tower - the cathedral's bell tower - is most obviously leaning, all of the buildings in this square lean to some extent because their foundations were not very deep and lay on sandy subsoils.

A multitude of tourists try to capture photographs of them holding up the tower – here your editor poses for his wife!



The tower's angle of leaning had progressively increased such that it was closed to the public from January 1990 until December 2001 to enable substantial improvements to its foundations and reduction of tilt to the 1838 value.

Of course, we also have to remember world renowned **Galileo Galilei** (1564-1642), who was born in Pisa.

Galileo had the widest of interests and experiences across the arts, sciences and engineering but his best-known link to Pisa is probably his thoughts on falling objects. His biographer, Vincenzo Viviani, stated that Galileo had dropped two balls of similar sizes but different masses from the Leaning Tower and shown that they hit the ground at the same time. Historians think this was a 'thought experiment' rather than an actual one although Galileo's reasonings around this fact pushed the science onwards towards Isaac Newton's First Law of Motion.

The experiment described by Viviani was actually conducted from the tower of the *Nieuwe Kerk* in Delft in the Netherlands by Simon Stevin and Jan Cornets de Groot and recorded in Stevin's book of 1586.

Another observation by Galileo that led to great progress was that of the swinging chandelier in the cathedral. With no watch for doing timings he used his own pulse as a timing device. This led him to realise that the period of the pendulum (there and back again) was the same no matter how wide this full swing was. Although this was actually a bit of a simplification the idea led to construction of the first pendulum clock by the Dutch scientist and inventor Christiaan Huygens in 1656.

Pendulum clocks remained the most accurate timing devices for some 250 years.

Editor

The strong man is the one who is able to intercept at will the communication between the senses and the mind.

Napoleon Bonaparte (1769-1821)

Goacher's Farm Shop

Wood Lane, North Wheatley



The only traditionally grown Wheatley fruit.

Picked and PYO
Strawberries, Raspberries, Cherries, Plums, Apples, Pears etc
Taste the difference!
Fresh and frozen

Also available;
Asparagus, Turkeys, Honey, Jams, Chutneys, Potatoes, Vegetables, Eggs, Juices and Home baking

Now serving hot drinks

For opening times please
Phone; **01427 880 341**
or **www.goforgoachers.co.uk**

Happy New Year from BCVS! Want to help in your local community? Looking for ways to promote your group? Bassetlaw CVS has been operating for nearly 50 years as a local charity at the heart of Bassetlaw.

We are here to support voluntary and community group development and volunteering needs across the district. Our infographic [right] highlights some of our work over the last year.

Please phone or email as below, to find out how we can help you.

We are also seeking new board members who are passionate about Bassetlaw and can help us to make a difference locally.

If you'd like to join us please contact us on :

admin@bcvs.org.uk or 01909 476 118.



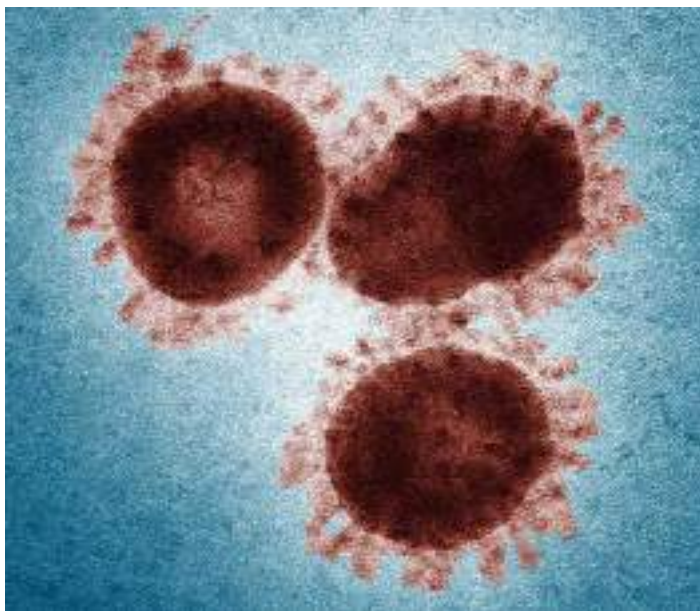
BCVS

Bassetlaw Community and Voluntary Service

Evolution is alive and well – and could be happening inside you!

Covid-19 has surged to the top of our daily news making us familiar with the 'new variant' phrase which refers to changes in the structure of the virus. This is the root of evolution and can happen when something reproduces.

These evolutionary changes to the virus – 'variants' – aim to outcompete other variants by infecting as many people as possible. The evolutionary changes take place inside infected individuals and since the first instances of human infections the evolving variants have moved from infecting two or three other individuals to more than seven individuals – hence the explosions of infections that recent 'waves' have seen. This means that a key to cutting evolutionary opportunities is to reduce the number of infected people – follow now familiar precautions such as mask wearing, distancing, fresh air, washing – you know all of these by now!



Although people have generally developed better immunity to Covid viruses through vaccination programmes and also natural immunity after earlier infections the virus continues to evolve to try to evade our immunity response.

This evolution of Covid viruses may become similar to the flu virus requiring modified vaccines on a roughly annual cycle – we may be getting regular Covid jabs for years to come!

One aspect of Covid transmission that seem to have been ignored (or avoided) in our national responses is the importance of youngsters as transmission agents. It is already clear that infants and young children generally suffer fewer symptoms or serious illness from Covid but are also more often in close contact with older people. Does this make them significant transmission agents?

Another ongoing concern is the possibility that the virus may be evolving in different ways in animal populations. It is pretty clear that the current virus 'jumped' from animals to humans several years ago, so what might happen if the original virus has evolved differently or been transferred to other species which humans may come into contact with in future?

Editor

Boot scrapers - step into the past

Boot scrapers in cities hark back to a time when urban roads were dirt (think of all the mud) and horse-drawn carriages were the main means of transport (think of all the excrement). Consequently, the bottoms of people's boots became very muddy and filthy.



Solution: place iron **boot scrapers** near front doors of buildings for people to use to clean their boots before entering.

As today city roads are paved, boot scrapers have become obsolete. Yet they still remain scattered across historical districts of cities around the world—though most people no longer notice them, let alone realize what function they once served. (Boot scrapers are also found in the countryside, where they still haven't become entirely obsolete.)

Boot scrapers, or at least the remains of their cavities just above pavement level near the doorways of buildings in the older parts of towns, record their importance in times gone by.

As horse-based transport became ever more common through the Victorian period, the mess caused by dust created by iron bound wheels and horse hooves wearing stone-based road surfaces and mud created when rain fell on such surfaces, all combined with the huge increase in horse droppings made walking streets a very messy experience.

This unassuming contraption was once an important element of the sanitation infrastructure as well as of a

unique piece of craftsmanship. Boot scrapers were crafted in all shapes and sizes, with designs ranging from simple to intricate. They were placed in various locations either inside or outside a building's entrance, and were either free-standing, set in a niche, or incorporated into a railing or fence.



For much wider history of UK towns, see:
<https://www.createstreets.com/the-long-history-of-british-land-use-regulation/>



As much as I hate to tempt fate it does seem as though things are getting back into the normal routine.

Our December meeting was fun with a 'ring it yourself' session when Clarborough bellringers brought along the handbells

and used them to explain the principles of change ringing. We got quite good at 'rounds' and 'Queens', but called changes will need a lot more practise.

In January we enjoyed a literary evening with members of Retford Authors' Group – quite a contrast from the previous month's activity. The next meeting is on February 14th and will include a talk on Wedding Customs and in March we will learn about the Land Army.

Why not come along and join us? Our meetings are usually on the 2nd Monday of the month at 19:30 in Clarborough Village Hall and everyone is welcome. The visitor fee is £4 which includes light refreshments and free entry to the raffle.

IMPORTANT ANNOUNCEMENT

In order to celebrate Queen Elizabeth's Platinum Jubilee we are hoping to host an afternoon tea party with entertainment for the over 60s who live in the villages of Clarborough, Welham and Hayton. This will take place on Saturday June 4th at 16:00 in Clarborough Village Hall. The event will be free but places are limited so please book early.

You can contact us about this or any of our other activities by emailing clarbdiswi@hotmail.com or phone 01777 949 847 or 01777 704 711.

Lois Chell



Dog Fouling

Many areas of the Parish are seeing far too much of this ▶



◀ and far too little of this!!!

Please, if your dog does follow a call of nature when out for a walk then make sure you :

.... bag it! and bin it!

There are many bins especially for dog poo in the Parish. If you don't see one of them then you can put the bag in an ordinary litter bin. If you don't see either type then take it home and put it in your own General Waste bin – the green one!

Please follow these ideas – it leaves our precious countryside clean and healthy for others instead of a possible messy, smelly and unpleasant experience.

It is, of course, illegal not to remove any poo your dog makes in any public place.

Some Parish farmers have expressed their concern at the number of dog owners who are letting dogs off the lead on their farmland. This is leading to wildlife and livestock being pestered and disturbed. Owners should ensure that their dogs do not chase wildlife, including nesting birds or birds on the water.

Owners should always make sure that they keep their dogs on leads in fields where there is livestock and under close control at all times. In addition, dogs should not be allowed to run up to other people, as there are many who would be frightened by a dog approaching too close!

Further information is available on the Bassetlaw District Council website.

***Craig Done
 Parish Councillor
 Clarborough & Welham Parish Council***

Do you require any landbased training?
North Notts Training Group
 "Cost effective professional training for a safe and efficient tomorrow"
 Health & Safety, Pesticides, Chainsaws, Fork Lifts, First Aid, Abrasive Wheels, Vermin Control, plus e-learning

info@nntg.co.uk
 07855751689
 www.nntg.co.uk



Investing in Volunteers is the UK Quality Standard for all organisations which involve volunteers in their work.

Bassetlaw Action Centre has recently been notified that it has successfully achieved the Investing in Volunteers UK quality standard for excellence in volunteer management.

Achieving this standard confirms how the Action Centre values the work and support of its volunteers to enhance their own experience and best serves to meet the need of its service users. This has been a year long process of rigorous assessment against the liV 46 quality standards.



Investing in Volunteers is unique in that it is the only standard that focuses on volunteers. It is based on the following six quality areas:

1. Vision for Volunteering
2. Planning for Volunteers
3. Volunteer inclusion
4. Recruiting and welcoming volunteers
5. Supporting volunteers
6. Valuing and developing volunteers

The comment from the liV assessor on the Action Centre was *'It is evident both from this self-assessment and our discussions in the (virtual) workshop that volunteers are at the heart of what you do. They are well looked after within BAC with great care and attention given to proper management of them.'*

The whole process has highlighted the great BAC team spirit of the staff, volunteers and trustees, with their commitment, hard work and support to achieve this prestigious recognition of excellence.

A grassroots community initiative that aims to support Men's Mental Health by encouraging men to open up, feel able to talk to other men and reduce social isolation whilst enjoying a nice walk in beautiful surroundings.



To book a place please email goga@actioncentre.org.uk or visit www.menwalktalk.co.uk/bassetlaw

We have many different volunteering roles at Bassetlaw Action Centre including:

- Driver
- Administrator
- GOGA Activity Supporter
- Befriender
- Minibus driver

For more information, please call:
01777 709 650



GOGA aims to provide support to encourage greater activity in a genuinely inclusive environment, helping to build friendships, maintain health, increase independence, reduce stress and boost self-esteem.



If you would like some support to become more active, please call our team on:

01777 709 650 or email goga@actioncentre.org.uk

**For any enquiries or bookings
phone 01777 709 650**

The Staying Well Programme is a Long Term Health Condition self-management course to help people living with long-term conditions maintain their health and improve their quality of life. The course led by a tutor who is living with a long-term health condition.



It is a FREE 6-week course 2.5 hours a week either face-to-face or virtually via Zoom.

For more information or to find out when the next course is due, please phone:

01777 709 650

Green technology is at the heart of our new aviation visitor experience

The Vulcan to the Sky Trust (VTST) is currently fundraising to build The Vulcan Experience at Doncaster Sheffield Airport and a green technology will be at the heart of the experience.

The Green Technology Hub (GTH) will give young people an insight into how scientists and engineers are tackling the climate change challenge.



[Above: Artist's impression of GTH]

The charity responsible for returning Vulcan XH558 to flight now has just a few weeks to raise the money needed to build the new home for the iconic aircraft that will honour the past and inspire the future.

The Vulcan to the Sky Trust have developed plans for a visitor experience that will be a legacy of this heritage restoration project and will inspire young people to pursue careers in science, engineering, technology, and maths (STEM) roles.

Michael Trotter from VTST explains: "We must address the climate crisis in The Vulcan Experience and provide an opportunity for young people to see what can be done to protect the environment for the future.

"This was Dr Robert Fleming's legacy and we are determined to fulfil his dream of creating a GTH that will focus on the evolution of greener aircraft design and the materials that make them, looking at future technical solutions to the climate change issues generated by aviation.

"Robert was the driving force behind returning XH558 to flight and his death earlier this year shocked and saddened us all. We are now working to deliver his vision of an exciting and interactive GTH that will inform and educate the public about the causes of climate change, especially those arising from aviation, and what engineers are doing to devise new solutions to reduce and eliminate these causes. The GTH will be a space where visitors will be encouraged to contribute to solving the climate challenge by following careers in aviation, engineering, and technology."

Youngsters will leave the Green Technology Hub understanding that;

- Scientists, engineers and technicians can help to solve climate change problems.

- Energy comes from a variety of sources of differing characteristics.
- Aviation has a future, but it may well look different from today.

The Green Technology Hub will feature explanations and demonstrations of the Climate Change Imperative and aviation's contribution to climate change, but it will offer hope by showing there are solutions.

The charity will work with airlines and the aerospace industry to show visitors how they are acting on concerns about climate change. We want the GTH to be a catalyst to inspire and educate, and that visitors will leave with an understanding that scientists, engineers, and technicians can and will solve climate change problems.

But first we need to raise the money needed to build the hangar and individuals or businesses can get involved and help us to reach our fundraising total of £2.2m by the end of the year by either donating to our names under the wing appeal or joining our 558 Executive Alliance," added Michael.

People can support the campaign by adding a name to the aircraft and contributing to the Trust's work to build the new hangar creating a brighter future for heritage aircraft preservation, restoration and operation.

Names will be added permanently under the delta-wing of Vulcan XH558, on the bomb bay doors and undercarriage doors for a donation of £50, and on other designated areas for a donation of £30. Each dedication comes with a personalised certificate that acts as a commemorative receipt for the requested donation. For more information visit www.vulcantothesky.org.uk

Businesses can support via the Vulcan 558 Executive Alliance – a membership group open to businesses from across the UK. Any company that joins the Executive Alliance will, in return for sponsorship, receive a package of benefits including having their name displayed on a dedicated members' wall in the new hangar.

<https://vulcantothesky.org/executive-alliance/>

To find out all that is involved and planned go online to: <https://vulcantothesky.org/operation-safeguard/>

Clarborough CCC

Every Thursday morning we welcome you and your friends to our **coffee and chitchat** (CCC) at Clarborough Village Hall (Main Street, Clarborough DN22 9LN)

Time: 10:45 – 12:00
Coffee/tea and cake £1.20



So, mark your diary and drop in for all of CCC's enjoyments!

Kath Sutton

Whenever you find yourself on the side of the majority, it is time to pause and reflect.

Mark Twain (1835-1910) American humourist and writer

Queen Elizabeth II – the UK's longest working life !

On 6th February, 2022 Her Majesty Queen Elizabeth II will celebrate her Platinum Jubilee – 70 years as Monarch. Born by Caesarian section on 21st April, 1926 as Elizabeth Alexandra Mary Windsor, first child of Duke and Duchess of York (later George VI and Queen Elizabeth). The Royal Household at the time of her birth had King George V at its head with her uncle, Edward second in line and her father, George, as third in line.

Things rapidly changed in the following few years with the passing of George V on 20th January, 1936 and then Edward succeeding at Edward VIII followed by his abdication in December, 1936 bringing her father to the throne as George VI. All of this made Elizabeth, since she had no brothers, *Heir Presumptive* – she would become Monarch on the passing of her father! This occurred unexpectedly as he was found dead in his bed on the morning of 6th February, 1952 which brought Elizabeth back from Kenya at the start of a planned tour of Australia and New Zealand – she was now Queen!

As monumental as these events proved for Elizabeth, we need to scroll back for probably the most important events of her life – her meetings with her future husband. Her path crossed with that of Prince Philip of Greece & Denmark in the 1930s. When they met in 1939 she began correspondence (when only 13) with Philip with their engagement being officially announced on 9th July, 1947 when she was 21.

Back to official duties! Although her unscheduled rush back home in February, 1952 as Queen took place, the name of her Royal House caused huge stresses! This was finally agreed as *Windsor* but with *Mountbatten-Windsor* adopted for Philip and Elizabeth's male-line descendants who do not carry royal titles.

As preparations for her coronation in 1953 headed to conclusion her mother, Queen Mary, passed away on 24th March. Mary had asked, before she died, for the coronation to go ahead as planned which it did at Westminster Abbey on 2nd June, 1953 – see right...



Image: BiblioArchives / LibraryArchives from Canada, CC BY 2.0 <<https://creativecommons.org/licenses/by/2.0/>>, via Wikimedia Commons

An extended bank holiday, from Thursday 2nd to Sunday 5th June. 2022 is now planned to celebrate Elizabeth's Coronation on 2nd June, 1953. Details of local and national events are currently starting to be publicised.

See page 24 for The Big Jubilee Lunches.

How royal matrimonial matters catapulted Elizabeth into the line of accession.

As mentioned above, when Elizabeth was born, she didn't fall into the line of accession to the throne because her father's elder brother, Edward Albert Christian George Andrew Patrick David (how's that for a name!), was first in line.

In 1911 Edward was invested as Prince of Wales and started to take royal visits. At the outbreak of World War I he had reached the minimum age for active service and was keen to participate - he joined the Grenadier Guards in June 1914. However, the Secretary for War, Lord Kitchener along with Government officials would not allow him to the front line, reasoning that if he were to be captured by Germany the consequences could be critical. Nevertheless, Edward did manage to visit the front line on several occasions and received the Military Cross in 1916. His military service made him popular with ex-servicemen immediately post-war.

However, his popularity in the 1920s and 1930s became much more doubtful because of his highly public 'womanising', particularly with married women. These included a number of high profile cases much reported in newspapers but came to conclusion with his relationship with Wallis Simpson. She was a divorced American who was looking to divorce her second husband as her relationship with Edward became more intense.

When King George V died on 20th January, 1936 Edward Albert became king with the title Edward VIII. He immediately displayed attitudes to conventions that offended much of the 'establishment' and by October, 1936 he was expressing his intention to marry recently divorced Wallis Simpson. The debates and arguments that followed ultimately led to Edward deciding to abdicate – the shortest reign of any British Monarch!

After abdication he was created Duke of Windsor and remained married to Wallis in France until his death in 1972.

Fairtrade Fortnight 2022 Choose the World you Want Festival

The COVID-19 pandemic has shown us more than ever how interconnected we are globally. This interconnection is at the very heart of the Fairtrade message and is where your role begins. You are part of the Fairtrade movement, and you have the power to drive long-term change, not only with your shopping choices but with your support in spreading the message.



Fairtrade Fortnight 21st February to 6th March 2022 .

We hope our community supports Fairtrade all year round but Fairtrade Fortnight is a special time when thousands of individuals, companies and groups across the UK come together, to share the stories of the people who grow our food and drinks, mine our gold and grow the cotton in our clothes - people who are often exploited and underpaid. Since last Fairtrade Fortnight we have seen COP26 take place, with significant input relating to trade issues. Over 33,000 campaigners joined 1.8 million Fairtrade farmers and workers there in backing the 'Be Fair With Your Climate Promise challenge' to world leaders. But frustration came as the wealthiest nations failed to recognise the urgent need to invest in farmer expertise by delaying their promised \$100bn annual funding to the most climate-vulnerable countries until 2023. That isn't good enough. "A frustrating conclusion to a summit filled with hope." This was Mary Kinyua, Fairtrade flower farmer and Fairtrade chief representative's verdict.

So what can we do? Take the opportunity this Fairtrade Fortnight to support the farmers on the frontline of the climate crisis.

- Talk to friends about Fairtrade.
- Ask for Fairtrade food or drink when you visit local cafes, restaurants, pubs.
- When you shop look for and choose Fairtrade food, drink, clothes,
- Post on the Fairtrade for Bassetlaw Facebook page <https://www.facebook.com/Fairtrade4Bassetlaw/>

- Reach out to others to share the Fairtrade message Just have a conversation about Fairtrade and encourage others to spread the word.
- Publicise Fairtrade Fortnight - new posters and an explainer leaflet on Fairtrade and the climate crisis are available from Fairtrade Foundation www.fairtrade.org.uk
- Look up online festival events on the Fairtrade Foundation web site and register to stay tuned. You will also find posts and banners for your FaceBook, Twitter and Instagram.

If you want to share ideas you have for Fairtrade Fortnight or link with other Fairtrade supporters - contact Kathy Cowbrough via email kathy.Cowbrough@gmail.com or mobile 07745 811 172

Proposal for new County Council decision-making model

Nottinghamshire County Council agreed in principle at a Full Council meeting on 23rd September 2021 to move to a leader and cabinet model of decision making.

The council has operated a committee system since 2012 but is now proposing to work towards a model of decision making whereby decisions are driven by a Leader and cabinet members (also called an executive system) rather than by multiple committees made up of councillors from different political groups. The Council previously operated a Leader and cabinet system following their introduction in 2000 until 2012.



Further work on the proposals is underway before a final decision is taken in the Spring. If approved at a future council meeting, the changes are due to be implemented at the annual meeting in May 2022.

Please provide any feedback by no later 18:00 **on Friday, 11th February 2022** via:

<https://www.nottinghamshire.gov.uk/council-and-democracy/council-structure/proposal-for-new-council-decision-making-model>

Food waste in the UK – a House of Lords report

Waste and Resources Action Programme (WRAP) charity's most recent report states the UK produced around 9.5 million tonnes of food waste in 2018. It is estimated that 70% of this total was intended to be consumed by people, with 30% classified as “inedible parts”. Broken down by sector, this waste was comprised of:

- 6.6 million tonnes (70%) from households.
- 1.5 million tonnes (16%) from manufacturers.
- 1.1 million tonnes (12%) from hospitality and food service (HaFS).
- 0.3 million tonnes (3%) from the retail industry.

WRAP estimated that this waste had a value of over £19 billion a year and would be associated with more than 25 million tonnes of greenhouse gas emissions. It has said that of this waste, 6.4 million tonnes could have been eaten - the equivalent of over 15 billion meals. The report then considered changes in food surplus and



waste over time. WRAP said that there has been around a 15% reduction in total food waste between 2007 and 2018, with 11.2 million tonnes of food waste reported in 2007 compared to 9.5 million tonnes in 2018. It stated that this total included a reduction of household waste of 18%, with 8 million tonnes reported in 2007 compared to 6.6 million tonnes in 2018.

Impact of Covid-19 on household food waste

In February 2021, WRAP published the results of a series of surveys into UK adults' attitudes to and behaviours around food waste during the Covid-19 pandemic in 2020. Four surveys were undertaken in total (in April, May, September, and November 2020) and each had over 4,000 respondents.

Overall results from the surveys showed a decrease in reported levels of food waste. In November 2019, the self-reported level of the amount of food wasted was 24.1%; in November 2020 this had decreased to 18.7%. The lowest level of food waste, 13.7%, was reported in April 2020, during the first national lockdown.

In April 2020, 79% of respondents undertook new food management behaviours. These included:

- 41% of respondents said they undertook more pre-shop planning than before, such as checking the fridge and cupboards.
- 35% of respondents said they managed food better at home, such as checking use-by dates.

- 30% of respondents started using up more leftovers. The report said that respondents continued with these behaviours in the months following the first lockdown.

UK Food Waste Reduction Roadmap

Launched in 2018, the Food Waste Reduction Roadmap is a joint initiative between WRAP and the Institute of Grocery Distribution (IGD). It consists of a series of milestones for retailers, food producers, manufacturers and hospitality and food service companies to meet in order to tackle food waste in the UK. According to a progress report published in 2020, 261 organisations have committed to the roadmap, including 16 retailers, 162 producers/manufacturers and 35 hospitality and food service businesses. WRAP estimates that these organisations are likely to generate around 1.2 million tonnes of waste in their operations each year. In 2019, 45 businesses reported a total waste reduction of 17% (180,000 tonnes), equivalent to £300 million. By mid-2020, 171 organisations had provided evidence to WRAP that they were implementing the strategy of ‘Target, Measure, Act’. The Food and Drink Federation, which represents over 800 food and drink companies across the UK, has said that over 35 of its members have signed up to the roadmap and, of those, 34 have provided evidence that they have implemented ‘Target, Measure, Act’. The National Farmers’ Union welcomed progress against the roadmap, and said the farming sector had also taken steps to address food waste, such as improving agronomic and breeding techniques, investing in new harvesting and processing technologies and finding new markets for crops that do not meet supermarket specifications.

FareShare

FareShare is the UK’s largest organisation that redistributes surplus food to charities and community groups, that then produce meals for vulnerable people. Its latest annual report for financial year 2019/20 outlined that the organisation supported 10,962 charities during the year, with 933,178 people accessing food provided by FareShare each week. The organisation managed 26,329 tonnes of food in 2019 to 2020, an increase of 26% from the previous year, which provided enough food to make the equivalent of 57 million meals, an increase of 23% from the previous year. However, FareShare stated that their output represents only 1% of the 2.25 million tonnes of good-to-eat surplus food wasted in the UK each year.

This article contains Parliamentary information licensed under the **Open Parliament Licence v3.0**.

Ref: <https://lordslibrary.parliament.uk/food-waste-in-the-uk/>



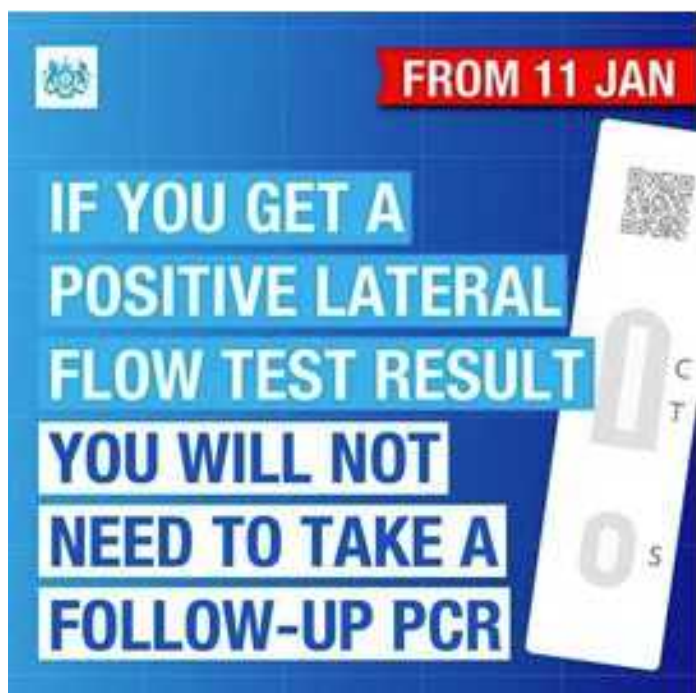
ReNew

CARPET & UPHOLSTERY CLEANING

<ul style="list-style-type: none"> ● High Powered Portable Equipment ● Commercial and Domestic Services ● Stain Removal/Reduction ● Satisfaction Guaranteed 	<ul style="list-style-type: none"> ● Dry in hours NOT days ● "One Off" or Regular Cleans ● Fully Insured & experienced operators
---	---

Please Call Mob: **0755 000 2242**
Tel: **0177 770 2779**

Milton Keynes, Cambridge, Maidstone, Canterbury Sales Offices etc - prices from £30



From 11th January 2022, people who receive positive lateral flow test results for coronavirus will be required to self-isolate immediately and do not need to take a confirmatory PCR test.

This is a temporary measure while Covid-19 rates remain high across the UK.

Anyone who develops one of the three main Covid-19 symptoms (a high temperature, loss in taste or sense of smell or a persistent cough) should stay at home and self-isolate and take a PCR test.

They must self-isolate straight away if they get a positive test result, even if they have had a recent negative lateral flow test – these rules have not changed.

However you choose to join in, we look forward to celebrating with you this year and strengthening our role in making communities even better. Warmest wishes for the year ahead.

**John Hayward-Cripps,
CEO, Neighbourhood Watch Network**

Editor's footnote: To read John's full Newsletter click on the above logo on our community website's homepage: (www.clarborough-welham.org.uk)



Some auto crimes are being reported across adjoining beat areas, and historically across this one, which could be prevented by adopting basic security measures around vehicles.

Vehicles are still being left insecure overnight and, in a lot of cases, items, which are attractive to criminals, are being left inside on full view to the same

There are criminals out and about who randomly visit villages in order to check on vehicle insecurities. They will try door handles of vehicles of vehicles parked on the public highway or on private driveways.

Some vehicles, particularly in the colder weather, are being left with the keys in the ignition and the engine running. These instances might only be occurring for very short periods of time, such as when visiting the local shop or, indeed, when collecting the vehicle from a garaged area. Criminals only need a very short period of time to steal vehicles when opportunities such as these arise. Some criminals will monitor individuals' movements and habits before targeting their vehicles. Please do not be caught out as the consequences could be a long and stressful claim to the insurance company who may not honour the same due to the circumstances

PCSO 8139 Dave Airey

Neighbourhood Watch celebrates its fortieth birthday in 2022 !



As you know, this year it is 40 years since the first Neighbourhood Watch group was formed in the UK in Cheshire in 1982. We have since grown to be the largest crime prevention charity in the UK. We will be celebrating this incredible achievement in a variety of ways throughout the year, and we'd love you to get involved.

To kick-start our celebrations we have launched a special 40th anniversary logo, which you can see above.

Throughout the year we will be focusing on: recognising and cheering our volunteers, and ensuring inclusion, representation and diversity throughout the organisation to help ensure Neighbourhood Watch has another great 40 years ahead.

Neighbourhood Watch Week (30th May - 5th June) this year will have the theme of **40 Years - 40 Actions** to encourage groups to engage with their communities through a mix of small and big actions. The week falls over the same weekend as the Queen's Platinum Jubilee and a **Big Lunch** (see page 24) provides the perfect opportunity to get-together safely with your neighbours outdoors with a street party.

Origin of the phrase 'Full of beans'

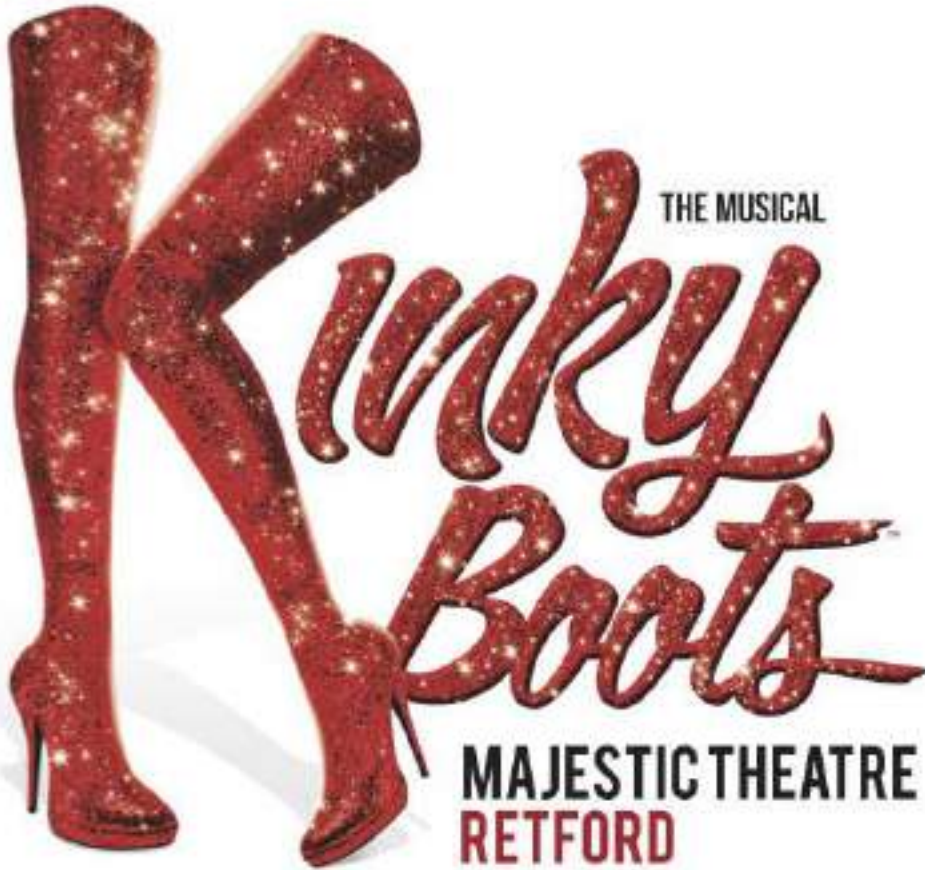
To be *full of beans* means to have a lot of energy, to be lively and enthusiastic, to have *joie de vivre*. Synonyms of the phrase *full of beans* that may be found in a thesaurus are hyperactive, spirited, animated. The phrase *full of beans* seems to have come into popular use in the mid-1800s and is attributed to a practice of feeding beans to horses as fodder. Supposedly, horses that were fed beans were more energetic and lively. Beans were a staple in the diet of many Americans in the mid-1800s. More recently, the phrase *full of beans* is sometimes used to mean not truthful, but this is not the general use of the idiom in the UK.

Editor

We don't stop playing because we grow old; we grow old because we stop playing.
George Bernard Shaw (1856-1950)



4TH-7TH MAY 2022



Book by **HARVEY FIERSTEIN** | Music and Lyrics by **CYNDI LAUPER**
 Original Broadway Production Directed and Choreographed by **Jerry Mitchell**
 Based on the Miramax motion picture Kinky Boots Written by **Geoff Deane** and **Tim Firth**
 This amateur production is presented by arrangement with Music Theatre International
 All authorised performance materials are also supplied by MTI www.mtishows.co.uk

TICKETS: FROM £17.50 | BOX OFFICE: 01777 706866

BOOKING AT WWW.MAJESTICRETFORD.ORG

Retford Musical Theatre Company is looking forward to bringing the fabulous musical, *Kinky Boots*. to the stage at the Majestic Theatre, Retford, in May.

If you fancy joining them either on stage, back stage or front of house get in touch at :

info@retfordmusicaltheatrecompany.org

Tickets on sale now from the Majestic Theatre.

Also, Coming soon!
 A 'Kinky' Fashion Show at Retford Town Hall to support Bassetlaw Hospice.

Save the date: Saturday 19th February 2022



Eight beavers are alive and well and settling into Idle Valley Nature Reserve after being released last November as the photo to the left proves!

These beavers, the largest number ever released at a site in England, are munching their way through scrub and felling small trees as part of the charity's long-term plans to enhance the wildlife value of more than 50 hectares at its largest site. Alongside the beavers, traditional breed cattle are making clearings and trampling vegetation to diversify the habitat for creatures from beetles & butterflies to birds. The beaver release is the highest profile element of a trail blazing partnership between Nottinghamshire Wildlife Trust

and Severn Trent, designed to boost the UK's Nature Recovery Network. The partnership is set to enhance the natural environment and improve water quality across more than 290ha of habitat at the reserve, in the wider Idle Valley and across Nottinghamshire through targeted support for farmers and landowners.

To read Erin McDaid's full press release go to our community website's **Local Environment ► Idle Valley**.

A green prescription for Python



The Chesterfield Canal Trust is delighted to announce that it has received a grant from the South Yorkshire and Bassetlaw Integrated Care System as part of its Green Prescribing programme.

The money has been awarded to buy life jackets so that the Trust can continue with its vegetation clearance and maintenance programme along the canal in the knowledge that its volunteers are safe.

Spending time in and connecting with nature is shown to improve people's mood, anxiety levels and physical health, and £400k national and local funding was made available to support local community organisations in Bassetlaw, Barnsley, Doncaster, Rotherham and Sheffield in improving people's mental and physical health through blue and green social prescribing.

For the last five years, the Chesterfield Canal Trust has used its work boat, Python, as the platform to help the Canal & River Trust to keep the canal safe and looking good for towpath users and boaters. Python is a venerable soul that was built in 1929. It was lovingly restored and refurbished by volunteers from the Trust. It is the ideal vessel for this type of work.



So far 38 volunteers have joined in with the work, some coming on several occasions. Jobs undertaken have included litter picking, cutting back overhanging vegetation, tidying up the sides of locks that had become overgrown, clearing bywashes and pulling objects out of the canal. Python boat manager, Dave Warsop, said: "We love the fantastic variety of people who volunteer to come and help on Python. They are of all ages, races and genders. Some are already very familiar with the canal; others are seeing it for the first time. The common factor is that invariably they leave tired but happy, full of tea & cake and promising to return."

Professor Des Breen, Medical Director for the South Yorkshire and Bassetlaw Integrated Care System, said: "Medicine is not always the best way to improve mental and physical health – green social prescribing supports people to engage in nature-based activities, connecting with the world around them, support groups and members

of their community and has been shown to help people with a range of mental and physical health concerns."

Cathy Slater, Head of Development at the Sheffield Wildlife Trust, said: "Spending time outside in nature is good for all of us and we're delighted that these grants will help more people access activities to connect them to nature and help improve their health and wellbeing through green social prescribing."

If you would like to be involved with Python's activities, please email .python@chesterfield-canal-trust.org.uk

UK Signs up for Super grids

Hidden among the headline-grabbing promises and blames following the recent COP26 climate summit in Glasgow was the *One Sun One World One Grid* initiative to which the UK and more than 80 other countries signed up.

The untapped potential of the sun is well known – all the energy humanity uses in a year is equal to the energy that reaches the earth from the sun in a single hour. The sun never sets – every hour, half the planet is bathed in sunshine. By trading energy from sun, wind and water across borders, we can deliver more than enough clean energy to meet the needs of everyone on earth. This trading is already beginning to happen through discrete bilateral and regional arrangements. But to meet the sheer scale of the challenge, these efforts need to be brought together and supplemented to create a more interconnected global grid. We call this vision: *One Sun One World One Grid*.

The Steering committee of The Green Grids Initiative comprises: Australia, France, India, United States of America and the United Kingdom.

This idea is to ultimately link together national and regional high voltage grid networks to form a global system. The idea of creating wider networks recognises that the likes of solar and wind energy can vary wildly in local systems such as the UK's but if we were linked to other networks in sunnier and windier regions those networks could boost our supplies just as theirs might benefit from our increasing numbers of wind farms.

Some aspects of this strategy are already in place; the UK recently started to import hydropower from Norway via a 725km subsea cable. In times of low demand (night for example) this could be used to export electricity generated by UK's increasing wind farm resource to Norway to pump water up into hydro-power reservoirs. This water would then be used to generate electricity for export back to UK during high-demand times – a sort of battery arrangement.

Multi-regional grids could also provide ecologically acceptable ways to generate power and then transfer it to areas of high population needs. One such proposal already in discussions is to generate solar power in northern Australia and connect cables via Darwin to Singapore – some 4,000+ kilometres to link a sparsely occupied generating area with a high demand urban centre.

Editor



Local gardens celebrate National Garden Scheme 2022 Snowdrop Festival

Sunday 6th February: 60 High Street, Sutton-on-Trent NG23 6QA 10:30-16:00.

Mature half-acre garden on site of Victorian flower nursery, now a series of well planted areas, each with its own character: over 400 snowdrop varieties in early spring for the galanthophiles. Dog friendly, refreshments, plants for sale.

Saturday 12th February: 1 Highfield Road, Nuthall, Nottingham. NG126 1BQ. 10:00-16:00.

Visit us in February to see our collection of 500+ snowdrop varieties, 280 in the garden and many others in show benches. Our spring garden has lots of colour with many rare and unusual plants, miniature narcissus, acers, aconites and magnolias. A good selection of unusual pots and garden ornaments. Plants for sale, refreshments.

Sunday 13th February: Church Farm, West Drayton, Retford. DN22 8EB. 10:30-16:00.

This garden is essentially a spring garden with a small woodland area which is carpeted with many snowdrops, aconites and cyclamen, which have seeded into the adjoining churchyard with approximately 180 named snowdrops growing in island beds, along with hellebores and daffodils. Visitors please bring your own refreshments to enjoy in the church adjoining Church Farm. Wheelchair access, dog friendly, plants for sale.



Bolham Manor, Bolham Way, Bolham, Retford. Contact pamandbutch@hotmail.co.uk or tel: 07790 896 022. Visit by arrangement, February to September:

This 3 acre mature garden provides year round interest. In February, 'Dancing' willow Ladies greet you amongst swathes of snowdrops, narcissus and early bulbs. Topiary features and sculptures guide you through the different parts of the garden with its well planted terraced and herbaceous borders, ponds and orchard. Visitors are welcome to bring their own refreshments and picnic. Partial wheelchair access and plants for sale.

Whoever wants to know something about me, they should look attentively at my pictures and there seek to recognise what I am and what I want.

Gustav Klimt (1862-1918) Austrian painter

Online Security Advice

Whether it's your Facebook, Amazon or Netflix account, the explosion in popularity of online apps and services means more and more of us need to create and use unique passwords.

Unfortunately, some of us cope with this challenge by resorting to practices that leave our data, devices and money at risk - by using the same password across multiple accounts, or by creating simple passwords that could easily be guessed by hackers. Bad password practice is more prevalent than you might think - the UK's National Cyber Security Centre carried out analysis of passwords leaked in data breaches and found that more than **23 million users worldwide used 123456 as a password!**

For maximum security, create strong, unique, passwords for every account you use – not the same one every time. Your editor creates passwords from any piece of written material on his desk but ensures that numbers, symbols, etc are included.

Also protect your computer or other devices with the latest updates and also install up-to-date security software. Finally, be very cautious of bank transfers. You won't get the same protection as you do with debit or credit card purchases.

For more of the government's latest advice on how to stay secure online, visit the Cyber Aware website: <https://www.ncsc.gov.uk/cyberaware>

Editor

OAKLEY FLOORING SOLUTIONS

Wall & Floor Tiling - Floor Preparation - Laminate Flooring
 Carpets & Vinyl Flooring - Granite Work Surfaces
 Floor & Wall Coverings - Bathroom Relabishment
 Wooden Flooring - Artificial Grass - Under Floor Heating

For Your Free, No Obligation Quote:
Call Us: 07805 695319

Spicy Red Cabbage

Ingredients

- 1 medium red cabbage
- 250cm³ Aldi Tomato & Chilli Salad Dressing
- 4 Shallots
- Tomato paste
- Large handful of mixed dried fruit
- A little concentrated orange juice.

Sufficient for 4-6 servings.

Preparation

- Peel and finely chop shallots, Place in a large bowl with tight-fitting lid.
- Remove most of white stalk/core from cabbage together with any dried or withered outer leaves.
- Finely chop the cabbage. Add to bowl.
- Pour dressing over cabbage followed by a good squeeze of tomato paste.
- Sprinkle dried fruit over cabbage. Mix thoroughly.
- Add a little orange juice until bowl contents are thorough moist but no standing liquid forms at bottom of bowl – pull cabbage aside with spoon to check this.
- Cover bowl tightly, place in fridge for about two hours.

Cooking

Spoon required amount of cabbage mix into a saucepan. Cover with tight fitting lid and warm thoroughly for about 10mins, stirring periodically. Serve with almost any hot or cold meal.

Editor

1921 Census is now published!

It is now confirmed that the 1921 Census for England and Wales is published online by Findmypast from **6th January 2022**. Basic subscription for Findmypast 1921 Census material will be £2.50 per transcript and £3.50 for every original record image. To find out more, visit: <https://www.findmypast.co.uk/1921-census>

Editor's footnote:

A bit of background for readers new to family history (*genealogy* to us geeks!). The first UK census took place in 1801, largely triggered by the need for government to have some idea of the potential size of army (and navy) it could create if it had to conscript some, or all, of the men of 'fighting age' with Napoleon Bonaparte seen as a potential foe.

From that date UK censuses were conducted every ten years, the first few simply counted heads, so to speak, just recording basic area information. It was the 1841 census that started to record individual's names and so it is from this date that census records really become important to genealogists.

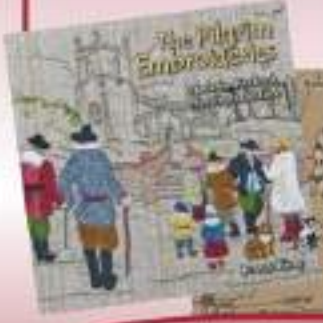


Readers may come across comments such as 'This will be the last census available until the 1951 census is published'. Why you may ask, what happened to the 1931 and 1941 censuses?

The answers are, a) the 1931 census records were completely destroyed in a 1942 fire, b) No census was taken in 1941 because of the Second World War.

Editor



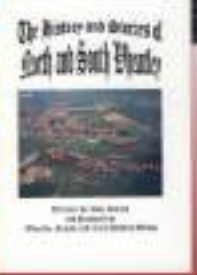

Bookworm Book Service

Free delivery within Bassetlaw
Phone 01777 869224
Browse local books on our website:
www.bookwormretford.co.uk

Out Now!
People & Places of Newark and Sherwood
£18

Many local books in stock



National Heritage Open Days 2022 is scheduled for 9th to 18th September with the theme "Astounding Inventions". Retford will be celebrating its own Heritage Day on **Saturday 10th September** so mark you diary! Retford Heritage Day also provides other delights – the chance to go on the canal in the Seth Ellis, ride on a Heritage bus, enjoy theatre groups, Morris and Clog dancing groups performing around town and take part in singing workshops with the Community Singers. We have also, for several years, taken up a national theme and had a stagecoach and a royal visit from Victoria and Albert.

To keep up to speed with national events, visit:
<https://www.heritageopendays.org.uk/>



Bassetlaw District Council has prepared the **Bassetlaw Local Plan 2020-2037: Publication Version Addendum**. The Local Plan sets out the broad spatial planning and policy framework for Bassetlaw District up to 2038. The *Local Plan Addendum* sets out proposed focussed changes relating to policies for biodiversity, transport infrastructure, renewable energy generation, infrastructure delivery, employment land provision and the housing delivery strategy, including for gypsy and travellers.

The Addendum should be read alongside the Bassetlaw Local Plan 2020-2037: Publication Version. It is intended that both will comprise the Publication Local Plan for Bassetlaw District. We are now into the **Period for submission of representations**.

Representations are invited on the *Bassetlaw Local Plan 2020-2037: Publication Version Addendum* and proposed submission documents for a period of six weeks, from **12:00 Thursday 6th January to 17:00 on Thursday 17th February 2022**. Representations received after this time will not be accepted.

To view the full document setting out how to make representations from which the above introduction is taken as well as the full Local Plan, go to your community website's homepage to read the full document. Copies are available at Council Offices and local libraries too. Clarborough & Welham community website:

Clarborough & Welham Parish Council News: at their January 10th 2022 Meeting our Parish Council decided to keep the precept unchanged which will mean a very slight (about 26p) reduction in the cost to every household.

Nottinghamshire school's half-term & Easter holidays

February half-term: 14th -18th February
Easter holiday: 4th -18th April
 School term dates are posted on Nottinghamshire's website through to July 2027 – wow!

The Big Jubilee Lunch in the special 2nd-5th June, 2022 Bank Holiday aims to invites communities across the UK to come together for a lunch as part of the official celebrations for HM The Queen's Platinum Jubilee!

A once in a lifetime event, this unique **Big Lunch** is set to be a cracker. Whether it's sharing a cuppa with a neighbour on the doorstep or a bigger bash in the street, join millions of people across the UK to share friendship, food and fun with The Big Jubilee Lunch. It's the party that's right up your street, and **everyone's invited**, so let's take to our streets, gardens and neighbourhoods to have fun and get to know one another a little better. Getting organised?

If you feel the urge to organise, go online for the free starter pack at:
<https://www.edenprojectcommunities.com/get-your-big-lunch-pack-0>

And, finally, mark your diary for Retford's 2022 Christmas Market and Lights Switch-on; Sunday 27th November!

Newsletter 2022 editorial deadlines
25th April, 2022 (Summer issue)
1st August, 2022 (Autumn issue)

Clarborough & Welham Parish Council Meetings

21st February, 2022
4th April, 2022
16th May, 2022

Meetings open 19:00 in Clarborough Village Hall

Agendas are always posted at least a week in advance on notice boards and on our community website where you will also find approved Minutes and meeting dates through to January, 2023.

Newsletter Advertising rates for a whole year of four consecutive issues

Full page	£125.00
Half page	£75.00
Quarter page	£45.00
This size	£25.00

Contact Greg (01777) 700 918

Special rates for 'one off' insertions
 Yet again, our greatest thanks go to our tireless (!) team of volunteer distributors.