

Get in touch

To refer a young person for an Independent Visitor please contact us via your local service.

Nottingham Independent Visitors

T: 07435925216

E: Michelle.Brown2@cgl.org.uk

www.changegrowlive.org/young-people

 facebook.com/changegrowlive

 [@changegrowlive](https://twitter.com/changegrowlive)



We're part of

**Change
Grow
Live**

Change Grow Live Registered Office: 3rd Floor,
Tower Point, 44 North Road, Brighton BN1 1YR.
Registered Charity Number 1079327 (England
and Wales) and SC039861 (Scotland). Company
Registration Number 3861209 (England and Wales).

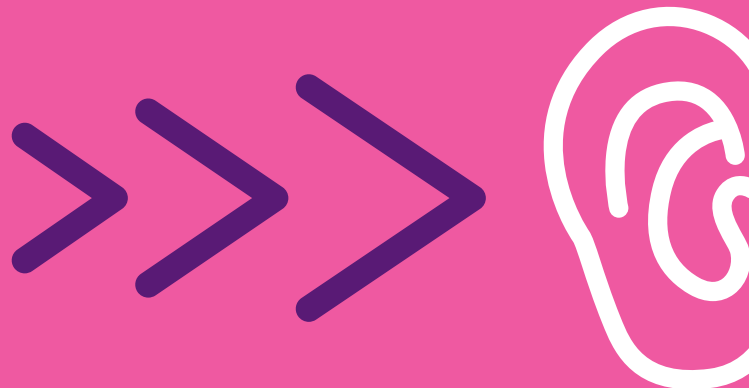


Change
Grow
Live

Independent
Visitor Service

Nottingham

Information and advice for carers and professionals



We recruit, train and support Independent Visitors to provide one-to-one support and consistency to a young person who is looked after.

I just wanted the volunteer to know what a fab job she is doing as an Independent Visitor. I hear nothing but positive comments from her young person.

Who are Independent Visitors?

Independent Visitors are adults who give back some of their free time to support young people who live with foster family or in residential care. They are there to be on the young person's side, separate from social services. They usually visit 2-4 hours a month.

Our Independent Visitors are people who want to support young people who live in the local area. Our volunteers are of all ages and from all backgrounds. They are DBS checked and fully trained.

How can I support my young person with an Independent Visitor?

Whilst referrals need to come from social workers, you can contact project staff with the details, and they will liaise with the social worker to see if an Independent Visitor would be appropriate for the young person.

When a young person in your care is already matched with an independent visitor, you can help them out by arranging the next visit as soon as possible after each visit.