



## **Bolsover Community Voices Forum held 22<sup>nd</sup> August 2022 Doe Lea Centre - Notes from event**

Unfortunately Andria Birch, who intended to join us, was called away to an emergency on the way to the meeting so regreably could not attend.

1. Lucy introduced the event and drew everyone's attention to the new branding of Bolsover CVS (as seen throughout this document) and outlined staff roles and changes, introducing Steve Morris on his first day as the new Head of Bolsover CVS Development.
2. Lucy then gave a short presentation outlining the health topics we at Bolosver CVS work on, as well as supporting group development, volunteering and representation.
  - Bolsover Partnership's Health & Well Being Forum – this is also attended by some of those who attend this Forum, providing information about public health issues which could benefit service users, so individuals as well as groups.
  - Covid messaging – weekly bulletins we sent out throughout the pandemic to try to help inform, recently adapted to coninue fortnightly with general health alerts.
  - Home Instead of Hospital (revised from Home From Hospital) – along with other CVSs throughout Derbyshire the service offers support through volunteers to avert hospital admissions and fill a gap when discharged patients are lacking in available support once sent home.
  - We Are Undefeatable – in partnerhsip with the National Lottery and Sport England this national initiative is to find ways of supporting and inspiring people with long term health conditions to be active. Specific pilot work in Shirebrook is currently being evaluated with a report about this due to be circulated shortly.
  - Connect Bolsover/ social connectedness – funded through DCC's Public Health, looking at ways tackle loneliness and isolation. Examples of work done include the "well for winter" information leaflets circulated and the digital inclusion survey work which resulted in Bolsover DC finding funding to pay for a worker to deliver support to individuals throughout the district.
  - Bolsover Children & Young People's Mental Health & Emotional Well Being network – a Forum we facilitated to bring together professionals and youth involving groups to benefit young people. Although always difficult to get voluntary led groups to come together during the working

The Old Abbey School, Priorswell Road  
Worksop, Nottinghamshire, S80 2BU  
01909 476 118 | [bcvs@bcvs.org.uk](mailto:bcvs@bcvs.org.uk)





day, several groups wanted access to minutes to keep updated about support available.

- NE Derbyshire & Bolsover Locality Partnership / Place Alliance Physical Activity Group – we feed into this DCC Public Health Forum joining up the work of statutory bodies and professionals in the two districts with the aim of encouraging people in the area to become more active through various initiatives.
3. Steve Morris then outlined information in Andria's presentation, starting with introducing himself, and staff updates;
- Lucy Curtis and the new VCSE Group Development Officer (tbc) will continue to grow and support VCSE Groups and Partnerships to develop at every stage.
  - Annie Parry and Amy Tipping (also her first week, Home not Hospital Co-ordinator) will continue to support and connect people and volunteers with the right VCSE groups to meet their needs.
  - Steve and Andria will continue to listen and share the voices of groups and all people connected with them, to influence and shape policy, funding, services and communities.

Steve spoke about the position with different funding bodies and BCV's strategy, to clarify our role and objectives for the next three years, as below and promoted an important event we are facilitating in October, as follows;



The Old Abbey School, Priorswell Road  
Worksop, Nottinghamshire, S80 2BU  
01909 476 118 | [bcvs@bcvs.org.uk](mailto:bcvs@bcvs.org.uk)

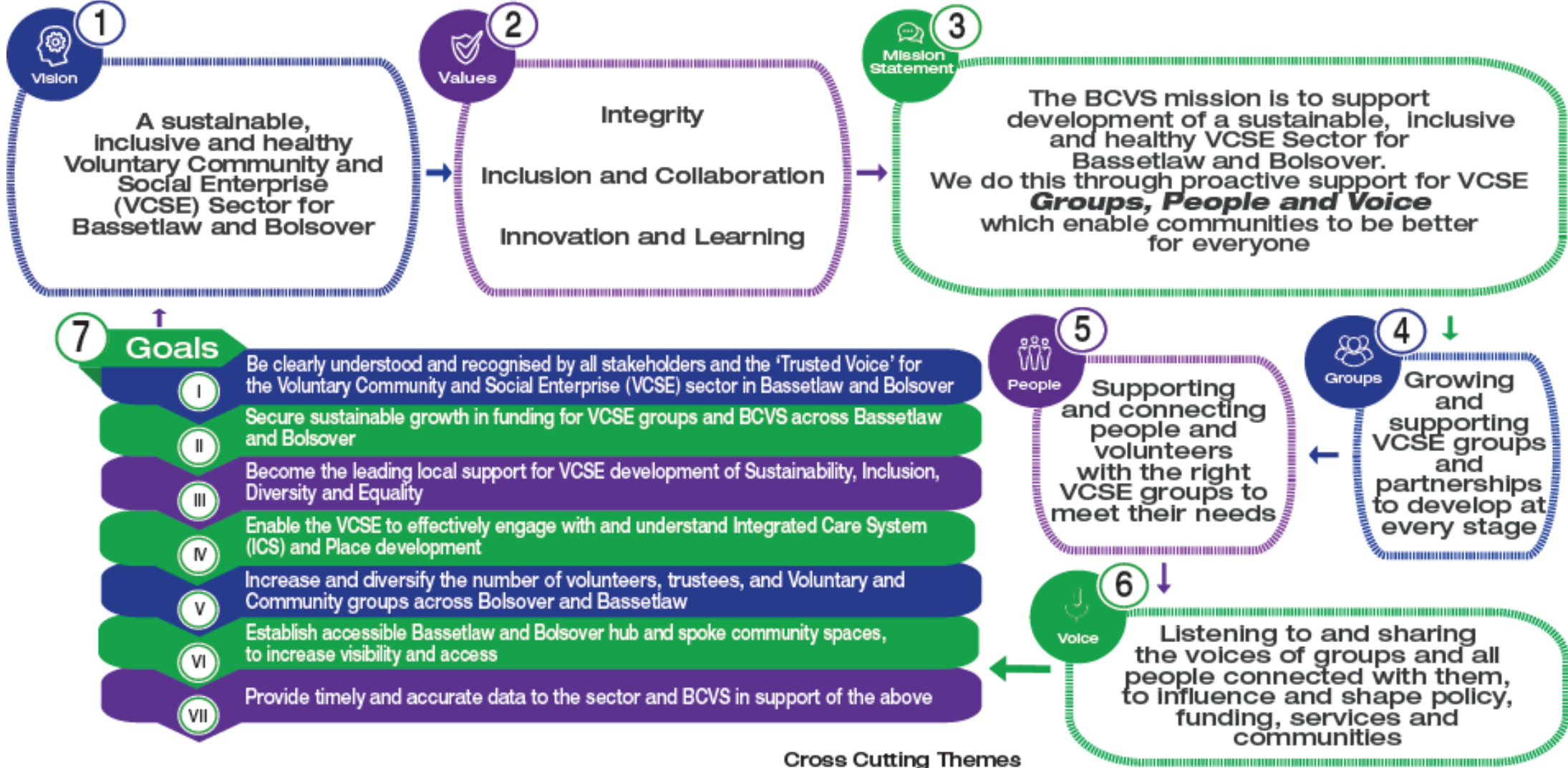
# BCVS BCVS

Bassetlaw Community and Voluntary Service

Bolsover Community and Voluntary Service

## Strategy 2022 - 2025

#WorkingTogether



### Cross Cutting Themes

- Sustainability
- Inclusion Diversity Equality
- Health and Wellbeing



[www.bcvs.org.uk](http://www.bcvs.org.uk)  
01909 476 118 | [bcvs@bcvs.org.uk](mailto:bcvs@bcvs.org.uk)  
Charity Number - 1140782 | Company Number - 07232206



## Funders

### ICS Integrated Care System Development & VCSE Alliance work

Joined Up Care Derbyshire, Derby and Derbyshire's Integrated Care System (ICS) is an NHS partnership that brings together providers (those who deliver services) and commissioners (those who plan and buy services) with other local partners to collectively plan health and care services to meet the needs of the local population. The central aim of an ICS is to join up care across different organisations and settings to provide people with more convenient and personalised care for their health and wellbeing. This marks the end of what were previously known as CCGs (Clinical Commissioning Groups). As the implications of what these changes mean becomes apparent, we will keep you posted. If you would like to join the VCSE Alliance, a groups of infrastructure support organisations across the County, please get in touch with Andria by email [andria.birch@bcvs.org.uk](mailto:andria.birch@bcvs.org.uk) and she will make introductions.

An article about this and links to further related documents is being included each week in our newsletter, and can be found on our website through the following link - [Derby and Derbyshire ICS | Bassetlaw CVS \(bcvs.org.uk\)](#)

### Shared Prosperity Fund

The UK Shared Prosperity Fund (UKSPF) is a new three-year UK fund running from 2022/23 that will replace European Structural and Investment Funds (ESIF) such as the European Regional Development Fund (ERDF) and the European Social Fund (ESF). These funds have supported a range of job creation, innovation and skills programmes. Bolsover District's allocation is £1.9M but this will still be less than was available through previous European funding.

This fund is at the investment planning stage, meaning that the Council has been working on pulling together development plans which had to be submitted to Government by the 1<sup>st</sup> August. Collaborating with VCSE groups will take place under one of the three strands headed "Community and Place". Funding will cover the period 1<sup>st</sup> April 2022 to 31<sup>st</sup> March 2025 and funding will be made available once each local authority's investment plan has been signed off, and an announcement about this is expected mid-October 2022.

### Levelling Up

A bid for £14.2M has been submitted by Bolsover District Council to the Government's Levelling Up Fund to regenerate Bolsover Town Centre. The town has been categorised as "priority 2" by central government, having not been successful in it's bid for Town's funding in the first phase. The money can be used for regeneration, to upgrade rail links and to bring improvements to cultural and heritage projects. Bolsover District Council and Old Bolsover Town Council have pledged to contribute a further £1.3M between them, meaning that if the bid is successful £15.48M can be spent on improvements. Such work could include

The Old Abbey School, Priorswell Road  
Worksop, Nottinghamshire, S80 2BU  
01909 476 118 | [bcvs@bcvs.org.uk](mailto:bcvs@bcvs.org.uk)





the purchase and making better use of the old Co-op site and other empty buildings in Bolsover's town centre. Announcements about where bids have been successful are to be made from mid-September.

### **Know Your Neighbourhood funding**

[Know Your Neighbourhood \(KYN\) Fund: Intermediary Grant Maker Competition Application Guidance - GOV.UK \(www.gov.uk\)](https://www.gov.uk/guidance/know-your-neighbourhood-fund)

Within this guidance it says "KYN Fund will commence from December 2022 and end by 31 March 2025. The deadline for applications is 10am on Thursday 29th September 2022".

### **A Partnership Conference is to be facilitated by BCVS**

The aim of the event on the **17<sup>th</sup> October 10-3pm at the Post Mill Centre** is to

1. Help VCSE groups to attract new funding and a fair share of funding for Bolsover District, so enabling local VCSE groups to be able to scale up and extend the support they provide to local people.
2. Build the capacity of those organisations who are not yet ready to be funded providers to the standards required by various large public sector and grant funding programmes.
3. Provide BCVS support in consortia formation and development of larger bids where no appropriate VCSE lead organisation based in Bolsover District is identified. Such organisations would need to have the capacity to lead and manage programmes.
4. Work with commissioners to amplify the voice of service users and build upon what works to shape system development and improve outcomes.

The ultimate aims are to be able to develop a consortium and BCVS framework to enable funding to be applied for in both Bolsover and Bassetlaw, ensure all eligibility requirements are met and all groups involved are "tender ready" as opportunities arise.



The Old Abbey School, Priorswell Road  
Worksop, Nottinghamshire, S80 2BU  
01909 476 118 | [bcvs@bcvs.org.uk](mailto:bcvs@bcvs.org.uk)





5. Phil De St Croix of the Alzheimer's Society then spoke of their work. He outlined pre-diagnosis of Alzheimer's for those experiencing memory loss, support for young carers and working carers, families affected and those who have memory loss through other factors such as addiction.

Phil showed a short video to illustrate this work and referred to their newly updated (watch this space) website; [Alzheimer's Society \(alzheimers.org.uk\)](http://Alzheimer's Society (alzheimers.org.uk))

6. Attending – those including their emails were happy to share them, with an outline of news/updates from each organisation;

Miriam Ibbotson – Limestone House/ Creswell Model Village [uniteangel@gmail.com](mailto:uniteangel@gmail.com)

Miriam kindly took minutes for the meeting, and set the scene for the groups she supports; mainly at the moment being Limestone House (which is still operating a food bank), Creswell Model Village (Creswell Gala is coming up, groups to bear in mind). Miriam reminded the group about the problems with public transport around the district, coupled with expense of community transport, which was discussed. The idea of a co-operative community bus service was introduced.

Ann Monk – Brightlife (formerly Age concern) [co@ageconcernchesterfield.co.uk](mailto:co@ageconcernchesterfield.co.uk)

Continue to provide a telephone befriending service to local residents in Chesterfield, NE Derbys and Bolsover Districts. Hope to expand but looking for more volunteers.

Emma Field – Freedom Project [info@freedom.charity](mailto:info@freedom.charity)

Food bank, housing, welfare rights, help younger people who are out of work, working with those with learning difficulties. Hoping to open a food pantry shortly but issues with their supplier, Fairshare.

Karen Sansom (Wellbeing Officer) – Bolsover Woodlands Enterprise [karen.s@bolsoverwoodlands.org](mailto:karen.s@bolsoverwoodlands.org)

Providing training, support and education for those with learning difficulties, through voluntary experiences.

Julie Baddams – Bolsover North SLPW [julie.baddams1@nhs.net](mailto:julie.baddams1@nhs.net) tel: 07736 016063

Continuing to support referrals from surgeries into social prescribing. Julie advised the group about the imminent role-out of the latest Covid vaccine, combining different suppliers in one 'jab'



The Old Abbey School, Priorswell Road  
Worksop, Nottinghamshire, S80 2BU  
01909 476 118 | [bcvs@bcvs.org.uk](mailto:bcvs@bcvs.org.uk)



Zoe Presland – South Normanton Community Church [pastor@sncc.uk.com](mailto:pastor@sncc.uk.com)

Zoe advised the group of the pastoral work of the Church, though they currently do not own their own premise. Currently based within the Post Mill Centre.

Nathan Culkin – Lloyd’s Bank Foundation [bolsover@LBFEWcommunities.org.uk](mailto:bolsover@LBFEWcommunities.org.uk) Unfortunately had to leave early.

- Facilitating the work of Lloyd’s Foundation to find ways to improve the situation for collaboration between third sector organisations in Bolsover District.

Paul Davies – Clowne Enterprise – [paul@clowne-enterprise.org.uk](mailto:paul@clowne-enterprise.org.uk)

Paul promoted the self-confidence building course “Equipped to Succeed” being run in Chesterfield from 15 September 2022. Anyone in the Bolsover area can attend, they would just have to make their own way there. This consists of 2.5 hours per week for 8 weeks; a free course to help people recover from pandemic/ gave confidence in life after whatever setbacks they have experience, and move forward with skills and confidence. Leaflets were handed out.

Danielle Hancock – SAIL (Sexual Abuse & Incest Line) support group, based in Chesterfield [Danielle.hancock@sailderbyshire.org.uk](mailto:Danielle.hancock@sailderbyshire.org.uk)  
– supporting people suffering sexual violence, victims of sexual abuse, domestic violence, providing counselling and support, help through reporting incidents to through court cases etc. Can also help with benefits and housing and sign post where relevant. Will let the group know if doing any fund raising or open days in case people wish to help or get involved.

Rich Fern – Manager at the Doe Lea Centre [richfern@doelea.org.uk](mailto:richfern@doelea.org.uk)

talking about the variety of groups they run at the centre; anyone can get involved from the local and surrounding communities.

Phil de St Croix – Derbyshire Alzheimer’s Society [phil.destcroix@alzheimers.org.uk](mailto:phil.destcroix@alzheimers.org.uk)

Beverly Taylor – Derbyshire Alzheimer’s Society [beverly.taylor@alzheimers.org.uk](mailto:beverly.taylor@alzheimers.org.uk)

Steve Morris – Head of Bolsover CVS Development [steve.morris@bcvs.org.uk](mailto:steve.morris@bcvs.org.uk)

Annie Parry – Volunteer Development, BCVS [involve@bcvs.org.uk](mailto:involve@bcvs.org.uk)

Jak Hall - Bolsover Community and Voluntary Sector Engagement Trainee [jak.hall@bcvs.org.uk](mailto:jak.hall@bcvs.org.uk)

Jayden Scott – Bolsover Community and Voluntary Sector Engagement Trainee [Jayden.scott@bcvs.org.uk](mailto:Jayden.scott@bcvs.org.uk)

Lucy Curtis – VCSE Development Officer [lucy.curtis@bcvs.org.uk](mailto:lucy.curtis@bcvs.org.uk)



The Old Abbey School, Priorswell Road  
Worksop, Nottinghamshire, S80 2BU  
01909 476 118 | [bcvs@bcvs.org.uk](mailto:bcvs@bcvs.org.uk)





### Apologies

Janet Smith – Langwith Society  
Tina Eltringham – DCC youth & com dev worker  
Julie Gregory – Hillstown Village Hall  
Paul Stears – Release Financial Charity  
Sarah Smith – Old Bolsover Yard  
Ian Maddison – BLAST (Shirebrook)  
Richard Holland – Volunteer at Barlborough Country Park  
Helen Cashin – National Trust Volunteering Officer  
Andy Heath – Bolsover Countryside Partnership Manager  
Amanda Pell – The Brook, Shirebrook  
Jess Holmes – Area 51 Martial Arts & tricking Academy  
Lauren Rathbone – Best Food Forward, School of Artisan Food  
Chloe Harrington – SPLW Adult Social Care DCC  
Rachel Goldthorpe – Vicar at Bolsover Church  
Joanne Frost – Derbyshire Community Transport  
Stephen Knox – Hillcote Environmental Community Group  
Rachel Hibbert – Glapwell Community Development Group

Lucy asked the group if anyone had any comments about the minutes of the previous meeting or matters arising, and as none were forthcoming and no comments had been received prior to the event, they were agreed as a correct record. It was agreed that these meetings and minutes do not need to be as formal as some are.

The date of the next Forum as the 13<sup>th</sup> October may now have to be rearranged due to the proposed conference arranged for the 17<sup>th</sup> October at the Post Mill Centre, discussed previously in these minutes.



The Old Abbey School, Priorswell Road  
Worksop, Nottinghamshire, S80 2BU  
01909 476 118 | [bcvs@bcvs.org.uk](mailto:bcvs@bcvs.org.uk)