

Love learning locally

East
Derbyshire

Derbyshire Adult Community Learning

January to April 2023
Courses

**Book
Now**

INSCRIBE PASTELS 64 COLO

Booking, Payment and Fees

How to book and pay

Booking and payment for all our Community Learning courses is via our Eventbrite page derbyshireadulteducation.eventbrite.com*

Help with online booking

If you struggle with online booking and payment we are here to help. Drop in to your local centre or give them a call. Centre contact details are on the back page. If you get the answer machine leave a message with your name and contact details and someone will call you back.

Course fees explained

Many of our 'Community Learning' courses have three different fee bands:

- Fee A: Full fee
- Fee B: Derbyshire Gold Card holders
- Fee C: Concessions for those on certain benefits/ allowances

For more details on course fees and concessions visit www.derbyshire.gov.uk/coursefees or ask in your local centre.

Some courses may also have additional materials costs as indicated in the course listings. See course information on our Community Learning pages and Eventbrite for details.

Cancellations

If you need to cancel your place on a course you have booked on to, you can do it yourself on Eventbrite, contact the organising centre or email adult.education@derbyshire.gov.uk.

Please note that if you cancel your place on a course which has fees, the percentage of the fee that covers the Eventbrite costs is non-refundable (approximately 6%).

If for any reason we have to cancel a course, the full fee is refundable. If we have to change a centre-based course to an online course (for safety reasons) and you wish to cancel your place, the full fee is refundable.

* Except for courses that say to contact centre. We can help you with online booking if you need it.

Welcome to our Spring Programme

This brochure contains our Community Learning courses in Alfreton, Bolsover, Chesterfield, Clay Cross and Shirebrook from January to Easter 2023. It includes details of our centre-based and outdoor courses and provides information on where to find out more about our online courses.

To find out more and book on a course simply go to www.derbyshire.gov.uk/coursesearch and click on **Community Learning** to search for a course. Simply scroll down the page to look for courses at a particular venue or use the menu on the left to search for courses by subject.

Here you will find further information about the course and a link to its Eventbrite page for full details and booking. See the back page for where to get help if you struggle with getting online.



Alfreton

Alfreton ACE Centre, Church Street,
Alfreton, DE55 7BD

The Alfreton team can be contacted on alfreton.ace@derbyshire.gov.uk or 01629 533090 for any additional information you require about Alfreton courses, or for help with online booking. The office is usually open on Monday to Thursday during normal office hours.

For further information on any of the courses listed below and to book visit www.derbyshire.gov.uk/communitylearning

Scan the QR code to book



Course Title	Wks	Day, Date and Time	Fee A	Fee B	Fee C
Enterprise Pottery under 25s	5	Monday 09 January to Monday 06 February, 10am to 12.30pm	FREE	FREE	FREE
Pottery for All £	5	Monday 09 January to Monday 06 February, 1pm to 3pm	£76	£70	£38
Pottery for Beginners £	5	Tuesday 10 January to Tuesday 07 February, 11.30am to 1.30pm	£54	£47	£17
Cooking with Confidence £	5	Thursday 12 January to Thursday 09 February, 1pm to 3pm	£53	£47	£17
Lip Reading All Abilities	7	Thursday 12 January to Thursday 02 March, 9.30am to 11.30am	FREE	FREE	FREE
Tai Chi for Health	5	Thursday 12 January to Thursday 09 February, 10.30am to 12noon	£49	£43	£15
Enterprise Pottery under 25s	5	Monday 27 February to Monday 27 March, 10am to 12.30pm	£76	£70	£38
Pottery for All £	5	Monday 27 February to Monday 27 March, 1pm to 3.30pm	£76	£70	£38
Pottery for Beginners £	5	Tuesday 28 February to Tuesday 28 March, 11.30am to 1.30pm	£54	£47	£17
Cooking with Confidence £	5	Thursday 02 March to Thursday 30 March, 1pm to 3pm	£53	£47	£17

£ These courses have additional materials costs. See course information on our website and Eventbrite for details

Bolsover

Bolsover ACE Centre, Castle Street, Bolsover S44 6PP

The Bolsover team can be contacted on

bolsover.ace@derbyshire.gov.uk or 01629 537912 for any

additional information you require about Bolsover courses,

or for help with online booking. The office is usually open on

Monday, Wednesday and Thursday during normal office hours.

For further information on any of the courses listed below and to book visit www.derbyshire.gov.uk/communitylearning

Scan the QR code to book



Course Title	Wks	Day, Date and Time	Fee A	Fee B	Fee C
Family Learning – Half term crafts	1	Wednesday 22 February, 1pm to 3pm	FREE	FREE	FREE
Floristry – Eco Friendly Flower Designs	6	Monday 09 January to Monday 13 February, 12.30pm to 2.30pm	£64	£57	£20
Sewing Crafts for Pleasure and Wellbeing	6	Monday 09 January to Monday 13 February, 9.45am to 11.45am	£64	£57	£20
Crafts – Learn to Crochet	6	Monday 09 January to Monday 13 February, 12.30pm to 2.30pm	£64	£57	£20
Brightside – Cooking on a Budget	6	Monday 09 January to Monday 13 February, 1pm to 3pm	FREE	FREE	FREE
Help for Hearing Loss – Lip Reading and Signed Communication (continuation)	6	Wednesday 11 January to Wednesday 15 February, 5.45pm to 7.45pm	FREE	FREE	FREE
Fitness – Yoga for Wellbeing	6	Wednesday 11 January to Wednesday 15 February, 6.30pm to 8pm	£49	£43	£15
Sewing Crafts for Pleasure and Wellbeing	6	Wednesday 11 January to Wednesday 15 February, 6.30pm to 8.30pm	£64	£57	£20
Brightside – Introduction to Digital Photography	6	Wednesday 11 January to Wednesday 15 February, 1pm to 3pm	FREE	FREE	FREE
Sewing Crafts for Pleasure and Wellbeing	6	Thursday 12 January to Thursday 16 February, 9.45am to 11.45am	£64	£57	£20

Course Title	Wks	Day, Date and Time	Fee A	Fee B	Fee C
Sewing Crafts – Rags to bags £	6	Thursday 12 January to Thursday 16 February, 12.45pm to 2.45pm	FREE	FREE	FREE
Floristry – Spring Flower Arrangements	5	Monday 27 February to Monday 27 March, 12.30pm to 2.30pm	£53	£47	£17
Sewing Crafts for Pleasure and Wellbeing	5	Monday 27 February to Monday 27 March, 9.45am to 11.45am	£53	£47	£17
Crafts – Learn to Crochet	5	Monday 27 February to Monday 27 March, 12.30pm to 2.30pm	£53	£47	£17
Brightside – Cooking on a Budget	6	Monday 27 February to Monday 03 April, 1pm to 3pm	FREE	FREE	FREE
Help for Hearing Loss – Lip Reading and Signed Communication (continuation)	5	Wednesday 01 March to Wednesday 29 March, 5.45pm to 7.45pm	FREE	FREE	FREE
Fitness – Yoga for Wellbeing	5	Wednesday 01 March to Wednesday 29 March, 6.30pm to 8pm	£40	£36	£12
Sewing Crafts for Pleasure and Wellbeing	5	Wednesday 01 March to Wednesday 29 March, 6.30pm to 8.30pm	£53	£47	£17
Sewing Crafts for Pleasure and Wellbeing	5	Thursday 02 March to Thursday 30 March, 9.45am to 11.45am	£53	£47	£17
Sewing Crafts – Rags to bags £	5	Thursday 02 March to Thursday 30 March, 12.45pm to 2.45pm	FREE	FREE	FREE
Family Learning – Easter crafts	1	Wednesday 05 April, 1pm to 3pm	FREE	FREE	FREE

£ These courses have additional materials costs. See course information on our website and Eventbrite for details

Chesterfield

Hunloke ACE Centre, Church Street South,
Chesterfield S40 2TF

The Hunloke team can be contacted on

hunloke.ace@derbyshire.gov.uk or **01629 535002** for

any additional information you require about Chesterfield courses, or for help with online booking. The office is usually open Monday to Friday during normal office hours.

For further information on any of the courses listed below and to book visit www.derbyshire.gov.uk/communitylearning

Scan the QR code to book



Course Title	Wks	Day, Date and Time	Fee A	Fee B	Fee C
Sewing Crafts – Patchwork and Quilting	6	Monday 09 January to Monday 13 February, 10am to 12noon	£64	£57	£20
Help for Hearing Loss – Lip Reading and Signed Communication (Continuation)	6	Monday 09 January to Monday 13 February, 12.30pm to 2.30pm	FREE	FREE	FREE
Floristry – Eco Friendly Flower Designs	6	Monday 09 January to Monday 13 February, 9.30am to 11.30am	£64	£57	£20
Crafts – Creative Textiles	6	Tuesday 10 January to Tuesday 14 February, 1pm to 3pm	£64	£57	£20
Art – Painting and Drawing for Wellbeing	6	Tuesday 10 January to Tuesday 14 February, 10am to 12noon	£64	£57	£20
Art – Painting and Drawing for Wellbeing	6	Tuesday 10 January to Tuesday 14 February, 1pm to 3pm	£64	£57	£20
Fitness – Yoga for Positivity	6	Thursday 12 January to Thursday 16 February, 6.30pm to 8pm	£49	£43	£15
Crafts – Creative Textiles	6	Friday 13 January to Friday 17 February, 10am to 12noon	£64	£57	£20
Crafts – Creative Textiles	6	Friday 13 January to Friday 17 February, 1pm to 3pm	£64	£57	£20
Art – Painting and Drawing for Wellbeing	6	Friday 13 January to Friday 17 February, 10am to 12noon	£64	£57	£20
Sewing Crafts – Patchwork and Quilting	5	Monday 27 February to Monday 27 March, 10am to 12noon	£64	£57	£20

Course Title	Wks	Day, Date and Time	Fee A	Fee B	Fee C
Help for Hearing Loss – Lip Reading and Signed Communication (Continuation)	5	Monday 27 February to Monday 27 March, 12.30pm to 2.30pm	FREE	FREE	FREE
Floristry – Spring Flower Arrangements	5	Monday 27 February to Monday 27 March, 9.30am to 11.30am	£53	£47	£17
Crafts – Creative Textiles	5	Tuesday 28 February to Tuesday 28 March, 1pm to 3pm	£53	£47	£17
Art – Painting and Drawing for Wellbeing	5	Tuesday 28 February to Tuesday 28 March, 10am to 12noon	£53	£47	£17
Art – Painting and Drawing for Wellbeing	5	Tuesday 28 February to Tuesday 28 March, 1pm to 3pm	£53	£47	£17
Fitness – Yoga for Positivity	5	Thursday 02 March to Thursday 30 March, 6.30pm to 8pm	£40	£36	£12
Crafts – Creative Textiles	5	Friday 03 March to Friday 31 March, 10am to 12noon	£53	£47	£17
Crafts – Creative Textiles	5	Friday 03 March to Friday 31 March, 1pm to 3pm	£53	£47	£17
Art – Painting and Drawing for Wellbeing	5	Friday 03 March to Friday 31 March, 10am to 12noon	£53	£47	£17
Family Learning – Half term crafts	1	Tuesday 21 February, 9.45am to 11.45am	FREE	FREE	FREE
Family Learning – Easter crafts £	1	Tuesday 04 April, 9.45am to 11.45am	FREE	FREE	FREE

£ These courses have additional materials costs. See course information on our website and Eventbrite for details



Clay Cross

Clay Cross ACE Centre, Market Street,
Clay Cross S45 9JE

The Clay Cross team can be contacted on

claycross.ace@derbyshire.gov.uk or 01629 537108 for

any additional information you require about Clay Cross courses, or for help with online booking. The office is usually open Monday to Friday during normal office hours.

For further information on any of the courses listed below and to book visit www.derbyshire.gov.uk/communitylearning

Scan the QR code to book



Course Title	Wks	Day, Date and Time	Fee A	Fee B	Fee C
Crafts – Pottery for Wellbeing £	6	Tuesday 10 January to Tuesday 14 February, 7pm to 9pm	£64	£57	£20
Sewing for Pleasure and Wellbeing	6	Tuesday 10 January to Tuesday 14 February, 9.45am to 11.45am	£64	£57	£20
Fitness – Tai Chi for Wellbeing	6	Tuesday 10 January to Tuesday 14 February, 11am to 12noon	£32	£29	£10
Art – Painting and Drawing for Wellbeing	6	Tuesday 10 January to Tuesday 14 February, 6.30pm to 8.30pm	£64	£57	£20
Brightside – Junk Journaling	6	Tuesday 10 January to Tuesday 14 February, 10am to 12noon	FREE	FREE	FREE
ALDD – Cooking on a Budget £	6	Tuesday 10 January to Tuesday 14 February, 10.30am to 12.30pm	£39	£39	£39
Cooking on a Budget £	6	Tuesday 10 January to Tuesday 14 February, 1pm to 3pm	FREE	FREE	FREE
ALDD – Cooking on a Budget £	6	Tuesday 10 January to Tuesday 14 February, 10.30am to 12.30pm	£39	£39	£39
Cooking on a Budget £	5	Tuesday 28 February to Tuesday 28 March, 1pm to 3pm	FREE	FREE	FREE
Help for Hearing Loss – Lip Reading and Signed Communication (continuation)	6	Wednesday 11 January to Wednesday 15 February, 12.45pm to 2.45pm	FREE	FREE	FREE
Crafts – Pottery for Wellbeing £	6	Wednesday 11 January to Wednesday 15 February, 9.45am to 11.45am	£64	£57	£20

£ These courses have additional materials costs. See course information on our website and Eventbrite for details

Course Title	Wks	Day, Date and Time	Fee A	Fee B	Fee C
Fitness – Dance fit	6	Wednesday 11 January to Wednesday 15 February, 5pm to 5.45pm	£24	£21	£8
Fitness – Tap Dancing – Intermediate	6	Wednesday 11 January to Wednesday 15 February, 6pm to 7pm	£32	£29	£10
Crafts – Pottery for Wellbeing £	6	Wednesday 11 January to Wednesday 15 February, 12.45pm to 2.45pm	£64	£57	£20
Brightside – Pottery	6	Thursday 12 January to Thursday 16 February, 12.45pm to 2.45pm	FREE	FREE	FREE
Crafts – Pottery for Wellbeing	6	Thursday 12 January to Thursday 16 February, 9.45am to 11.45am	£64	£57	£20
Family Learning – Half term crafts	1	Tuesday 21 February, 1pm to 3pm	FREE	FREE	FREE
Crafts – Pottery for Wellbeing	5	Tuesday 28 February to Tuesday 28 March, 7pm to 9pm	£53	£47	£17
Sewing for Pleasure and Wellbeing	5	Tuesday 28 February to Tuesday 28 March, 9.45am to 11.45am	£53	£47	£17
Fitness – Tai Chi for Wellbeing	5	Tuesday 28 February to Tuesday 28 March, 11am to 12noon	£28	£24	£9
Art – Painting and Drawing for Wellbeing	5	Tuesday 28 February to Tuesday 28 March, 6.30pm to 8.30pm	£53	£47	£17
Brightside – Creative Art for Wellbeing	6	Tuesday 28 February to Tuesday 04 April, 10am to 12noon	FREE	FREE	FREE
Crafts – Pottery for Wellbeing £	5	Wednesday 01 March to Wednesday 29 March, 9.45am to 11.45am	£53	£47	£17
Help for Hearing Loss – Lip Reading and Signed Communication (continuation)	5	Wednesday 01 March to Wednesday 29 March, 12.45pm to 2.45pm	FREE	FREE	FREE
Crafts – Pottery for Wellbeing £	5	Wednesday 01 March to Wednesday 29 March, 12.45pm to 2.45pm	£53	£47	£17
Fitness – Dance fit	5	Wednesday 01 March to Wednesday 29 March, 5pm to 5.45pm	£20	£18	£7

£ These courses have additional materials costs. See course information on our website and Eventbrite for details

Course Title	Wks	Day, Date and Time	Fee A	Fee B	Fee C
Fitness – Tap Dancing – Intermediate	5	Wednesday 01 March to Wednesday 29 March, 6pm to 7pm	£28	£24	£9
Brightside – Pottery	6	Thursday 02 March to Thursday 06 April, 12.45pm to 2.45pm	FREE	FREE	FREE
Crafts – Pottery for Wellbeing	6	Thursday 02 March to Thursday 06 April, 9.45am to 11.45am	£64	£57	£20

⚠ These courses have additional materials costs. See course information on our website and Eventbrite for details



Shirebrook

Shirebrook ACE Centre, Carter Lane, Shirebrook
NG20 8PE

The Shirebrook team can be contacted on

shirebrook.ace@derbyshire.gov.uk or

01629 537576 for any additional information you require about Shirebrook courses, or for help with online booking. The office is usually open Monday to Friday during normal office hours.

For further information on any of the courses listed below and to book visit www.derbyshire.gov.uk/communitylearning

Scan the QR code to book



Course Title	Wks	Day, Date and Time	Fee A	Fee B	Fee C
Cooking on a budget	6	Monday 09 January to Monday 13 February, 10am to 12noon	FREE	FREE	FREE
Cooking on a budget	6	Monday 27 February to Monday 03 April, 10am to 12noon	FREE	FREE	FREE
Family Learning – Half term crafts	1	Wednesday 22 February, 10am to 12noon	FREE	FREE	FREE
Family Learning – Easter crafts	1	Wednesday 05 April, 10am to 12noon	FREE	FREE	FREE

Help for Hearing Loss – Lip Reading and Signed Communication

These courses are for anyone with hearing loss and their surrounding people, family, friends and carers. It will enable better communication through using a combination of lipreading techniques and basic BSL (British Sign Language) signs.

If you are wanting to take the next steps with signing and maybe getting a qualification visit www.derbyshire.gov.uk/qualifications to search for details of our BSL courses starting this term.

Our Online Courses

If you can't attend one of our centre-based courses an online course may work for you. Courses coming up this term include:

- Art and craft courses and workshops
- Brightside courses
- Careers workshops
- German, Italian and Spanish courses at various levels
- Health and wellbeing courses including complementary therapies
- Lip reading
- Murder mysteries
- Tai Chi



If you are not sure about online learning, sign up for one of our **FREE online taster sessions**. These are an opportunity to find out if this style of learning suits you.

Our **live online courses** are delivered using freely available video conferencing software, usually Microsoft Teams. We make it as easy as possible for you to join a course, whatever device you have. You will be sent a link a few days before the course together with information about any resources you need for the course. Your tutor will guide you through the course activities.

Our **self-paced courses** are online workshops that you can work through at your own pace at any time during a 30-day period. They are hosted on a website called 'Nearpod'. You just click on the link provided and it takes you straight in to the course.

For full details of all of our current online courses visit www.derbyshire.gov.uk/communitylearning and scroll down for the links to our **live online courses** and **self-paced courses** collections on Eventbrite.

Please read course details carefully before booking to check that the content and level is suitable for you. If unsure please email adult.education@derbyshire.gov.uk with your question and contact details and someone will get back to you.

Scan the QR code to book



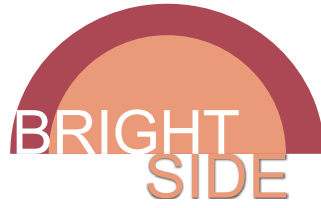
Scan the QR code to book



Brightside Mental Health

One in four of us experience mental health problems at some time in our lives.

Brightside courses are designed for anyone experiencing mild to moderate mental health issues e.g. suffering from anxiety, depression emotional or psychological, stress or isolation, low confidence and/or self-esteem.



There are a variety of courses to choose from across the county including cookery, healthy eating, gardening, journaling, overcoming stress and anxiety, photography, meditation, poetry, embroidery, willow weaving and tai chi. Courses include both online and centre-based options. Look out for Brightside courses in our brochures and visit www.derbyshire.gov.uk/BrightSide

Family Learning



Our family learning courses are a fun way to enjoy time together whilst learning new skills. Courses are suitable for parents/carers/grandparents and school aged children. See www.derbyshire.gov.uk/familylearning for more information. Please read the course information on Eventbrite for age suitability.

Making Choices

If you are thinking of going back to learning and maybe working towards a qualification, attending a 'Making Choices – Step into Learning' session will help you to find out your level of working and help decide on the options available.



Contact your local centre to book on to a session or email

making.choices@daces.derbyshire.gov.uk

Keeping you and your loved ones safe

You may wonder why, when you book on a community learning course, you are asked to watch a video about **Prevent**, the government strategy to safeguard people and communities from the threat of extremism and terrorism. You may think that there are no terrorists or extremism in Derbyshire or that it won't affect you.

Prevent referrals in Derbyshire have increased in the past year, with Counter Terrorism Police being particularly concerned about:

- Self-initiated terrorists (S-Its)
- Online extremism
- Extreme right-wing terrorism
- Islamist terrorism

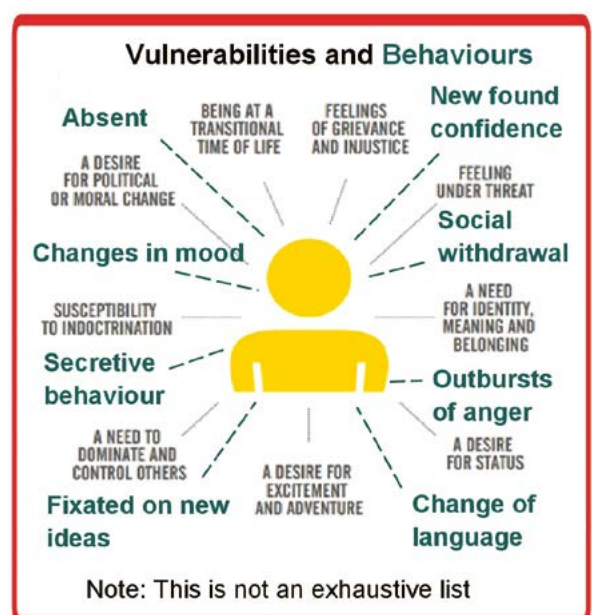
The ongoing COVID pandemic has resulted in some people being isolated and spending more time online. This includes people who are the most vulnerable to being drawn into supporting extremist beliefs.

In Derbyshire, the highest number of referrals in this past year were:

- from the police and education providers (including DACES)
- for young people aged between 12 and 16
- in Derby City, followed by Amber Valley and then Chesterfield

Social media and messaging sites can be used to reach out to vulnerable and young people and can communicate extremist messages. You might not be a key target for those wanting to draw people into extremism and terrorism, but someone in your family might be. The diagram (right) shows some things to look out for.

If you are worried that someone you know may be being drawn into extremism or terrorism, talk to your tutor or any of our staff **today.**



Supporting you to learn

Tell us about your needs when enquiring or booking on a course – we will always work to meet the needs of each learner. Our Eventbrite booking form asks for details of any disability or learning difficulty you may have. If you request it, someone will be in touch to discuss your needs and ask what we can do to help your learning.

All additional support provided is based on individual assessment. For detailed information about the support that we can provide, including financial help and learning support, visit derbyshire.gov.uk/theguide or contact the centre providing your course.



Contact us

For more details about a particular course or venue,
or help with online booking:

Alfreton alfreton.ace@derbyshire.gov.uk 01629 533090

Bolsover bolsover.ace@derbyshire.gov.uk 01629 537912

Chesterfield hunloke.ace@derbyshire.gov.uk 01629 535002

Clay Cross claycross.ace@derbyshire.gov.uk 01629 537108

Shirebrook shirebrook.ace@derbyshire.gov.uk 01629 537576

For all other enquiries, comments or complaints contact:
adult.education@derbyshire.gov.uk

Please be aware that our centres are not open every day. If you get the answer machine please leave a message with your name and contact details and someone will call you back.

For further information or to get a copy of this brochure in a community language, on audio tape or in large print please call your local ACE centre.

The details in this brochure are correct at the time of going to print.