

Clarbrough & Welham

Community Newsletter

Quarterly: Autumn 2023

Retford Heritage Open Day **New District Councillor**
Clarbrough Primary School latest **Struggling with Debt ?**
Retford Business Forum Award **What are T Levels ?**
China no longer has biggest population **Parish Pasture latest**
Ubuntu Linux classes coming soon! **Emergency texts**
Lincs & Notts Air Ambulance
and much, much more!

© 2023 Clarbrough & Welham IT Group with generous support from Clarbrough & Welham Parish Council and distributed by our tireless team of volunteers.

Material published in this Newsletter does not necessarily represent opinions of the Editor. Material submitted without full contact details will not be published. All publication decisions remain the responsibility of the Editor alone.

Visit our community website: www.clarbrough-welham.org.uk for much, much more!



Bassetlaw

Are you struggling with debt?

Fears of a "debt time-bomb" have been raised by Citizens Advice, which said growing numbers of households faced a "wild west" when seeking help. The charity is helping more people who do not have enough income to cover essential expenses.

Director of policy Matt Upton said 51% of those it sees with debt issues have negative budgets, compared with 36% before the pandemic, with no sign of that figure coming down. Mr Upton said people coming to Citizens Advice having not paid the bills was "nothing new" but clients' use of unsecured credit was at its highest level in four years.

He added, "When people reach crisis point, you would hope that what greets them here is a system and set of solutions that will help them get back on their feet, or at worst, not make things actively harder for them. The reality is very different. The most apt description is a wild west - search online for options to pay off debts, and you'll be bombarded by profit-seeking firms offering misleading advice about debt solutions which won't help."

Mr Upton called for changes to "make sure the system isn't actively working against them" when people are struggling to pay the bills. He also called for third-party debt collectors to be brought under a proper statutory regulatory framework.

Citizens Advice Bassetlaw have a specialist team of experienced debt caseworkers who can support you to contact your creditors and look at ways to deal with your debts and suitable debt solutions to get you back on track and give you a fresh start with your finances.

They can also help you to maximise your income and minimise your expenditure, so that you can hopefully remain within your budget and remain out of debt.

The team are based at Bridge Street, Worksop and at Retford Town Hall.



Call or WhatsApp them on 01909 393 960 or email advice@bassetlawca.org.uk

For information and advice, contact Citizens Advice Bassetlaw on 01909 498 888 or email advice@bassetlawca.org.uk or visit <https://www.citizensadvice.org.uk/>

RET FORD HERITAGE DAY

SATURDAY 9TH SEPTEMBER 2023

Retford Heritage Day

Saturday 9th September 10am – 4pm

"Creativity Unwrapped"

Exciting, **free** art event at Retford Town Hall for adults and children!
See displays, demonstrations and hands on sessions with local artists such as:

Cath Ray, Stephen Grey, Amina Khan, Jenny King, Annie Turner, Jayne Day, Polly Warren, Phil Neal, Nicky Mollison.... and many more... Come and meet them.
Sketching, painting, sewing, sculpting and quilting are just some of the skills on show.

Children's activities include paper crafts as well as Lego building with National Lego Champion, Nate Dias.
See the programme of events for more details.

See page 6 for all the venues freely open on Retford Heritage Day, and page 20 for a programme of events in town on the day.

Looking for a job?

Bassetlaw Community and Voluntary Service

If you are looking for a new job locally, some online sources offer quite a range of opportunities.

If you are interested in, or already have experience of, the voluntary sector, a good first stop resource is Bassetlaw Community & Voluntary Service's (BCVS) weekly *Bulletins*. For easily accessible copies, just go to our community website's (www.clarborough-welham.org.uk) homepage where the BCVS logo (above) links directly to the latest *Bulletin*. At the top of Bulletin front page is a link to *Job Vacancies*.

Sticking with our community website, there are many other links provided in the **Employment** section from the homepage's main menu.

Editor

I choose a lazy person to do a hard job, because a lazy person will find an easy way to do it.
Bill Gates (1955 -)

COMPUTER PROBLEMS?

I'll come to you at your home or office!

- Virus & Malware Removal
- Internet & Email Issues
- Slow Performance
- Forgotten Passwords
- Printer Problems
- Data Backup/Recovery
- Windows Updates & Upgrades
- Security Checks & Updates
- Software & Hardware Installation
- General Repairs
- All Other Computer & Related Technical Issues

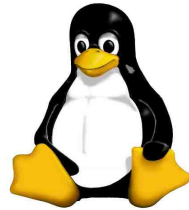
20 Years Experience

Call James 07568174474

Your local & friendly computer expert



Ubuntu



Ubuntu Linux operating system (OS) is coming to Bassetlaw!

Regular readers of our Newsletters will remember the article *Windows 10 is nearly dead – do I have to buy a new computer?* which laid out the reasons why switching from Microsoft-land to Ubuntu Linux makes great financial sense.

What we didn't have space in that issue to explore is the huge advantages getting to grips with Linux can have. Briefly, these fall into the following categories:

1. The Operating system and applications used within it are all FREE and are subject to what is known as Copyleft (as opposed to copyright) which means it can be copied and given to anyone else – or installed on several systems without having to pay a fee for each extra system used.
2. Core applications such as LibreOffice, Gimp image editor and Firefox web browser all provide facilities that mirror – and can communicate with/through – those in Microsoft's Office365*.
3. Enable users to demonstrate 'transferable skills' which can open up new promotion or employment opportunities.

* This aspect is really crucial to your Editor who receives content for these Newsletters from the widest range of Public, Voluntary, Commercial and Private sectors in all sorts of file-types – *LibreOffice* has no problems!

On Saturday 9th September, Clarborough & Welham IT Group will be hosting a **FREE introduction** to Ubuntu Linux, the free alternative to both Microsoft Windows and also Apple Mac OS, at **Clarborough Village Hall on Saturday, 9th September from 10:00 to 11:30**; registering your name with Greg is highly advisable to reserve a place!

This session will give folks a free, hands-on, experience of Ubuntu Linux, probably the most important 'distro' (distribution) of the Linux OS.

Clarborough & Welham IT Group has already had all of its laptops converted to Ubuntu Linux in preparation for resumption of classes that will be held on Saturday afternoons (13:15-14:45) starting on October 14th, 2023 and running for our usual 5-week blocks to 11th November**. Cost for the full 5 weeks will be just £30.

These classes will not only give opportunities to savour Ubuntu Linux but also, mainly, focus on the above, free, open source applications which can be used on any Microsoft Windows (10 or 11) as well as Apple Mac systems – come and get onboard!

So, if you are viewing the demise of Microsoft's Windows 10 in Autumn 2025 and shudder at the cost of replacing your computer, come along and learn how to move forward at only a tiny fraction of cost of replacing your current hardware.

To find out more, contact Greg on 01777 700 918 or email clarboroughwelham@gmail.com

Get anti-scammer advice too! Read on...

... We have a wide range of sources of advice about latest scams and how to recognise and avoid them as well as what to do if you do get caught by a scammer. Another reason for enrolling in our Autumn classes!

**These preliminary dates do include Autumn half-term school holidays so classes could be suspended for the two-week break and therefore extended until November 25th if members so prefer.

Greg Herdman
Chairman, Clarborough & Welham IT Group

“CATCHING A Killer With Stuart Gibbon”

**at Retford Library
Thursday 19th October, 14:00**

Join Stuart Gibbon, co-author of the *Straightforward Crime Reference Series*, as he discusses his latest book, *Catching a Killer*, a fascinating insight into murder investigation.

The talk will include reference to true crime case studies and how criminal investigations, particularly murder, have evolved throughout the years.

Tickets are £3 and booking is essential – please purchase your ticket in advance at Retford Library, visit inspireculture.org.uk to book online, or call 01623 677 200.

Goacher's Farm Shop

Wood Lane, North Wheatley



The only traditionally grown Wheatley fruit.

Picked and PYO
**Strawberries, Raspberries, Cherries,
Plums, Apples, Pears etc**
Taste the difference!
Fresh and frozen

Also available;
**Asparagus, Turkeys, Honey, Jams,
Chutneys, Potatoes, Vegetables, Eggs,
Juices and Home baking**

Now serving hot drinks

For opening times please

Phone; **01427 880 341**

or www.goforgoachers.co.uk

Clarborough Village Hall's Bennett Room needs tidying!

CDCA (Clarborough & District Community Association) are managers of our village hall and need to 'tidy up' their office space in our *Bennett Room*:



None of CDCA's committee are aware of who are the owners of these, essentially children's events, items so we need to know who they belong to and agree some more efficient storage options.

If we cannot identify owners of these items we will have to look to disposing of all of this material.

If you, or any members of your group have any idea who are the owners of this material, please either contact them to inform them of this issue or pass their name(s)/contact details to either Steve or Greg at :

Greg (CDCA Chair): 01777 700 918
 or clarboroughwelham@gmail.com
 Steve (CDCA Booking Secretary): 07442 105 268 or
clarboroughvillagehall@gmail.com

Greg Herdman

Bassetlaw Action Centre urgently need more volunteer drivers for their Community Car Scheme

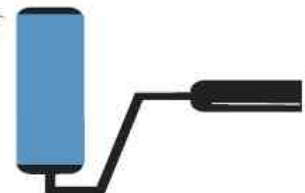
Volunteers help vulnerable Bassetlaw residents to get to appointments, visit friends and social groups, and to go shopping. This service can be a vital lifeline that enables older people to stay in their homes for longer while still living a full and independent life. All driver expenses are paid and training is provided, commitments can be as little as one day a month to fit round the volunteer.

Bassetlaw Action Centre also has a number of other volunteer roles available, including befriending, activity supporter and administration.

For more information please visit:
www.bassetlawactioncentre.org.uk
 email enquiries@actioncentre.org.uk
 Phone 01777 709 650 where we will be happy to help.

Follow us on Facebook [Bassetlaw Action Centre](#) | Follow us on Twitter [@ActionCentre](#)

ANDI GRAY
 PAINTER & DECORATOR



- INTERIOR & EXTERIOR
- QUALITY PAPER HANGING
- DOMESTIC & COMMERCIAL
- QUICK & QUALITY TURNAROUND ON RENTAL PROPERTIES

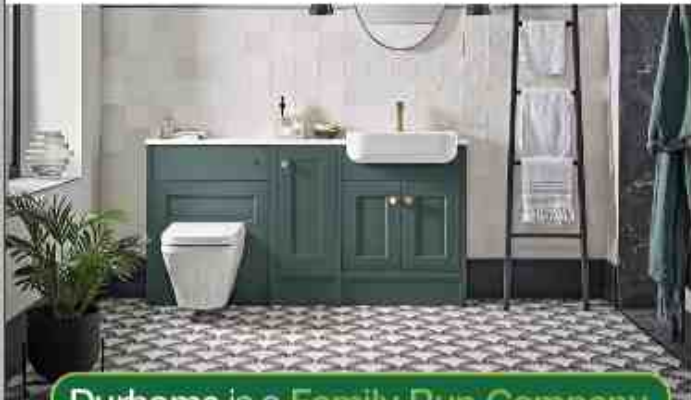
07837 370827

andigraypropertyservices@hotmail.co.uk

A LOCAL TRADESMAN ON YOUR DOORSTEP

A professional service to a high standard





**Durhams is a Family Run Company
Serving the Area for Over 50 Years...**

WE OFFER A FULL RANGE OF
PLUMBING & HEATING SERVICES

**INTEREST
FREE CREDIT**

on New Worcester Bosch
Boiler Installations*

*SUBJECT TO TERMS & CONDITIONS

- Domestic
- Commercial
- Gas & Oil
- Solid Fuels
- Service Plans
from £15 per month*
- Servicing
- Repairs
- Kitchens
- Bathrooms



E: enquiries@durhamsheating.co.uk

f www.facebook.com/Durhamsheating

CALL NOW 01777 702684
www.durhamsheating.co.uk

What are T-Levels?

T-Levels are new alternatives to A levels and apprenticeships and give young people both the technical and practical skills needed to get them work-ready.

A T- Level carries the same UCAS points as three A-levels and students will complete an industry placement which will help them develop the knowledge, attitude and practical skills to thrive in the workplace or move in to Higher Education.

T-Level students spend 80% of the course in the classroom, learning the skills that employers need. The other 20% (minimum 315 hours) is a meaningful industry placement, where they put these skills into action. Industry placements must take place in a work environment within the industry / commercial setting as the T-Level subject.

T-Levels are being introduced over the next few years and will cover 20 industrial / professional sectors. It's hoped that these will replicate the business sectors across the region. The full list of T Levels can be found here:
<https://www.tlevels.gov.uk/students/subjects>

Two local school/college deliverers of T-levels currently are Elizabethan Academy (Retford) and RNN Group (Worksop). Contact details are:
Elizabethan Academy: 01777 713 700
RNN Group : 01909 504 500

See also:

Information for Students:

<https://www.tlevels.gov.uk/students/about>

Resources for Parents:

<https://www.tlevels.gov.uk/students/parents>

Information for Employers:

<https://employers.tlevels.gov.uk/hc/en-gb>

Finally, to explore more local T-levels, go to:

<https://employers.tlevels.gov.uk/hc/en-gb/articles/4408396438162-Find-your-nearest-T-Level-provider>

Editor

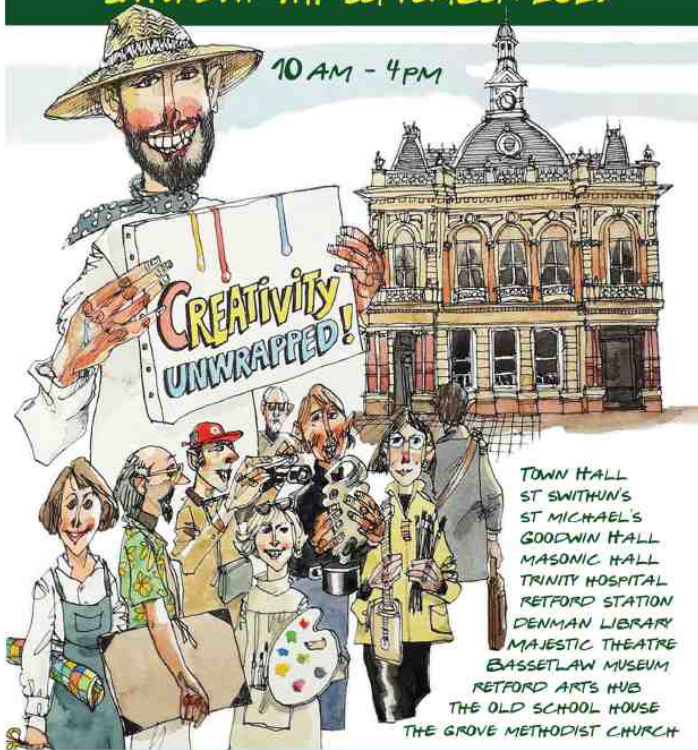
Our Humour Corner

A scammer called my grandma and said he had all of her passwords.

She got pen and paper and said ' thank God for that, what are they?'

RETFORD HERITAGE DAY

SATURDAY 9TH SEPTEMBER 2023



Heritage Open Day

Map Key

Public Car Park	Majestic Theatre*	Retford Arts Hub*
Public Convenience	Retford Little Theatre	Sloswicke's Almshouses*
Shopmobility	Denman Library*	The Pilgrims Gallery
Pedestrian Route	St. Swithun's Church*	
Market Square	St. Michael's Church*	
Town Hall*	Grove St Methodist Church*	
Trinity Hospital*	Masonic Hall*	
Bus Station	Chesterfield Canal - Seth Ellis	
Train Station*	Goodwin Hall*	
Taxi Rank	The Old Police Station	
Bassetlaw Museum*	The Old School House*	

*Buildings freely open on Heritage Day

See inside for minibus tour details. Departs the museum every half hour.



FIND OUR VENUES ON THE MAP.

VISIT HERITAGEOPENDAYS.ORG.UK FOR MORE INFORMATION

<p>Town Hall Free entry to art event Open all day</p>	<p>Trinity Hospital Visit this historic almshouse still in use today Open all day</p>	<p>Retford Station 'Hidden Heritage' room tours For one day only!</p>
<p>Bassetlaw Museum Explore the extensive costume collection Open all day</p>	<p>Majestic Theatre A view behind the curtain. Tours from 10am to 2pm Book on 01777 706 866</p>	<p>Denman Library Heritage Cafe and Local Art exhibition Open all day</p>
<p>St Swithun's Church With stained glass windows and live music Open all day</p>	<p>St Michael's Church Explore this beautiful historic church Open all day</p>	<p>Grove Street Methodist Church Open despite building work! Open all day</p>

<p>Retford Masonic Hall Tours on the hour. Famous Freemasons' Exhibition Open all day</p>	<p>Chesterfield Canal Book Seth Ellis trips on the Chesterfield Canal Trust website</p>	<p>Goodwin Hall Displays: History of the Hall and Kings' Park Open all day</p>
<p>The Old School House Experience a musical extravaganza! Open all day</p>	<p>Retford Arts Hub Art Exhibition and a history of the building Open all day</p>	<p>Sloswicke's Almshouses Plenty of fascinating history! Open all day</p>
<p>CHILDREN'S ACTIVITIES Make sure to bring the little ones along to the Museum for crafts and art, or the Town Hall for Lego and face painting. Both venues open all day. See you there!</p>	<p>MINI BUS Take the FREE minibus tour to the Station with a drop off point at Trinity Hospital. Bus departs every half hour beginning 10:30am from the Museum.</p>	<p>A DAY OF DANCING Look out for a number of Folk Dance groups performing around town all day! Find out more at the Information Stall outside Bassetlaw Museum.</p>

PLEASE NOTE:
Most tours will run on the hour from 10:00am.
Refreshments available at venues marked with a teacup icon

BCVS | 50th NEWS

Bassetlaw Community and Voluntary Service | Anniversary | 1973 - 2023



Shared Prosperity Funding available to Bassetlaw groups

Community and voluntary groups in Bassetlaw will soon be able to benefit from a share of more than £337k of the Government's UK Shared Prosperity Fund.

Following a rigorous selection process, we are delighted to announce that Bassetlaw Community and Voluntary Service (BCVS) has been appointed to develop, manage and administer the 'Community and Voluntary Grant Programme', over the next two years on behalf of Bassetlaw District Council.

The community and voluntary funding is part of a package of measures that will be delivered thanks to The Council securing more than £3.3million of UKSPF monies, which will fund projects and initiatives that build pride in place and increase life chances across three key areas - Community and Place, Local Businesses and People and Skills.

We are also seeking a panel of volunteers to support the decision making and the distribution of funds.

For more information and to apply for the funding or to enquire about volunteer as a grant panel member, please visit the SPF web page.

 www.bcvs.org.uk/ukspf
communitygrants@bcvs.org.uk
 01909 476 118



SPF Funding Volunteers Needed Cost of Living

Volunteer in Bassetlaw



A large selection of community groups and charities across Bassetlaw are in need of volunteers - can you help?

From walking and wildlife to community grant panel members - there are lots of different things you can do to support local causes continue the amazing work they do.

There are lots of roles listed on the volunteering page on our website, and if you can't find your ideal role on there please email us and we will be able to match you with something to suit your interests.

 www.bcvs.org.uk/volunteer
 Email: involve@bcvs.org.uk

Cost of Living Autumn/Winter 2023

We will once again be working alongside partners across Bassetlaw to communicate support and services available to help people with concerns they may have around the Cost of Living.

Our Cost of Living web page will be updated in the coming weeks to ensure the most up to date information is on there in time for the colder weather arriving.

www.bcvs.org.uk/costofliving

tel: 01909 476118

Bassetlaw Community and Voluntary Service, Old Abbey School, Priorswell Road, Worksop, S80 2BU
 web: www.bcvs.org.uk | email: bcvs@bcvs.org.uk | Charity Number: 1140782



Welcome to Fraser McFarland your new District Councillor

I would like to thank everyone who supported me in May's local elections. Since getting elected to represent you on Bassetlaw District Council, I have been busy attending Parish Council meetings, supporting fundraising events and fighting your corner at Bassetlaw District Council.



In May I met with the Home Secretary, the Rt. Hon. Suella Braverman MP and Nottinghamshire Police and Crime Commissioner Caroline Henry and raised concerns about rural crime including fly-tipping and speeding. I welcome the Speed Watch initiative and would encourage residents to join in their local efforts.

On a visit to the new Skills Hub in Worksop, I attended a meeting with the Levelling Up Minister, Dehenna Davison MP. The Minister spoke about the huge opportunities available for rural communities across Bassetlaw to benefit

from the Levelling Up Partnership status awarded to Bassetlaw District Council by the Government. I will be making sure our communities voice is heard and we get our fair share of this opportunity once the full details are announced.

This opportunity to deliver Levelling Up is on top of the benefits available to our community from the STEP nuclear fusion project at West Burton. This multi-billion-pound project secured by Brendan Clarke-Smith MP and Nottinghamshire County Council will bring great opportunities across Bassetlaw.

At my first full council meeting, I put forward a motion to tackle damp in social and private rented accommodation. It is important that all residents have safe and clean housing and that is why I proposed this important motion, which achieved cross party support and was approved by the Council - a rare achievement for an opposition councillor to change Council policy.

In the coming weeks, I will be meeting with our local Member of Parliament, Brendan Clarke-Smith and my fellow local councillors to discuss the Pulverised Fuel Ash proposals near the Idle Valley. I strongly oppose these plans and would ask residents to join me in campaigning to protect the Idle Valley. The recent campaign against the solar farm proposals near Clayworth shows that together we can make a difference.

***Cllr Fraser McFarland
District Councillor for Clayworth ward***

Tel: **07341 568 602**

Email: **Fraser.McFarland@cllr.bassetlaw.gov.uk**

Facebook: **fb.com/CllrFraserMcFarland**

Reading – all about it!

Well, not quite – but you're here now, so read on!

A young person's ability to read – and wanting to read – are some of the most important skills and attitudes that we can encourage and teach. Later, the ability to read quickly – called *speed reading* - can allow us to absorb more in a given time or get a job done in less time.

Learning to read – tips for parents and carers.

Children need to learn that reading is fun, so read to them often from an early age! This will lead them to appreciate that books are fun and will motivate them to learn to read themselves.



Another aspect is to 'up' their language skills by talking to them a lot – and giving them a chance to reply. This is one very well established reason for not using dummies, or only using them at bed time or when in pain or upset. Using dummies often leads to youngsters not forming their speech well such that they often need speech therapy later. There are also a raft of health reasons for minimising the use of dummies. Talking to your baby and youngster encourages them to learn spoken language and develop communication skills.

Also, encourage writing which helps them recognise letters and link these to their phonemes – the sound associated with each letter – so-called *phonics**. Start by teaching your youngster to write their own name and link the letters to their sound (phoneme). Extend this to other words for things that the youngster enjoys such as their favourite food!

Given sufficient practice, we all learn to recognise common words by the overall shape and don't need to resort to their

phonemes although these can be important when meeting new words.

Speaking of food (always a good topic!) research has shown that children who are hungry don't concentrate well and don't remain 'engaged' in learning activities. This can also lead to tendencies to disruptive behaviour.

Increasing your reading skills

One of the most useful set of reading skills that your Editor has picked up over the years is that of *speed reading* which is just what it says on the tin!

There are a number of techniques within this speed reading skills base, some of which are:

Follow the finger which involves simply following your finger along the text, much as you might do when teaching a youngster to read, but move your finger a bit faster than is 'comfortable'. If you do this day-after-day you will find that your 'comfortable' speed will slowly increase and will ultimately not need a finger at all.

Paragraphs can often be scanned with a quick check of the meaning of the first sentence and then the last. Many authors set out their aim for that paragraph at the beginning and do a sort of summary at the end. This can mean that you only need to read a small part of the text – try this on the second paragraph of *tips for parents and carers* above.

Scanning is a technique to trigger and extract key information and ideas such as names, numbers, specific facts. Scanning involves moving your eyes quickly down the page, identifying specific words and phrases to find a particular answer or grasp the basic main idea. You can also use it to determine whether a new resource will answer your questions or not.

Skimming will focus on understanding the main idea and concept. It works best with non-fiction material. You won't read anything. You read only what is important to you. You may stop for interesting facts but then quickly continue to skim the book.

Skimming is like browsing a new travel book or moving your finger over a map of a city you wish to travel to. At first, you may spot pictures, read selected snippets of information or identify general areas, landmarks, or highlights. You want to know the bigger picture first before exploring a location in detail. These practices will teach your brain to understand, comprehend and remember a lot faster.

Previewing is the overall process of gathering information that includes both skimming and scanning as its most proven techniques. It is, furthermore, all about answering these five 'W' questions: Who, Where, What, When, Why. *Who* relates to people involved. *Where* relates to the location. *What* refers to the general idea/topic. *When* is about the time of an event. *Why* refers to reasons, analysis. Write down all key facts to remember them later.

* Most of the research on teaching reading has been carried out in alphabetic script languages such as English – the field is currently very thinly researched for non-alphabetic scripts such as Chinese and Japanese.

Editor

Change will not come if we wait for some other person or some other time. We are the ones we've been waiting for. We are the change that we seek.

Barack Obama (1961-)



**Your Parish Council
(part 3 –
Councillors and
elections)**

On 5th May we all had the opportunity to vote for the District Councillor of our choice and also for the nine Parish Councillors of our choice.

The District Councillor election returned a new name for the Clayworth Ward, to which Clarborough and Welham both belong. Our new Bassetlaw district Councillor is Fraser McFarland – see his article on page 8.

Although, actually, we did not get to vote for our Parish Councillors! Like about 30 other (out of 51) Parishes across Bassetlaw there were not enough people willing to become Councillors in our Parish. In 17 other of those Parishes there were exactly the right number of people standing to get a full Parish Council – so again no vote. Only 4 Parishes had to have an election to select Parish Councillors!

All of this leaves about 30 Parishes with unfilled seats and 4 of those may not have enough Councillors to form a Parish Council. This is a sad state of affairs when local people do not wish to help to run their own local services. It is a great erosion of our democratic society. Parish Councils are not run on any form of Party Political basis – just on what is best for the people of a particular Parish.

There are only 7 appointed Councillors on Clarborough & Welham Parish Council and so there are 2 empty seats available. Meetings are held only once every 6 weeks, on average, so they are not arduous. Each Councillor is expected to take on responsibility for some aspect of the Parish Council 's work, but even this is not usually very time consuming. At times, particular activities become more busy, but generally this is usually short lived.

Please come along and see your Parish Council at work and see if you would be willing to join the Parish Council to help our Parish residents. Contact : clarandwelpc@yahoo.com for further information.

**Paul Willcock
Parish Councillor
Clarborough & Welham Parish Council**

Editor's footnote: Clarborough & Welham Parish Council welcomed 'new recruit' Councillors Lynne Moody and Ross Joyce at their June meeting.

Also, see page 24 for details of forthcoming Parish Council meetings.

Love is patient and kind; love does not envy or boast; it is not arrogant or rude. It does not insist on its own way; it is not irritable or resentful; it does not rejoice at wrongdoing, but rejoices with the truth. Love bears all things, believes all things, hopes all things, endures all things.

Corinthians 13:4-7 Bible (English Standard Version)

The Allegra Voice Choir

Why were we singing in a barn?



It was our end of year social, celebrating a great year of singing, performing and laughs. We had planned a family and friends picnic in a secret location but the weather denied us this. Not ones to be beaten, we relocated, picnics and all, to a local barn and had a lovely time.

The renowned James Fox is our Musical Director and he leads us to many interesting places. His engaging style of directing keeps us learning with passion and fun, raring to perform.

We are looking to expand our team, all voices, both men and women. There is no audition, in fact nothing to stop you coming to see if we are what you are looking for.

We will be returning from our summer break on Tuesday 5th September. We rehearse in St. John the Baptist Church, Church Lane, Clarborough at 19:15 every Tuesday so why don't you come along, I can guarantee you will be made very welcome.

**Judith Smith
Chair
07785 521 838**

Government extends £2 bus fare cap and protects vital services

To help people with cost of living pressures and save on everyday travel costs, the government will also provide up to £200 million to continue capping single bus fares at £2 outside London until the end of October 2023 and then at £2.50 until 30th November 2024 – when the government will review their effectiveness and future bus fares.

LAWNMOWERS

Tony Halford



**Plant & Grass
Machinery
Specialist**

36 Albert Road, Retford, Notts. DN22 6JB

**Tel: (01777) 860 704
Mob: 07976 941 407**



Muslim Charity projects in and around Bassetlaw

Muslim Charity is a UK-based charity with its headquarters at Eaton Hall in Retford, Nottinghamshire. As well as working in more than a dozen developing countries around the world it also supports local communities in and around Bassetlaw. Here are some of the projects it has supported locally:

1. Two life-saving defibrillators donated to and installed at Ranby and Sutton-cum-Lound.
2. Six Queen’s Platinum Jubilee Commemorative Benches handed over and installed for local communities in Tuxford, Ranksill, Ranby, Mattersey, Rampton and Woodbeck and Headon cum Upton.
3. Supported the Bassetlaw Food Bank.
4. A resuscitator unit handed over and installed at the Bassetlaw Hospital, Worksop.
5. New gateway entrance installed at the Millennium Green project in Mattersey.

More recently, Muslim Charity has sponsored the School Football Kits at Gamston Primary School and there are more projects to support the local communities of Bassetlaw in the pipeline.

Aside from local projects, Muslim Charity has over the past year helped 1,204,244 people across 13 countries around the world through the provision of safe water, health and education projects, support of orphan and vulnerable children and establishing small businesses and livelihood opportunities for families in the developing world so that they can lift themselves out of poverty for good.

Muslim Charity Responds to Southern Turkey Earthquake

Muslim Charity acted swiftly in response to the devastating earthquake that struck Southern Turkey on 6th February 2023. The earthquake, measuring 7.8 on the Richter scale, affected provinces including Adiyaman, Hatay, Kahramanmaraş, Kilis and Gaziantep, impacting millions of people.

Through the support of generous donors, Muslim Charity made a significant impact by providing urgent relief to approximately 19,000 beneficiaries. Aid deliveries included 900 food packs, 350 gas cylinder-stove units, and 625 baby kits to meet the immediate needs of affected communities. Additionally, 10,000 hot meals were served, and 1,500 thermal blankets and winter kits were distributed for protection against the harsh winter conditions.

Muslim Charity also provided 500 sleeping mattresses, 200 hygiene kits, and 10 container homes to support those displaced by the earthquake. These efforts aimed to alleviate suffering and promote health and hygiene practices among the affected population.

Muslim Charity's response played a crucial role in providing vital assistance to communities affected by the earthquake.

You can learn more by visiting www.muslimcharity.org.uk or calling 03000 111 786.

Maroof Pirzada
UK Director of Muslim Charity

Growing with Muddy Fork



The growing season is now in full swing at Muddy Fork, Retford’s Gardening for Wellbeing charity based at the Idle Valley Nature Reserve. Despite the changeable and unreliable weather conditions this year (too hot? too cold? too wet? too dry?), not to mention the usual predators, things have managed to grow. Potatoes, cabbages, courgettes and much more are already being eaten and enjoyed, while in the polytunnels the tomatoes are coming along nicely.

Rose Thorpe, the new Muddy Fork General Manager, is now well settled into her role and working brilliantly with Pete Atkins, the Garden Co-ordinator, and the rest of the team.



Rose has been proactive in making contacts locally, networking with businesses and other potential partners. Some fantastic donations have been forthcoming as a result, ranging from seeds and plants to garden tools, and from pots of paint to wood-chippings. The impact can be seen in the garden where you can now see colourful displays of flowers and improved paths.

Meanwhile the bees are happy and producing honey, and in the orchard some of the fruit trees are well laden. The redcurrants have been harvested and processed into jelly for sale. Seeds are still going in and everyone is looking forward to bumper harvests – weather permitting!

The project would love to hear from anyone who would like to get involved or to make a referral. Muddy Fork is a supportive environment offering both a sense of community and beneficial access to the natural world. More details including how to make a referral can be found on the Muddy Fork website www.muddyfork.org and you can make contact via the website, or by emailing enquiries@muddyfork.org

A friend is one soul abiding in two bodies.
Aristotle (384 BC-322 BC)

Clarborough's History – a short introduction

Great Domesday – the 'national' (well, almost) survey commanded by William I (The Conqueror) was published in 1086. Clarborough appears in that book as Claueburch or Claireburg.

Retford, is one of the oldest boroughs in England, the first documentary evidence of Retford was found in the Domesday Survey of 1086. King Henry I established the borough of East Retford in 1105 and it was granted a Royal Charter by Henry III in 1246 allowing a market to be held each Thursday.

In 1777 the Chesterfield Canal was opened through Clarborough, providing navigation to the Trent. With a wharf at the site of what was the Gate Inn on Smeath Lane, distance communications were beginning to bring Clarborough (or Clareborough as it was often called as recently as the mid-19th century) into the wider communication network.

By around this time Workhouses were developing locally in Clarborough, East Retford and Sutton.

It is interesting to note that a Parliamentary report of 1777 noted that local parish workhouses had the following numbers of inmates: East Retford (30); Sutton (40) and Clarborough (60).

Populations of local communities recorded : East Retford (2,491) in 1831, Clarborough (2,504) in 1853 also put the relationship between East Retford and Clarborough into perspective.

However, we jump ahead of ourselves. At around the same time that the canal arrived, the national road network was being upgraded with the introduction of **Turnpike highways**. One such ran from Retford (Spital Hill) to Clarborough (1824-76) and another from Saundby to Gainsborough (1787-1884) and the Trent, almost certainly following the route of the current A620, once again, pulling Clarborough into the wider 'scene' and together with the canal may well have shifted the centre of gravity of the village away from the church towards Main Street as we now see it.

Soon this transport mix would be joined by the railways; the **Manchester, Sheffield and Lincolnshire Railway** opened in 1849, skirting the village – as late as the 1890s a siding was operating at Welham and children would be sent from the Elementary School to collect or despatch parcels ! Welham siding provided base for an extra locomotive (known locally as a 'banker') to assist coal trains climbing the gradient towards the east. The low bridges carrying this rail line across the road from Retford to Gainsborough through Welham and Clarborough would come to present considerable problems for heavy vehicles as the 20th century progressed.

Clarborough Primary School was in existence at the time of the 1871 Education Act in a building on land adjacent to the church but exactly when it was opened remains a bit of a mystery. Although no longer a school, the original building still exists as part of a private property.

It is vital to remember that the Parish of Clarborough was, until the 20th Century, much larger than now. It

originally extended from its current northern limits around Clarborough village right into central Retford, a wedge-shaped parish running right down Moorgate and Spital Hill. It was only in 1934 that what had been Moorgate Chapel of Ease (started in 1828) became St.Saviour's Church and the centre of its own parish, occupying the smaller, but more populous, southern end of the old Clarborough Parish leaving the remaining Clarborough Parish more clearly centred on Clarborough itself. Only relatively recently was the parish's name changed to Clarborough & Welham Parish to better reflect its structure.

East Retford went through number of constitutional changes but from 1835-1974 was a Municipal Borough but was then combined with other borough's to become part of the new Bassetlaw District.

To read much more about local history including fascinating origins of the name Welham together with the national importance of East Retford in terms of political emancipation, visit our community website (www.clarborough-welham.org.uk) and explore the *Local History* pages.

Editor

History of School leaving ages in England & Wales

The **1870 Elementary Education Act** - known as the *Forster Act* because since it was drafted by William Edward Forster (1818-1886), generally required children to attend school between the **ages of 5 and 10** though with some local discretion such as early leaving in agricultural areas. This 'loop-hole' was closed by the **1880 Elementary Education Act** which made attendance at school compulsory from 5-10 years of age.

The **Elementary Education (School Attendance) Act 1893** raised the minimum school leaving age to **11**. The above Act was later amended in **1899** to raise the leaving age to **12 years** of age.

In **1900** school attendance was made compulsory between the ages of **5 and 14 years**.

The **Education Act 1918**, drafted by Herbert Fisher, enforced compulsory education from **5-14 years** but also started the process of tertiary education for 14-18 year olds. Post-World War 1 financial cuts prevented this latter aspect coming into effect until much later. The **Education Act 1921** put into effect the main features of the 1918 Act.

The **Education Act 1944** (Rab Butler's creation) raised the school leaving age to **15 years**. This Act consolidated the so-called *Tripartite* system of schools.

Discussions from 1964 onwards looked to raise the school leaving age to **16** but this wasn't actually implemented until **1972**.

The **Education & Skills Act (2008)** sought to keep students in education to the age of 18, but left the official school leaving age as 16. The two years of 17-18 years of age were intended to keep young people who has not decided to stay in school or college full-time for advanced studies in at least one day per week of formal training.

Happy birthday NHS!



The UK's National Health Service came into being, effectively, on 5th July, 1948 – 75 years ago – after the National Health Service Act 1946 received royal assent on 6th November 1946. The Act came into action from 5th July, 1948 after considerable amount of Aneurin Bevan's (Minister of Health in Clement Attlee's Labour Party government), political efforts*. The Act created a system where each person resident in the UK would be signed up to a specific general practitioner (GP) as the point of entry into the system, building on the foundations laid in 1912 by the introduction of National Insurance and the list system for general practice. Patients would have access to all medical, dental and nursing care they needed without having to pay for it at the time.

The 1946 Act extended a system that provided free health-care to the employed (at the time, essentially males) to a service for everyone. Previously, men with families would have a medical support framework around them, their wives and children did not. It was this major shift to 'everyone' that the 1946 Act enabled.



* Many doctors were initially opposed to Bevan's plan, primarily on the grounds that it reduced their level of independence. The British Medical Association voted in May 1948 not to join the new service but Bevan worked hard to bring them on board by the time the new arrangements launched on 5th July 1948 knowing that without doctors, there would be no health service. Being a shrewd political operator, Bevan managed to push through the radical health care reform measure by dividing and cajoling the opposition, as well as by offering lucrative payment structures for consultants. At a dinner in late 1955 or early 1956 to celebrate the publication of the Guillebaud Report into NHS costs Bevan remarked to Julian Tudor Hart "ultimately I had to stuff their mouths with gold" about his handling of the consultants.

For a comprehensive history of the development of the notion of a Nation Health Service through the early 20th century, see:

https://en.wikipedia.org/wiki/History_of_the_National_Health_Service

Tour of Britain will soon be near!

This year's Tour of Britain cycle race will have 170km stage 4 in Nottinghamshire again on Wednesday, 6th September. This stage will start at Sherwood Forest Visitor Centre and will finish in Newark and loop through Worksop, Bawtry and Retford. Race timings will be published after our Newsletter went to press.

Editor

Amazon Parcels

Have you wondered why so many Amazon deliveries seem to come in over-sized packages? This is just one example: The little, red, package was in a protective paper inside the large box shown here!



This is an example of what is known in the trade as an **fba** or Fulfillment by Amazon package. Amazon provides shipping and follow-up services for businesses that sell their products but deliver them to Amazon who look after all of the delivery aspects. Hence standard-sizes packages such as this example.

Editor

THANK YOU TO



GLOBAL EVENT CONTRACTORS

OUR MAIN SPONSOR

RETFORD LIONS CLUB

Invite You To Our

RACE KNIGHT

With a Difference. **NO Films.**

Saturday 9th September 2023

7pm for first Race 7.30pm

Clarborough Village Hall, Main St Clarborough, Retford, Notts, DN22 9LN

Entrance £10 to Include

Beef or Veggie Pie & Pea Supper

Bring Your Own Drinks & Glasses

Tickets available from:

Mrs H.Campbell

01777 702 179



Thanks to our Main Raffle Sponsor



ARISE LADY HELEN

Thank you to our Eight Race Sponsors





Do you fancy making new friends?
Do you fancy a new challenge and learning some new skills?

Well, the Arts Hub on Retford's Canon Square has just the opportunities for you to do this.....
We are a Community Interest Company, supporting local artists and Makers, we are all volunteers.
Fancy joining our friendly team?
Contact us to talk about the opportunities we have or pop into the shop for a chat with one of our volunteers.

Contact Email; info@retfordartshub.com

We also have three classes for those who wish to join a group of people who enjoy learning and creating in a supportive atmosphere.

- ➔ Fridays 10:30 to 12:30 Angela's All things bright and beautiful for you and your home- learn to use our sewing machines. All materials supplied. Beginners and more experienced welcome.
- ➔ Saturday (1st and 3rd week of each month) . Creative sewing and garment making group using our sewing machines and equipment, bring your own project/materials. Beginners and experienced welcome.
- ➔ Saturday 13:30 to 15:30. 4 week courses learn to knit or crochet with Chris.



Booking for these workshops is essential by popping into our shop at 11, Churchgate, Retford DN22 6PA or email : info@retfordartshub.com

Watch out for our new Workshops by either looking at our posters in the window or by following us on;

Facebook-[@retfordartshub](https://www.facebook.com/retfordartshub)
Instagram-[@retfordartshub](https://www.instagram.com/retfordartshub)

Man is still the most extraordinary computer of all.
John F.Kennedy (1917-1963)

Clarbrough Village Hall for your next event?

Clarbrough Village Hall offers an excellent, flexible, venue for parties and other events:



We have a range of table sizes and enough chairs for large audiences. We also have a second, smaller, room available for separate bookings.

Kitchen facilities are also included along with easy access since this is a one-floor building with friendly entrance slopes as well as disabled toilet facilities. A large car park to the rear of the building is also available.

Access is from Clarbrough's Main Street – the A620 from Retford to Gainsborough, with entrance directly opposite the Kings Arms public house (DN22 9LN).

Hiring rates for regular users is £10 per hour and for one-offs, £14.50 per hour but with a special offer of just £45 for a 4-hour bookings which includes 1 hour for setting up and one hour for clearing up after the event.
For more information or to enquire about a booking, please contact our Bookings Secretary, Steve, on **07442 105 268** or email clarbroughvillagehall@gmail.com

Lifeline Sitter & Befriending Service

Carer Respite | Outings | Home Support | Socialisation

A local support service providing bespoke support packages for people living in the community.

We support older adults including people with dementia, parkinson's disease, those at risk of social isolation and frailty.

Families have their own named support worker and regular support packages from 2 hours to full days.

Please give Lesley a call on 07704 035757 or email lifelinesitterservice@outlook.com for more information.

www.lifelinesitterservice.co.uk

Retford Business Forum receives East Retford Charter Trustees Award

At the East Retford Charter Trustees annual Mayor-Making event, held in the Ballroom at Retford Town Hall on Wednesday 7th June 2023, Retford Business Forum Chair, Rick Brand, was presented with the East Retford Charter Trustees Award for 2022/23 by outgoing Mayor, Cllr Sue Shaw.



Photo: R S. Walker

The award was given “in recognition for outstanding contribution to East Retford and for the many years of service to the people of Retford.”

Rick Brand said “I was honoured to accept this award and am very grateful to the Mayor and Charter Trustees for their support. This award really recognises the efforts of the team at Retford Business Forum (RBF). We are all volunteers at RBF and share the same objective to promote the interests of the people, businesses, and organisations in Retford and its surrounding villages and area. We are not regularly funded by anyone and are always delighted to welcome new members, and volunteers.”

Retford Business Forum works in partnership with many local organisations, including Bassetlaw District Council, North Notts BID, Retford Charter Trustees and Retford Civic Society, and is very grateful to everyone who supports its activities.

RBF members include individuals, businesses, and organisations from in, and around, Retford. For information about membership, contact :

membership@retfordbusinessforum.org.uk or see www.retfordbusinessforum.org.uk

Retford Business Forum relies entirely on its members, donations, and grants, and is not regularly funded by anyone.

Local Church Services & Events

As ever, we are sharing services out among the Clays Group. In this list, a time any service in **bold type** means that service is in Clarborough church. HC is Holy Communion taken by Revd Mark unless otherwise stated.

- 6th August HC Sturton 10:30
- 13th Aug HC Wheatley 10:30
- 20th Aug Service at Leverton Windmill 10:30
- 27th August HC 10:30 Revd D Lewis.**
- 3rd Sept HC Bole 10:30, HC Littleborough 15:00, **Evening service 18:00.**
- 10th Sept Harvest Festival 18:00 Bole
15:00 Hayton Pet Service with Bishop Andy.
- 17th September HC 10:30**
- 24th Sept South Leverton HC 10:30
16:00 Sturton Barn Harvest - Revd Mark.
- 1st October 16:00 Harvest Festival with Revd Mark**
HC is 10:30 Hayton
- 8th Oct 10:30 Morning worship**
16:00 Hayton Harvest Festival,
HC Leverton 10:30.
- 15th Oct HC Bole 10:30,
Celtic HC Sturton 18:00.
- 22nd Oct HC 18:00**
- 29th Oct Joint HC Service at Wheatley 10:30**



Tues 31st October 18:30 will be Clarborough’s All Souls Service with Revd Mark. This is a chance to remember and honour those we have lost and to light candles in their memory. Please ring 07989 895 813 to give in names to be read out if you hope to be at the service.

- 5th November 10:30 N. Leverton dedication of the book of Remembrance,
16:00 Bole Evening Prayer with Revd Mark
- 12th Nov Remembrance Service 10:45**
- 19th Nov Hayton 10:30 HC.

Services for the run-up to Christmas to be decided later.

30th September Clarborough Harvest Ho Down, Tickets from J Palfreman, Church Lane

Games Evenings

Thurs 12th Oct at 15:00 Flog It Clarborough Style.

Tickets £5 includes a chance to bring along one item to be valued by our local auctioneer, and refreshments.

Watch out for the Steam Punk Christmas Fair.



The way I see it, if you want the rainbow, you gotta put up with the rain.

Dolly Parton (1946-)



Be the best you can be!

With the end of the Summer Term and the year, we begin to transition to the next stages of our lives, children move from reception to KS1 children move from KS1 to KS2 and our Year 6s will begin their journey to secondary school.

What a summer we have had we started with our fantastic sports day where the whole school competed in an



amazing array of races from sprints, long distance and traditional sack and egg and spoon races.



{Above} The following week KS1 had a fantastic visit to Butterfly House seeing lots of butterflies – up close! They also saw other animals and had a talk about 'mini-beasts'.

Then we held our fantastic festival Clarbfest. This was an amazing afternoon for everyone. The staff hired a DJ who filled the afternoon with party tunes. The children danced the afternoon away in the sun and even got glitter tattoos.



To end the year we had a fantastic result from our Year 6 cohort who achieved a SATs pass rate above the national average!



[Above] To celebrate their final days at Clarborough, Year 6 enjoyed a day out at Alton Towers. On Wednesday they performed 'I'm a Year 6 get me out of here!' to an audience of parents/carers and Governors - they were spectacular! The annual awards ceremony followed with our two most prestigious awards; the Jonathan Webster award for the outstanding sportsman in loving memory of Jonathan Webster which went to Molly Mettam and the Zain Beeharry award for model student in loving memory of Zain Beeharry which went to Luke Oxlade.

Just before term ended, KS1 pupils took themselves on a quick-trip to Hawaii. After making their own passports (!) and arriving with suitcases, they set off...



Everyone is looking forward to the start of the new school year in September and the start of our next journey.

Clarborough & Welham Community website

Our note on the facing page regarding Wikipedia's entries for Clarborough and Clarborough & Welham highlight how our website (www.clarborough-welham.org.uk) is having fewer visitors over recent months, probably because the Wikipedia entries on the likes of Google's search listings appear higher on their lists.

Regular visitors to our community website will have realised that (currently) 256 pages contain a vast array of local – and not-so-local – news and information streams that really ought to be visited fairly regularly. News items from Bassetlaw District Council and Nottinghamshire County Council are just a start with links on our home page.

The vast array of information that is updated daily includes (just for example) Tour of Britain latest, Retford Theatre news, Citizens Advice support, local weather reports, BCVS weekly Bulletins, Retford Big Market days... the list just goes on and on!

Editor



**Nottinghamshire
Wildlife Trust**

Nottinghamshire Wildlife Trust highlights urgent appeal for help to raise £45,000 to reverse the decline of the county's vital wetlands

Over the past 100 years 90% of the UK's wetlands have been lost and rising temperatures, coupled with the potential future loss of coastal habitats, mean that inland wetlands are more important for wildlife than ever.

The charity, which is marking its 60th anniversary this year, needs support to carry out important habitat work at Attenborough Nature Reserve near Beeston, Besthorpe Nature Reserve west of Newark, Idle Valley Nature Reserve near Retford and Skylarks Nature Reserve at Holme Pierrepont. These four sites cover more than 1700 acres – over 50% of the land in the charity's care.

Speaking about the appeal, Chief Executive Paul Wilkinson said: "Since our formation in 1963, the protection of wild green spaces has been central to our work and whilst we also care for fine ancient woodlands, meadows and areas of heathland, most of the land in our care is areas of restored gravel pits, where we have been able to nurture nature's recovery on a grand scale. Caring for such large areas of wetland wildlife presents tremendous opportunities – but also real challenges, which is why we've launched our Wetlands for Wildlife appeal."

The four sites in need of support are home to some of the county's most iconic and threatened wildlife from bitterns to otters, marsh harriers and turtle doves. Whilst managing sites on the scale of these jewels offers the potential for ambitious habitat restoration, their sheer size presents ongoing challenges. Alongside the difficulties of maintaining water levels, the single biggest challenge, shared with all wetland managers, is halting the inexorable establishment of trees and scrub in areas of reedbed and wet grassland. If left unchecked on wetland sites, scrub encroachment leads to loss of feeding and nesting areas for wetland birds such as lapwing, redshank and snipe – and ultimately results in fragile wetland areas drying out.

Paul continued: "These wonderful wetland sites have long provided havens for both wildlife and people, but we need support to ensure that they continue to act as refuges for wintering wildfowl such as tufted duck and summer visitors such as sand martin. Through careful management, harvest mice will be given the opportunity to nest in reedbeds and oystercatchers provided opportunities to feed on the sites' shores come spring."

Donations to the appeal could support:

- Removal of encroaching willow scrub to create vital open areas for ground nesting birds.
- Management of reedbeds to help species including harvest mice, otters and bitterns.
- Removal of scrub from wet grassland to improve habitat for declining species including lapwing, snipe and redshank.

Paul added: "Here in Nottinghamshire, we are blessed with a wonderful network of restored former sand and gravel quarries throughout the Trent Valley. These four reserves present some of the best opportunities in the county to get close to nature throughout the year. We are working to improve habitats year on year to make them even better places to see and experience nature on your doorstep. Many families have visited for generations and during the challenging lockdowns of 2020 and 2021 these much-loved sites acted as lifelines for local communities, providing familiar refuges for regular visitors and being discovered by thousands of new people."

As we face up to the combined climate and ecological emergencies, these four sites are the physical embodiment of the Trust's commitment to nature recovery. With public support we can continue to improve habitats year on year to make the reserves even better places to see and experience nature on your doorstep."

Details of how to support the appeal can be found at nottinghamshirewildlife.org/wetlandappeal

The appeal runs until the August 31st

Erin McDaid
Head of Communications & Marketing
Nottinghamshire Wildlife Trust
0115 958 8242
Mobile: 07734 573 862
www.nottinghamshirewildlife.org

Editor's footnote:

- The Nottinghamshire Wildlife Trust, a registered charity, manages dozens of nature reserves throughout the county. It advises local authorities, community groups and landowners on nature conservation issues, and makes a major input into decision-making on planning matters and other
- The Trust is part of a nation-wide network of local Trusts which work to protect wildlife in town and country - The Wildlife Trusts. The Wildlife Trusts now boast over 900,000 members. For more information, please see our website:

Beware of Wikipedia – sometimes!

Wikipedia can be an invaluable resource on almost any topic. However, recently we have discovered that Wikipedia has been copying a lot of information from our community website (www.clarbrough-welham.org.uk) and publishing it as *Clarbrough and Welham*.

Crucially, web browsers list the Wikipedia entry before our community site if you only search for *clarbrough* rather than *clarbrough & welham* which has resulted in a significant fall in our website's visitors stats! Not only that – the Wikipedia links do not go to our website but just 'lift' parts of it, so visitors don't see all of the up-to-date information crucial to our community site.

So, if you are looking for your community website go to that shown above and not the wikipedia entry or read more in our little article opposite.

Editor



**Goacher's
pick you
own
History!**

George Goacher moved to North Wheatley from Carburton when he married in 1772. He bought land in the village which he then farmed. He had no children, so his land passed to his nephew George. It was George's son, George who is credited with starting the growing of soft fruit in the Wheatley area, around 1840 -1850. His tombstone in South Wheatley states 'a benefactor to this district through introducing a commercial culture of small fruits. This George was Oliver's (present owner) great great Uncle.

In 1897 he bought 20 acres of land from Lord Middleton who needed to raise money to build a bridge over the Trent. He mortgaged this land to 4 local young men, including his nephew William (Oliver's great grandfather). This land is on the A620, on the s bends, on the outskirts of Wheatley, you can still see the 2 matching houses that William and his cousin Frank built in 1903.

The picture below (c.1900) show the pickers picking strawberries which were grown between rows of blackcurrants. The child in the middle of the picture was Percy Goacher (Oliver's Grandfather)



William Goacher (1862-1948) used to deliver strawberries to Welham sidings or Sturton Station to go on the train to Sheffield. See photo above right of William about to deliver. We still send strawberries to Sheffield wholesale market, but they are now collected in a van.

In 1973 Graham & Judith (Oliver's parents) decided to start pick your own strawberries. In those days it consisted of a set of scales on a trailer at the edge of the field and lasted 2/3 weeks. Now we start in May with Strawberries and carry on with a wide variety of fruit finishing at the end of October with pumpkins, apples and pears. The farm has passed down the generations and is now run by Oliver and his wife Helen.

Altogether we now farm about 70 hectares, approx 54 hectares of which are arable crops. We grow just over 16 hectares of fruit, including strawberries, raspberries, currants, cherries, plums, apples and pears. We sell this in

our farm shop at North Wheatley, either ready picked or for customers to PYO.

The reason Wheatley strawberries taste so good is that the soil contains a rare combination of trace elements producing a fantastic flavour. We are now the only farm to grow Wheatley strawberries in the traditional way.



We also sell our own honey, from the bees in the orchards, homemade jams, chutneys, fruit pies and other local products.

We also supply some local businesses, including Thaymar Ice Cream.

We attend farmers markets in Nottinghamshire & Lincolnshire throughout the year, with our produce.

Helen Goacher

South Street Storage

Offers affordable, secure, indoor storage solutions meeting both commercial and domestic needs.

Various sized units available.
Close to Retford town centre. Easy access just off A1.

Suitable for:

- General household items
- Sports equipment
- Student storage
- Documents storage
- Bicycle storage
- Stock storage



Services: Pickup and delivery options available

Open: Mon – Fri 10:00-16:00
Saturday 10:00-14:00

01777 702 779 / 07550 002 242
southstreetstorage@gmx.com



Your Parish Pasture

The Open Green Space

All users of the footpath across the **Parish Pasture** will now be aware that the Open Green Space to the west of the main Public Right of Way has been roped off in an attempt to persuade all users not to encroach on the Wildflower (or Hay) Meadow developing there. There is still access to the track along side the hedge which separates the Open Green Space from the Mayflower Orchard and the Allotments. There is also access to the eastern side of the Open Green Space.

“Why has the rope barrier been put in?” some people are asking. Part of the original idea for the **Pasture** was to turn it all into a Wildflower Meadow. For a number of reasons, which were not apparent at the start, this has not proved possible. The work for the Wildflower Meadow is to be concentrated on the roped off area.

A Hay Meadow is an area where Hay can be cut and taken off in late Spring. Modern farming techniques and the requirements of both farmers and buyers of Hay has led to any true Hay Meadow being eliminated from most farms. Ours, we hope, will develop into a true Hay Meadow, which should be full of Wildflowers.

It is a long-term effort to ensure that the Wildflowers can develop and the number of different species can flourish to give glorious colour and variety.

2023 is showing us that in the roped off area we are well on the way to our aim. There are at least 25 different identified flower species on that Meadow! Some very common (eg Buttercup), some less so (eg Black Medic). That is from a zero start just 5 years ago. I don't think that is a bad effort! There are also other species which are there but have yet to be positively identified. To see all the different species, please read the various posters now around the Pasture to explain which flower is which. If anyone out there has a particular interest and expertise in identifying Wildflowers then please get in touch!

This wide variety of flower types is attracting an equally wide variety of Moths, Butterflies, Bees and Damselflies. Someone asked me why does this matter? Over the last 50 years – yes only 50 years – many insect species have all but disappeared. Think of your car windscreen! Many of you will remember it getting ‘splattered’ with insect bodies as your car collided with them, sometimes they had to be washed of as you drove. Does this happen now? No! This tells us of a catastrophic drop in insects. Insects which pollinate many of our crops – it is not just Bees which do this! Insects which often prey on each other in order to keep a balance. Insects which provide food for Bats, small Mammals and many Bird species. How many birds do you see on your bird feeders or just ‘around’? Far fewer than there used to be. How many Swallows have you seen this year? Swallows feed on insects.

This is why the development of our **Pasture** is so important – if is helping in it's small way to retore the

balance of nature. It is also providing an excuse for getting out and about, for us to become more active and to be able to see something attractive and useful. To keep us all healthier.

Please come along and enjoy your **Parish Pasture** but help it to develop *by leaving it alone and staying out of the Wildflowers and keeping your dog out also!*

If you see people in the Wildflower Meadow they will be working, treading carefully, maybe removing invasive species, maybe counting or identifying Wildflowers and Grass types. The modern Wildflower Meadow has to be carefully managed. In days gone by they just grew naturally!

If you would like to help, then please contact the Parish Council on clarandwelpc@yahoo.com.

Paul Willcock
Parish Councillor
Clarbrough & Welham Parish Council

School holidays to July, 2027 – a very useful resource!

Have you realised that Nottinghamshire County Council always publishes school holidays for several years in advance? Currently these run all the way through to July, 2027.

You will also have noted that costs of holidays always climb for these holiday periods so if you do not have children of school ages*, planning your holidays to avoid these published dates can make a lot of sense! Your don't even need to go to Nottinghamshire's website – just go to your community website at www.clarbrough-welham.org.uk and look for a bright red link just over halfway down the site's homepage.

A word of caution, however, for those with school-age sons and daughters – if you take your children on holiday during school term-times, you will almost certainly have to pay a fine!

You are strongly advised to consult Nottinghamshire County Council as this could apply to you. Visit for details : <https://www.nottinghamshire.gov.uk/education/school-holidays-and-closures/holidays-during-term-time>

Editor

Believe you can and you're halfway there.
Theodore Roosevelt (1858-1919)

ReNew
Carpet & Upholstery Cleaning

- High Powered Portable Equipment
- Commercial & Domestic Services
- Stain Removal / Reduction
- Satisfaction Guaranteed
- Dry in Hours NOT Days
- 'One Off' or Regular Cleans
- Fully Insured & Experienced
- CRB Checked Operators

Please Call Mob: **0755 000 2242**
 Tel: **0177 770 2779**

"The bitterness of poor quality service lingers long after the sweetness of price is forgotten"

RETFORD HERITAGE DAY

SATURDAY 9TH SEPTEMBER 2023

Programme of Events

ART EVENT 10am to 4pm in Retford Town Hall. Come and take part as 25 invited local artists demonstrate their work. Children welcome.

10am OUTSIDE TOWN HALL

Opening Ceremony by Mayor Dan Henderson and Town Crier for the day David Bean. Short performances by Retford Community Singers and Dukes Dandy Clog.

10.45am TOWN HALL COUNCIL CHAMBER

Retford Community Singers Workshop led by Janet Wood

11am ST SWITHUN'S CHURCH

Retford U3A Recorder Group **There will also be organ recitals at other times during the day**

12.30pm TOWN HALL COUNCIL CHAMBER

Dean Geary and Jo Thorpe – local poet and songwriter

2.00pm ST MICHAEL'S CHURCH

Retford U3A Recorder Group

2.00pm TOWN HALL COUNCIL CHAMBER

Talk by Local author Stephen Booth. Free event. Tickets available from Retford Arts Hub, Bassetlaw Museum or on Eventbrite. Limited tickets – apply soon.

VENUE TOURS

Available on the hour at the **Masonic Hall** and **Trinity Hospital**. No booking needed.

Book **Majestic Theatre** tours on 01777 706 866

Retford Station tours available.

Sloswicke's Almshouse discover its fascinating history.

SETH ELLIS TRIPS

Book on the Chesterfield Canal Trust website.

EXHIBITIONS at: Retford Library Retford Arts Hub
Goodwin Hall

Free minibus with drop-off points at St Michael's church, Trinity Hospital, Retford station and Chesterfield Canal albert road. Departures from outside Bassetlaw Museum every half hour from 10.30am

REFRESHMENTS AVAILABLE AT: Trinity Hospital, Denman Library, St Michael's Church, St Swithun's Church, Masonic Hall, Goodwin Hall, The Old School House, Retford Arts Hub and the Buttermarket.

Look out for Rattlejag Morris Dancers and Dukes Dandy performing throughout the town during the day.

Always remember that you are absolutely unique. Just like everyone else.
Margaret Mead (1901-1978)

Ordsall Live & Local



Ordsall Parish Hall in Retford has 3 exciting and varied shows lined up for 2023/24 under the Live and Local banner, plus an additional show featuring the return of the ever popular Jonny & Lynette.

Friday 6th October is the start of the season with folk musician **Ruth Angell**. Her violin/fiddle, voice and guitar combine to produce beautiful melodies and harmonies, with something for everyone.



On **Friday 24th November**, sparked by the discovery of a series of letters from his father in Nigeria to his mother in Wales, **The Gods Are All Here** is a moving, funny and warm-hearted, one-man performance from first-class storyteller, **Phil Okwedy**

Jonny & Lynette return on **Saturday January 27th 2024** with their special brand of traditional country music and banter. Early booking is advised!

The final show **The Allotment Project** on **Saturday 16th March** combines documentary, dance & theatre to explore allotments and the green-fingered communities around them. Gentle, human and humorous, the performance connects audiences with the joy of growing plants, food and relationships across all four seasons.

All shows are at 19:30. As usual an (optional) light meal with a veg option will be served in the interval of each performance.

Tickets for all performances can be reserved by contacting Peter & Shirley Thomas on 01777 706 433 or 07951 253 343, or email thomas_peterf@hotmail.com

Bassetlaw ACTION Centre

MAKING A DIFFERENCE THROUGHOUT BASSETLAW

Bassetlaw Action Centre, Canal Street, Retford, Nottinghamshire, DN22 6EZ

HOME SUPPORT WORKERS REQUIRED

£10.56 per hour plus £1.27 per hour holiday allowance.
Higher rates for weekends and bank holidays.
Own Transport Required as work is throughout Bassetlaw.

The Home Support service aims to enable individuals to remain independent in their own home and provides help and support covering a range of domestic services including general cleaning, shopping, correspondence, befriending and assisted visits.

If you feel that you have the drive, commitment and life experience to bring to this demanding but highly fulfilling role this is an exciting and rewarding opportunity, which offers the chance to make a difference within the community and to people's lives.

Application packs can be downloaded from our website www.bassetlawactioncentre.org.uk or are available from The Bassetlaw Action Centre, Canal Street, Retford, Notts, DN22 6EZ. **Tel: 01777 709 650**

Bassetlaw

ACTION

Centre



MAKING A DIFFERENCE THROUGHOUT BASSETLAW



Bassetlaw Action Centre, Canal Street, Retford, Nottinghamshire, DN22 6EZ

Investing in Volunteers is the UK Quality Standard for all organisations which involve volunteers in their work.

Bassetlaw Action Centre has recently been notified that it has successfully achieved the Investing in Volunteers UK quality standard for excellence in volunteer management.

Achieving this standard confirms how the Action Centre values the work and support of its volunteers to enhance their own experience and best serves to meet the need of its service users. This has been a yearlong process of rigorous assessment against the IIV 46 quality standards.



Investing in Volunteers is unique in that it is the only standard that focuses on volunteers. It is based on the following six quality areas:

1. Vision for Volunteering
2. Planning for Volunteers
3. Volunteer inclusion
4. Recruiting and welcoming volunteers
5. Supporting volunteers
6. Valuing and developing volunteers

The comment from the IIV assessor on the Action Centre was *'It is evident both from this self-assessment and our discussions in the (virtual) workshop that volunteers are at the heart of what you do. They are well looked after within BAC with great care and attention given to proper management of them.'*

The whole process has highlighted the great BAC team spirit of the staff, volunteers and trustees, with their commitment, hard work and support to achieve this prestigious recognition of excellence.

A grassroots community initiative that aims to support Men's Mental Health by encouraging men to open up, feel able to talk to other men and reduce social isolation whilst enjoying a nice walk in beautiful surroundings.



To book a place please email goga@actioncentre.org.uk or visit www.menwalktalk.co.uk/bassetlaw

We have many different volunteering roles at Bassetlaw Action Centre including:

- Driver
- Administrator
- GOGA Activity Supporter
- Befriender
- Minibus driver

For more information, please call:
01777 709 650

VOLUNTEER



GOGA aims to provide support to encourage greater activity in a genuinely inclusive environment, helping to build friendships, maintain health, increase independence, reduce stress and boost self-esteem.



If you would like some support to become more active, please call our team on:

01777 709 650 or email goga@actioncentre.org.uk

**For any enquiries or bookings
phone 01777 709 650**

The Staying Well Programme is a Long Term Health Condition self-management course to help people living with long-term conditions maintain their health and improve their quality of life. The course led by a tutor who is living with a long-term health condition.



It is a FREE 6-week course 2.5 hours a week either face-to-face or virtually via Zoom.

For more information or to find out when the next course is due, please phone:

01777 709 650



Clarbrough & District W.I.

As we go to press the WI have just celebrated their 62nd birthday when 10 members enjoyed afternoon tea at the West Retford Hotel.

In July we enjoyed meeting our friends from Hook WI in East Yorkshire who visited us on the 10th to enjoy a card making workshop and refreshments.

25th July will see us enjoying an informal get together for coffee at the Bird's Nest coffee shop at Hall Farm, Weston. This starts at 10.30am.

There will be no meetings in August but in September we look forward to greeting Ralf Schweinem who had to postpone his visit in February due to ill health. Ralf will speak about the construction of the Berlin Wall which he witnessed as a child.

Due to the wishes of our members, we have moved our meetings to the afternoon starting at 2pm, so if like us you do not wish to be out and about on dark winter evenings (yes, they will be here before we know it!) come and join us, make new friends and enjoy the companionship of like minded women. We look forward to seeing you.

The programme for the rest of the year will be:
 9th October - Hedgehog Rescue by Sue Smith
 13th November - Just Gems by Hilary Chapman
 11th December - Member's Christmas lunch

There will be no Senior Citizens' Christmas Party this year. We are now such a small group and some of our members are not in good health therefore we are sad to say we are discontinuing this event. We were particularly upset that at our Coronation Afternoon Tea when we had 12 bookings where the guests did not turn up and in some cases had no explanation for their absence. Perhaps some other group in the village would like to take over running the Christmas party.

Any further information can be had by ringing:
 Lucy on 01777 870 054 or Lesley on 07967 191 007

Lucy Richardson

So humans really are changing our planet!

Geologists recently announced a big development towards defining a new Earth's epoch dominated by humanity's physical influence on our planet. It is proposed to name this epoch the *Anthropocene*.

Although this proposed naming still has a few administrative hurdles to pass before it is finally adopted by the International Union of Geological Sciences, opinion is moving to defining the anthropocene's beginning as 1950.

This represents the beginning of unambiguous evidence in the Earth's rocks and sediments that humans have been having measurable effect.

Maybe this will also encourage more organisations to get to grips with the mounting range of negative effects that humans are causing.

Editor

Emotive Language in newspaper reporting

What is it?

Employing emotive words in news writing is one of the most common strategies in today's newspaper reporting. Emotive words are usually used in writings to evoke readers' emotion on the subject. It is important for a reader to be aware of this phenomenon so they would not be easily manipulated by editors in news articles trying to get readers to identify with their points of view. Examples have included: PM **slams** brakes to avoid second Covid-19 wave; Citizens' **fury** at Beirut explosion.

Emotive words

- Adjectives - appalling, wonderful, magical, tragic.
- Abstract Nouns - freedom, pride, justice, love, terror.
- Verbs - destroyed, vindicated, saved, betrayed, adored.
- Emotive Adverbs - angrily, defiantly, proudly, beautifully.

Example 1:

- **Non-emotive version:** Another person in the bar was injured by the man's glass.
- **Emotive version:** An innocent bystander suffered facial injuries when the thug launched his glass across the bar.

Example 2:

- **Non-emotive version:** The government will reduce interest rates.
- **Emotive version:** The government will slash interest rates.

Example 3:

- **Non-emotive version:** Mr Smith was attacked by Mr Jones for two minutes.
- **Emotive version:** For what seemed a lifetime, Mr Smith was subjected to a vicious, cowardly assault by the unemployed, steroid-pumped monster.

Editor

The more sand that has escaped from the hourglass of our life, the clearer we should see through it.

Jean Paul (1763-1825)

Do you require any landbased training?

North Notts Training Group

"Cost effective professional training for a safe and efficient tomorrow"

Health & Safety, Pesticides, Chainsaws, Fork Lifts, First Aid, Abrasive Wheels, Vermin Control, plus e-learning



info@nntg.co.uk
 07855751689
 www.nntg.co.uk





**LINCS & NOTTS
AIR AMBULANCE
SAVING LIVES EVERYDAY**

The Lincs & Notts Air Ambulance delivering life-saving treatment, day and night.

At a time when every second counts, the arrival of the iconic yellow helicopter of the Lincs & Notts Air Ambulance (LNAA) really can mean the difference between life and death.

Covering both Lincolnshire and Nottinghamshire, last year the LNAA team were called to 1,610 potentially life-saving missions. This year is set to be equally as busy with the crew responding to 147 missions in April 2023 alone. The crew are called to the most serious incidents ranging from road traffic accidents to agricultural, horse-riding and other sporting incidents. The doctor-paramedic team are highly trained, able to administer advanced pain relief, carry out enhanced life-saving medical procedures and give blood transfusions. This level of care and the speed at which the pilots can get to patients and get them to hospital is crucial. This is especially so when patients need to be taken to a Major Trauma Centre, the nearest being either at Nottingham or Hull. In some cases, this really can make the difference between life and death.

LNAA operates a 24/7 service with the helicopter able to take to the skies from 7am until 2am the following morning. After 2am, the critical care car takes over, ensuring that the equivalent of an A&E department can be brought to an incident whatever the time of day.

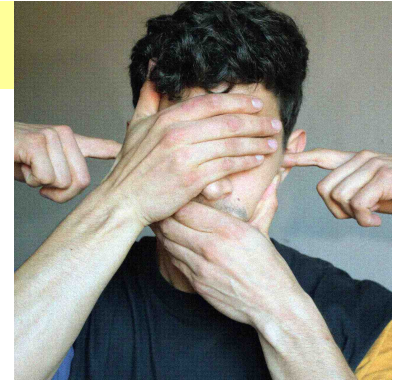


But this amazing service comes at a price. For each mission costs on average £4,000. As a charity, the Lincs & Notts Air Ambulance receives no direct government funding and is not part of the National Health Service. It relies solely on the generosity of the hundreds of volunteers, supporters and public donations to keep its helicopters flying and Critical Care Cars on the roads.

For more information on the Lincs & Notts Air Ambulance and to discover how you can play your part in helping keep this treasured emergency service operational, why not take a look at their website: www.ambucopter.org.uk or their logo at the top of this article which can be found of the homepage of Clarbrough & Welham Community website.

Texting in emergencies

The following instructions were originally composed for folks who are either hard-of-hearing or deaf but can be really useful for everyone in emergency situations in that messages can be brief and also if the phone is low on battery life or if signal strength is poor. Read on...



Deaf people can text emergency services, but only if your phone is registered for the service in advance. Don't wait until you need to call, it will be too late - do it now !

How to register for 999 text messages

1. On your phone go to Contacts/phone list...
2. Enter *Police* as name and *999* as phone number.
3. Press Save.
4. Then simply text 'register' to the Police contact.

They will reply with a message telling you more about the service.

When you have read their message reply with "yes". Shortly afterwards you will get another reply message. This one will say you are now registered - or tell you there is a problem and how to solve it.

Hopefully you will never need to use the next part, but in an emergency:

Information needed in a 999 text

1. **Do you want fire, police or ambulance?**
2. **In just a few words, what is happening?**
3. **Where is help needed?** Give the full address if you can, or a street name and landmark. Make it easy for the emergency services to find you.

When to use 999 text (or 999 generally) :

- Life is at risk
- Crime/trouble is happening now
- Someone is injured or threatened
- Person committing crime is near
- There is a fire or people trapped
- You need an ambulance urgently

Editor

Clarbrough Post Office



Opening hours:

- Monday:** 09:00-12:30
Tuesdays: 09:00-12:30
Wednesdays: Closed
Thursdays: 09:00-12:30
Fridays: 09:00-12:30

All usual main P.O. services

Halford Room, Clarbrough Village Hall
 Main Street, Clarbrough, Retford, DN22 9LN

If you have any queries, do not hesitate to contact:
 Michael C.Carnall 07836 375 808 / 01427 884 469
michaelcarnall@yahoo.co.uk

Science without religion is lame, religion without science is blind.
Albert Einstein (1879-1955)



India is overtaking China to become the world's biggest population

Demographic data from the United Nations Population Fund's (UNFPA) *State of World Population Report, 2023* estimates that India's population, by the end of 2023, will be 1.4286 billion (1,4286,000,000) compared with China's 1.4257 billion.

For comparison, USA comes third at 340 million (0.34 billion) although the European Union has a much bigger overall population (447 million) whereas the UK's population is around 67 million.

Although India and China will account for more than one-third of the estimated global population of 8.045 billion, the population growth in both Asian giants has been slowing, at a much faster pace in China than in India.

Reporting it yields more resources!

Recent meetings have emphasised that the more people who witness **and report** antisocial or illegal activities, the more resources authorities deploy in that area! So, don't just moan about 'too few police here', report all examples of bad behaviour to them.

Coming soon!

- 9th September: Retford Heritage Open Day – see pages 2, 6 and 20 of this issue for details.
- 16th September: Retford Big Market Day and cheese festival.
- 5-8th October: Beer Festival at Beer Under the Clock.
- 14th October: Clarborough & Welham IT Group starts its inaugural Ubuntu Linux classes.
- 20-22nd October: Retford Comedy Festival.
- 16th November: Rotary Victorian Lunch & Market at Ye Olde Bell, Barnby Moor.
- 18-19th November: Babworth Arts Festival.
- 26th November: Retford Christmas Market.
- 10th December: Rotary Santa Fun Run.
- 14th December: Illuminate/late night shopping.

Further details of the run-up-to-Christmas events will be in our Winter 2023 Newsletter.

Recent local Police Reports

These are usually very extensive, but a few key items from the July, 2023 Report to Retford Business Forum include: In June they received 2703 emergency (999) calls with shop thefts being the single largest category.

There was also a general increase in antisocial behaviour although this largely in residential areas rather than town centres. That referring to young people in Retford seems to have calmed.

There has also been reports of counterfeit £20 Scottish notes in circulation.

Are you looking for a job?

Visit our community website (www.clarborough-welham.org.uk) for latest local job opportunities and also links to a wide range of support organisations to help you get a job or provide support when at work. These latter organisations include:

- Building Better Opportunities (BBO)
- New Start
- Good Work
- Towards Work
- Way to Work

Clarborough Primary School will re-open after summer holidays on Tuesday, 5th September, 2023.

Newsletter editorial deadlines

**30th October (Winter issue)
8th January, 2024 (Spring issue)**

Clarborough & Welham Parish Council Meetings

**11th September
23rd October
27th November
8th January, 2024**

Meetings open 19:00 in Clarborough Village Hall

Agendas are always posted at least a week in advance on notice boards and on our community website where you will also find approved Minutes and meeting dates through to January, 2024.

Newsletter Advertising rates for a whole year of four consecutive issues

Full page	£125.00
Half page	£75.00
Quarter page	£45.00
This size	£25.00

**Contact Greg (01777) 700 918
clarboroughwelham@gmail.com**

**Special rates for 'one off' insertions
Yet again, our greatest thanks go to our tireless (!) team of volunteer distributors.**