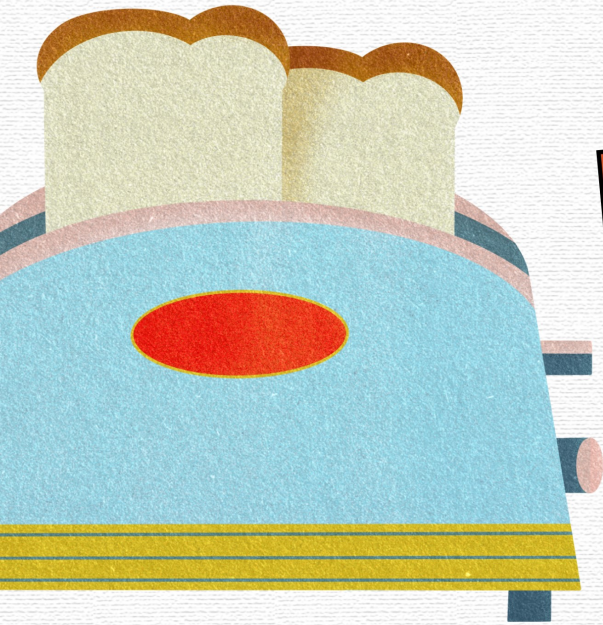


# BREAKFAST CLUB PROGRAMME

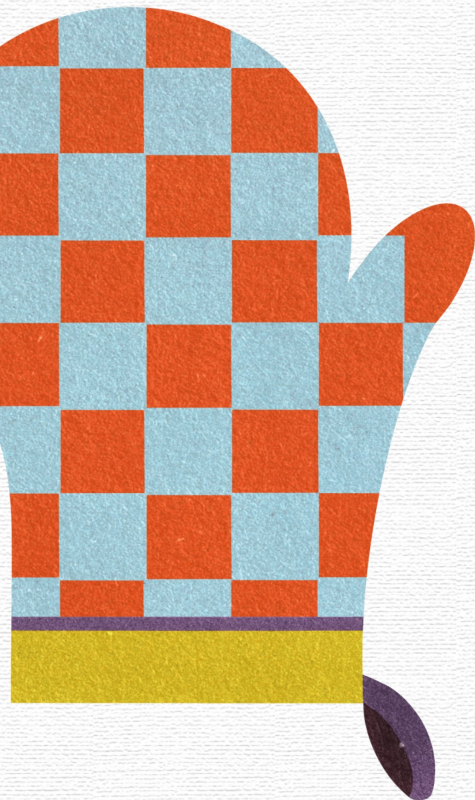
*Starting your morning on  
the right foot can set the tone  
for the rest of the day.*



## FRUITS



**MILK  
JUICE  
WATER**



# More information



*on eligibility*



*how to apply*

The National School Breakfast Programme (NSBP) is funded by the Department for Education and delivered by Family Action to support schools in England to provide children with a healthy breakfast at the start of the school day.



## Links

[National School Breakfast Programme - Family Action](http://family-action.org.uk)  
([family-action.org.uk](http://family-action.org.uk))

[Magic Menu: School Breakfast Options - Magic Breakfast](#)

[Breakfast Clubs \(greggsfoundation.org.uk\)](http://greggsfoundation.org.uk)

[Resources for schools | Kellogg's \(kelloggs.co.uk\)](http://kelloggs.co.uk)

## Contact

Nimisha.Patel@nottsc.gov.uk



**Nottinghamshire  
County Council**

