

# **Clarborough & Welham**

## ***Bassetlaw Community Newsletter***

Quarterly: Winter 2024

**Clarborough Volunteers on Tuk Tuk Challenge in Kashmir**  
**Local Christmas events**  
**Bassetlaw Museum's Roaring 20s**  
**A620 Welham repairs**  
**Irish Potato Famine & Ottomans**  
**Retford Partnership Board**  
**Chesterfield Canal Plaque**  
**Parking Scams**  
**Citizens Advice Pensions**  
**and much, much more!**

© 2024 Clarborough & Welham IT Group with generous support from Clarborough & Welham Parish Council and distributed by our tireless team of volunteers.

Material published in this Newsletter does not necessarily represent opinions of the Editor. Material submitted without full contact details will not be published. All publication decisions remain the responsibility of the Editor alone.

Visit our community website: [www.clarborough-welham.org.uk](http://www.clarborough-welham.org.uk) for much, much more!



*To us, it's personal*

## High Quality Home Care

At Home Instead we say no to one-size-fits-all care. Our Care Professional will be matched with you, will take time to get to know you, and will build a trusted relationship to ensure that your care and support is personal to you and carried out in the way you want, to assist your independence. Each visit is a minimum of one hour to ensure you get the best care for you.

### COMPANIONSHIP

Companionship Care can:

- Help you or your loved one to keep active
- Make sure you or your loved one have company and someone to socialise with
- Help to build confidence in going outside the home
- Encourage participation in activities inside and outside the home
- Help families take a rest from caring with peace of mind



### PERSONAL CARE

We understand that it can be an unsettling time when daily living activities such as personal hygiene, dressing and personal grooming become a struggle. Our personal care is:

- Is dignified and respectful
- Maintains your preferred routine and lifestyle
- Takes place in your own home in familiar surroundings
- Gives peace of mind that your loved one is being cared for
- Helps families take a rest from caring
- Enables your loved one to remain living at home.

### HOME HELP

Home care means:

- You don't have to worry about the housework
- Helps to keep your home clean and tidy
- Means you can socialise with your loved one rather than doing their housework
- Gives you companionship
- Gives peace of mind that someone is checking in with your loved one when you are not there.



Let's have a chat to see how we can help

**01777 712629**

**[WWW.HOMEINSTEAD.CO.UK/RETFORD-GAINSBOROUGH](http://WWW.HOMEINSTEAD.CO.UK/RETFORD-GAINSBOROUGH)**





## Bassetlaw Looking Forward

In June 2022, Gamston Airport was announced as a future UK centre of excellence in vehicle technology research and safety testing. Since then, Bassetlaw District Council has successfully received £18m for the redevelopment of Worksop town centre, £3.4m from the UK Shared Prosperity Fund, the highest in Nottinghamshire. And most significantly, Bassetlaw has been announced as the future home of the UK's first prototype fusion energy plant, a multi-billion-pound project which will see the West Burton power station site turned into a high-end research, development and business centre in fusion and green technologies, creating thousands of high-skilled jobs and apprenticeships.

While these are all great stories in themselves, together, they represent a rare opportunity to do something special – to transform Bassetlaw into a hub of new technologies, to regenerate our town centres in the process, and to genuinely improve the opportunities and life chances for Bassetlaw residents of all ages and backgrounds. This can be done at the same time as promoting greener and more sustainable ways of living and 'doing business'.

It was in this context, in December 2022, that the District Council unanimously approved the development of a new vision for Bassetlaw to 2040. As an ambitious Council, Bassetlaw seeks to maximise the return on these investments; to secure more funding and inward investment to ensure that the district, as a whole, benefits from the planned transformation. The Council is committed to making this happen and to taking its employees, Bassetlaw residents and businesses, and future investors on this journey in a fair, transparent, and consultative manner.

To make the most of this unique opportunity, we have started to set out a clear set of priorities that will enable resources to be focused where they will have the biggest impact. District Council's cannot do everything themselves; and by publishing a clear statement of intent and our vision for the future, we hope that it will inspire partners from all walks of life to join us on this journey. The time between now and 2040 will be a defining period for Bassetlaw. Together, we can do something that will radically change lives.

**Editor's footnote:** Read the whole of Bassetlaw District Council's Vision 2040 by visiting Clarbrough & Welham Community website – see bottom of front cover. BDC's Vision is about halfway down the website's home page.

## Bassetlaw Museum's change of Curator

After 20 years caring for the district's heritage, Bassetlaw Museum curator Samantha Glasswell has announced she's stepping down from the role and also introduced her successor, Mike Galer.

A lot has changed in the years since she was appointed as curator and Samantha says she has tried to put the museum at the heart of the community, not just at its home in Retford, but across the district.

"Over the years we have discovered so many fascinating stories about the people who lived in Bassetlaw from

earliest times to the present day. We are connected to those people by the objects they have left behind," said Samantha.

"Working in a museum can be very emotional, I've been moved to tears and jumped up and down in excitement, because of the things I've been privileged to study and witness."

Among her proudest achievements is being involved in the team responsible for getting the Worksop Torso properly displayed again at its forever home at the Aurora Wellbeing Centre in Worksop, something she describes as extremely satisfying.

"I've loved working with local people and enjoyed going out and meeting people across the district. I just want to say thanks for putting up with me, I've had a lot of fun along the way.

"From groups including the Friends of Bassetlaw Museum and The Civic Society to volunteers and residents, everyone has been very supportive of Bassetlaw Museum and whatever we have wanted to do, and I wish it every success for the future."

Cllr Steve Scotthorne, Cabinet Member for Identity and Place said: "Samantha has been part of the museum for such a long time, and she will be sorely missed by volunteers and visitors alike. I wish her well for the future as she embarks on a new challenge."



[Above] Samantha Glasswell and Mike Galer on the steps of Amcott House, Bassetlaw Museum's home in Grove Street, Retford.

*'If you want the present to be different from the past, study the past.'*

**Baruch Spinoza (1632-1677)**

## Clarbrough Post Office

Opening hours:

**Monday:** 09:00-12:30

**Tuesdays:** 09:00-12:30

**Wednesdays:** Closed

**Thursdays:** 09:00-12:30

**Fridays:** 09:00-12:30

**POST OFFICE**

**All usual main P.O. services**

Halford Room, Clarbrough Village Hall  
Main Street, Clarbrough, Retford, DN22 9LN

**If you have any queries, do not hesitate to contact:  
Michael C. Carnall 07836 375 808 / 01427 884 469  
michaelcarnall@yahoo.co.uk**



**Clarborough & Welham Parish Council says Thank you!**

On Saturday morning (28<sup>th</sup> September) over 20 volunteers lending a hand with the removal of red chippings from the parish pasture footpath then spreading over the allotment car park showing a wonderful community spirit... Allotment holders, Ross & Dave (the farmers that supplied the buckets), and members of the public from all age groups worked their socks off over 2 hours on Saturday morning. The red chippings from the parish pasture footpath were shovelled in to the buckets which were then moved to the allotment car park.



A huge thank you to Dan from the Kings Arms for supplying sausage baps free of charge, and also to Trent Hire for supplying the wacker plate, also free of charge.

The parish council extends their heartfelt thanks to all of the hard working volunteers who made this possible. Your hard work will allow the path to be used by wheelchair and pushchair users allowing the whole of our community to enjoy the pastures.

**Phil Gibson**  
*Chairman Clarborough & Welham Parish Council*

**BDC Tetrapak Recycling**

We have recently been forced to make the difficult decision to remove Tetra Pak Recycling bins from locations in Worksop, Retford and Harworth.

Over the last few months, the company that collected Tetra Paks and other cartons for recycling could not provide a reliable and regular service, which led to overflowing bins and complaints about the contents and excess rubbish littering the areas around the bins.

There is currently a very limited way for Tetra Paks and cartons to be recycled in the UK and only a small number of companies that can make these collections. However, we are currently investigating any realistic alternatives as a priority.

*In the meantime, residents are asked to recycle their Tetra Paks and cartons at the Household Waste Recycling Centres in Worksop and Retford where special containers are provided – if in doubt, ask one of the helpful staff.*

**Bassetlaw Museum's Roaring Twenties**

Tuesday, 30<sup>th</sup> July between 10:00 and 15:00 saw Bassetlaw Museum's Celebration of the Roaring 20s with a fabulous festival of fashion, dance, music, and art. The tape cutting by Cllr David Naylor, Mayor of Retford and Cllr Sue Shaw, Chair of Bassetlaw District Council opened things...



Visitors marvelled at the original dresses from the 1920s and were inspired to create their own outfits to wear with trims and tassels. There were opportunities to decorate a real dress or waistcoat with the help of talented seamstresses.

Transported back through time by- the music of a live jazz band while some learned to dance the energetic Charleston with a dance instructor. Think Great Gatsby, Bugsy Malone, and Peaky Blinders at a party like the Great Jazz Age!



Refreshed with a cheeky mocktail while capturing the moments with photography tips and tricks from a photographer. Lots of other fun children's activities too!

*The event was FREE for adults and children of all ages.*

**Computer Sage**

**Healing Computers**

Need help or advice for your computer?  
No problem too big or too small.

Hardware, software, virus, Windows, wireless, Internet, upgrades, training or just plain help and advice.

£30 ph, £60 max, no fix no fee, no callout.

Get the job done, 24/7  
Email:

Call: 07807350355  
computersage999@gmail.com





**Be Heard from Home Group**

We'd like to introduce our Be Heard from Home Group, which does exactly what it says and offers Bassetlaw tenants the opportunity to have their say without leaving the comfort of their own home.

There's no need to attend a physical meeting and being part of the group will give you lots of opportunities to get involved, including:

- Surveys emailed or posted to your home.
- Opportunity to take part in consultations using Microsoft Teams.
- Access to free online training.
- Live stream links so you can watch the Tenant Forum and Annual Tenant Conference from home. We're also looking to include a function where you can ask questions during these meetings.
- Take part in online based workshops and scrutiny sessions to help influence improvements to our services.

This list is not exhaustive, as other opportunities may arise as the group develops.

If you're interested in being heard from home, please contact your Tenant and Resident Engagement Team at Bassetlaw District Council on 01909 533 263 or email [anita.fairweather@bassetlaw.gov.uk](mailto:anita.fairweather@bassetlaw.gov.uk) or [joshua.booth@bassetlaw.gov.uk](mailto:joshua.booth@bassetlaw.gov.uk)

*Drop-in sessions we're doing at Hallcroft Family Hub on the 18<sup>th</sup> November and 6<sup>th</sup> January, 09:30 – 12:00*

I have written a book about **Headdon!** It's taken me many years, but I have finally finished it.

I really hope that some of you would like to buy a copy of it!

Headdon was my focus, but of course it also contains much information about Upton and Grove.

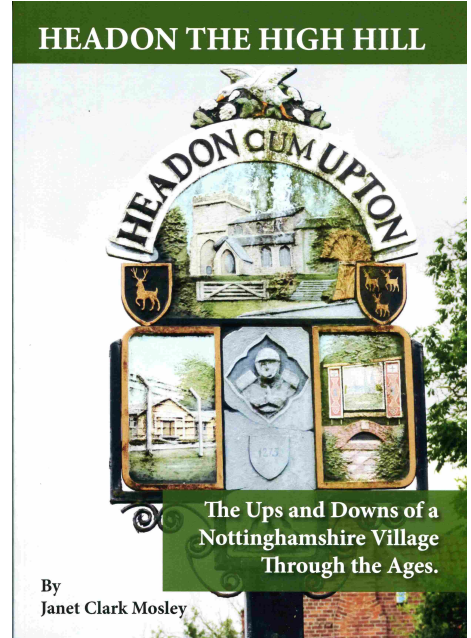
It is A4 size, with 111 pages and looks at our history from the Stone Age to almost the present day.

Exploring its history has revealed a number of remarkable events which helped to shape our village!

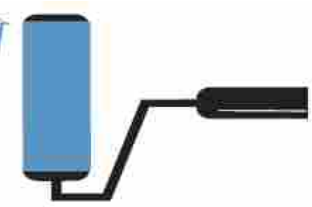
For instance, can you believe that our villages were once terrorised by marauding armies and murderous henchmen and that Headdon once saw an increase of 900% in its population?

If you want to discover more, the books are available from me at £15 each.

You can Email me at [janet@thorpe-house.com](mailto:janet@thorpe-house.com) or phone me on 01777 248 282 to find out more, or to buy a copy.



**ANDI GRAY**  
PAINTER & DECORATOR



- INTERIOR & EXTERIOR
- QUICK & QUALITY
- QUALITY PAPER HANGING
- TURNAROUND ON
- DOMESTIC & COMMERCIAL RENTAL PROPERTIES

**07837 370827**

[andigraypropertyservices@hotmail.co.uk](mailto:andigraypropertyservices@hotmail.co.uk)

**A LOCAL TRADESMAN ON YOUR DOORSTEP**

*A professional service to a high standard*



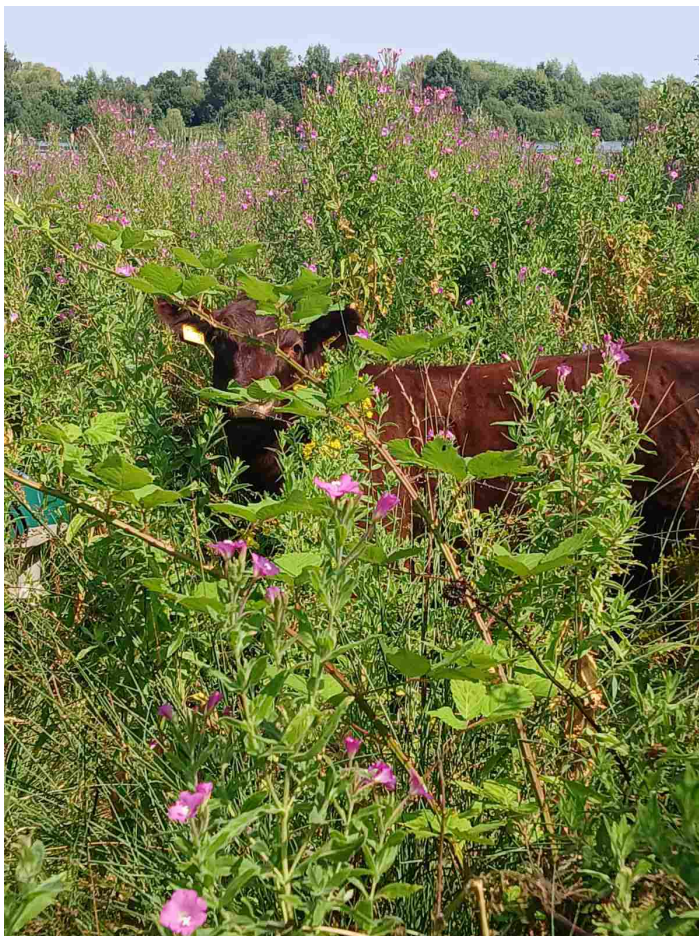




## Into autumn with Muddy Fork

After an unpromising start to the growing season, the summer didn't really get much better. Muddy Fork, Retford's Gardening for Wellbeing charity, continued to struggle with the weather and the apparently permanently hungry wildlife of the nature reserve. A few things thrived – impressive harvests of jumbo-sized onions and curly kale were particularly notable, and the potatoes were reliable. Others did less well.

Some of the more quirky survivors were the runner beans in a far corner of the garden extension which did much better than the main planting, and the courgettes which were moved in desperation to the polytunnel to protect them from predators. Tomatoes and peppers battled on, but the beautiful, shiny purple aubergine was a one-off. The highlight / low point of the season, however (depending on your sense of humour?) was the invasion



by two young cows escaping from the Idle Valley herd. Having broken into the garden, these intrepid explorers proceeded to eat every piece of fruit in the orchard which they could possibly reach. Apples, pears, plums, all went down a treat. Leaving very little for anyone else sadly. No plum chutney this year.

Muddy Fork continues to get out and about in the community. Retford Heritage Day in September saw a Muddy Fork stall in Retford Town Hall, with sales of produce and the opportunity to network with other organisations. The next outing will be for the Retford Christmas Lights switch-on on Sunday 24<sup>th</sup> November. By

then Muddy Fork hopes to have a supply of Christmas wreaths for sale – either as finished articles or just the willow framework, providing the basis for some enjoyable crafting at home.

**For further information, if you might be interested in volunteering, or could make a donation, check out the website at [www.muddyfork.org](http://www.muddyfork.org), while referrals, whether self-referrals or on behalf of someone else, can be made directly to [rose.muddyfork@outlook.com](mailto:rose.muddyfork@outlook.com). Visitors to the garden are always welcome.**



**Nottinghamshire**  
Wildlife Trust

### Wildlife Trust celebrates fundraising champions and calls for new champions to come forward to help create a wilder Nottinghamshire.

Nottinghamshire Wildlife Trust, the county's largest locally based environmental charity, is keen for people who share its passion for protecting nature to come forward to help raise funds for its work across the county.

Between May 2023 and March this year, after being elected as Newark Town Mayor, Pamela Ball raised over £1000 for the Trust by undertaking the 180km Magna via Francigena trek taking in remote areas of Sicily; organising a wine tasting, a musical evening and a quiz night.

This summer, the charity, which celebrated its 60<sup>th</sup> anniversary in 2023, has benefitted from a solo 225km walk much closer to home - starting at its Attenborough Nature Reserve and finishing at its largest site- the Idle Valley Nature Reserve near Retford in north Notts. Back in June, during the The Wildlife Trusts' annual 30 Days Wild campaign, Graeme Philp set off from Attenborough on the 8<sup>th</sup> June and finished his mammoth trek at the Idle Valley three weeks later on June 29<sup>th</sup> – raising £536.

In March, The University of Nottingham Probono Society held a used book sale, raising £52.11 and Nottinghamshire based artist Jeanette Ward has so far raised £100 through the sale of wildlife illustrations – donating a percentage of profits from each sale.

Regular fundraiser Julia Faulconbridge raised £410 for our meadows appeal by selling plants at a local open garden over the summer too.

#### **Every pound counts**

Speaking about the fundraisers' efforts, Fundraising Officer Maria Romanov said: *"Every pound raised by individuals and groups helps us create a wilder Nottinghamshire for everyone. Whether supporting the care and protection of our wetland reserves such as Attenborough and Idle Valley, enabling us to work with young people and communities keen to connect with and take action for nature or boosting our nature grazing programme on precious sites across the county, our fundraisers are doing an amazing job and we'd love to hear from more people keen to support us."*

Anyone interested in raising funds for the charity's works across Nottinghamshire or wishing to discuss a fundraising idea should email [info@nottswt.co.uk](mailto:info@nottswt.co.uk)

**Rachel Rutherford**



**Blue plaque celebrating the canal in Retford**

A new blue plaque on the former Crown Inn was formally unveiled by the Mayor of Retford, Cllr David Naylor, as part of the town's Heritage Day events.

Retford Civic Society and the Chesterfield Canal Trust have worked

together to have the plaque made and installed. Cllr Dan Henderson and Cllr John Manners covered the £544 cost from their Community Funds.



[Above, left-right] Cllr Dan Henderson, Rod Auton & Cllr John Manners.

The original route of the canal was to go from Chesterfield to Bawtry, then a major port on the river Idle. However, strong lobbying by the people of Retford, led by the Rev Seth Ellis Stevenson, promoted a change to bypass Bawtry and instead go through Retford and thence to the River Trent. On 25<sup>th</sup> January 1770, James Brindley, the canal's engineer, announced at a meeting in the Crown Inn that he was now recommending the Retford route. It is this meeting that is celebrated on the blue plaque.

The canal opened fully in 1777, but it got as far as Retford in November 1774. The first boat to arrive was the cause of much celebration and a hogshead of ale was given to the residents. Given that this is 54 gallons, there may have been a few sore heads the next day!

In the 1770s, the Crown was the town's principal inn and was used for a wide range of business and administrative purposes. The Chesterfield Canal Company frequently met there. Over the years it has seen many changes, including being a building society. As a drinking establishment it has

had many names including the Crown, the Crown Hotel, the Litten Tree and most recently Yates's. The latter closed in January 2017 and the building sat empty and forlorn until recently being turned into flats by a developer called Garnet Harrison. When approached, he was very pleased to host the plaque.

Rod Auton, Secretary of the Chesterfield Canal Trust, said "We are delighted to be unveiling this blue plaque. It is very fitting that this is happening on Retford Heritage Day because the canal has been a feature of life in Retford for 250 years. We are very grateful to Retford Civic Society for arranging everything, to Garnet Harrison for allowing the plaque to be placed on his building and to Cllrs Henderson and Manners for covering the cost from their Councillor Community Funds."



By the time you read this Newsletter, the resurfacing work on the A620 from Retford's Moorgate through to just Clarbrough's side of 'Welham corner' should have been well underway.

However, if you want to – or need to – see the whole of the letter to residents that was issued on 24<sup>th</sup> September, go to our community website (see front cover of this Newsletter) and then follow the home page's menu: **On the Road** where a link to the **letter to residents** is provided at the top of that page.

If you check this link you will find both details of the work plan and also a map showing the diversion routes available along with the no-go areas. However, please note a typo in this letter referring to November 2025 rather than 2024!

**Editor**

**School Holidays through to July 2027!**

Published dates for school holidays can be really useful for many reasons but for planning holidays can be really useful – and maybe also help to reduce costs! Visit our community website:

[www.clarbrough-welham.org.uk](http://www.clarbrough-welham.org.uk)

and look for the home page link:

This takes you to the main **Education & Training** page which has links to both Nottinghamshire's and also Lincolnshire's (for Gainsborough) school holidays through to July, 2027.

Not only is this important for parents (and grandparents) with children of school age but also for those of us who don't since this can help us book holidays in slightly cheaper 'term times'.

**Editor**

**Bassetlaw**



We are a community resource agency offering help and support to individuals and organisations throughout Bassetlaw; promoting the independence of older and vulnerable people and supporting individuals with long term conditions.

**Here are some of the things our clients have said about the services they use**

Community Transport- Mr A said “ Thankyou so much for arranging my trips, its marvellous to be picked up from home, the car scheme really is a lifeline to me”

Home Support Service - Mrs D said “ I look forward to Jenny coming every week, not only is she company for me she does those jobs around the house that I am unable to do anymore due to my declining health. Jenny’s help has allowed me to continue living in the home that I brought my children up in.”

Supported Independent Living Service- Mr W said “ The staff at Bassetlaw Action Centre are wonderful they helped me to get pension credit that I didn’t realise I was entitled to, I am now able to claim the winter fuel allowance”

**Have you ever thought about Volunteering?**

If you enjoy meeting people and helping the local community you are the ideal person to volunteer on any one of our schemes. Any amount of time that you are able to give to a scheme is welcome, please contact **Bassetlaw Action Centre** for more information.



Mr P has volunteered for Bassetlaw Action Centre for 4 years and says “ I find volunteering very rewarding, it gives me satisfaction helping the community. It has made retirement feel less lonely for me and I feel I still have a sense of purpose.”



**Making A Difference Throughout Bassetlaw**

Bassetlaw Action Centre offers a range of services to help people remain healthy and independent.



**Bassetlaw Action Centre** Canal Street, Retford, Nottinghamshire DN22 6EZ  
01777 709650 enquiries@actioncentre.org.uk www.bassetlawactioncentre.org.uk

Bassetlaw Action Centre

Registered Charity No: 1106908  
Company Registered in England & Wales No: 5177066

@BassetlawBAC



## Kashmir Tuk-Tuk Challenge 2024 A Journey of Purpose & Adventure

Your Editor and wife, Christine, followed up our 2023 adventure organised by Muslim Charity in Pakistan's Punjab by taking part in September 2024's Adventure in Pakistan's Kashmir.

If you visit our community website ([www.clarbrough-welham.org.uk](http://www.clarbrough-welham.org.uk)) and follow the **Local Faiths > Muslim Charity** from our home page's main menu you will have links to explore the 2023 Adventure and also some information about the 2024 trip. At the time of writing we are awaiting video reports of the Kashmir experiences, but in the meantime Maroof Pirzada (UK Director of Muslim Charity) has provided the following brief description and we have added a range of images that give a flavour of our experiences.

Muslim Charity, based at Eaton Hall in Retford, organised the "Kashmir Tuk-Tuk Challenge 2024" in September 2024, bringing together over 20 participants from the UK on an exhilarating and impactful journey through the stunning landscapes of Azad Jammu Kashmir. The group, including returnees Greg and Chris Herdman from the "Retford Rickshaw" team, explored the region's scenic beauty, experienced local culture and together all participants raised crucial funds for vulnerable families.

Starting in Islamabad, the participants travelled to Muzaffarabad for training on driving tuk-tuks before embarking on a memorable journey through the valleys of Dhirkot, Bagh and Arja. They visited Muslim Charity's impactful projects, including a newly inaugurated school, and celebrated the opening of a health centre, directly witnessing the positive change these initiatives bring to local communities.

The challenge's highlight was the handover ceremony in Arja, where tuk-tuks were gifted to pre-selected families, providing them with a sustainable means of income generation. The entire trip was filled with moments of joy, learning and emotional connection, as participants connected with the beneficiaries and experienced firsthand the power of their support.

Volunteer Sabba Mirza shared live updates on social media, capturing the excitement of the journey, including the trek to Ganga Chotti and tuk-tuk training sessions. To view highlights from the trip, check out Muslim Charity's Instagram and Facebook pages.

With a perfect balance of adventure, cultural immersion and life-changing charity work, the 2024 Tuk-Tuk Challenge inspired all involved. If you're moved to join next year's journey and make a lasting difference, sign up for the 2025 edition at:

[www.muslimcharity.org.uk/tuktuk2025](http://www.muslimcharity.org.uk/tuktuk2025)

[Facing] A few photos taken on the 2024 Challenge give just a flavour of the trip. We hope to be publishing videos on our community website in due course.



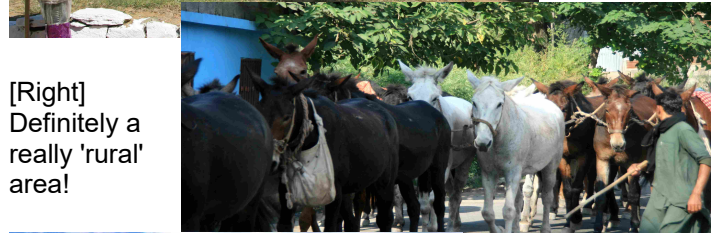
community website in due course.

**Finally (for now!) our sincere thanks to: Julie Mallett, Danyal Nizir and Durham's Heating Services for their contributions to our 2024 charity donations.**

[Right] Our Tuk-Tuk training starts.



[Left] Welcome to Chmayati Boys Middle School, Dhirkot.

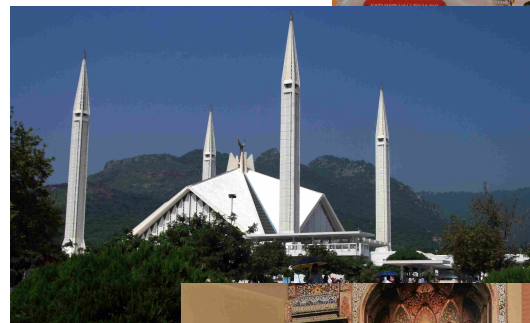


[Right] Definitely a really 'rural' area!



[Left] Many members of our Muslim Charity group were quite entertaining!

[Right] An emotional conclusion to our Tuk-Tuk Challenge.



[Left] Islamabad's spectacular Faisal Mosque.

[Right] Welcome!







# DISCOVER YOUR FUTURE IN HEALTH AND SOCIAL CARE

At our

## Open Event

**Thursday 7th November 2024**

**4.30pm - 6.30pm**

**The Bridge Skills Hub,  
Bridge Place, Worksop, S80 1DT**



**Explore our range of Higher Education Health Courses  
all delivered at the Bridge Skills Hub:**

- Level 3 Access to Higher Education: Health Science Professions
- Level 4 Certificate of Higher Education: Assistant Practitioner (Health and Social Care)
- Level 5 Foundation Degree: Assistant Practitioner (Health and Social Care)

**For more information, scan the QR code or  
please call 01909 504500**





**Councillor contributes to new emergency signs in Clarborough**

Public places in Clarborough have had new emergency signs installed to provide essential information and boost safety in the village thanks to a Councillor Community Grant.

Cllr Fraser McFarland, Ward Member for Clayworth at Bassetlaw District Council, has donated £200 towards five emergency contact signs located in key areas of the village, including the entrance to the play park and football pitch at the village hall, the parish pastures entrances, and the allotment gate, all off Broad Gores.

Phil Gibson Chairman of Clarborough and Welham Parish Council said: "I would like to thank Cllr McFarland for his donation towards the emergency signs, which give vital information if an incident does occur in one of these locations. We want to make sure that parishioners or people visiting the village know where the nearest hospitals, are, and the exact locations they are in case of an emergency."

The signs include grid reference along with the postcode of the location, as well as addresses to the nearest Accident and Emergency Hospital and Minor Injury Unit. Also included are contact numbers for In Case of an Emergency or Non-Emergency incidents and for the Parish Council. Cllr Fraser McFarland added: "Safety is essential in Clarborough. Geographically, Clarborough is in between three towns and looking after the people who visit the

village for all different types of reasons is key to ensuring that the village runs smoothly."

Each Bassetlaw District Councillor is allocated a small budget and has the discretion to award grants to community activities that will benefit the community within their respective electoral ward areas. Councillors will consider grant applications for sports; culture and heritage; environment and sustainability; social welfare; and community activities.

To learn more about this funding, please visit the Councillor Community Grant section of [www.bassetlaw.gov.uk](http://www.bassetlaw.gov.uk)



*Pictured from left to right, Cllr Fraser McFarland, Phil Gibson, Chairman of Clarborough and Welham Parish Council*

EXCEPTIONAL  
BRITISH

# KITCHENS

DESIGN. SUPPLY. INSTALL

Call 01777 702684 for more information or email us at [enquiries@durhamsheating.co.uk](mailto:enquiries@durhamsheating.co.uk)

**Rt. Honorable Robert Jenrick MP**

When I was first elected as Member of Parliament for Newark over a decade ago, I was concerned to find that our constituency had disappointingly low rates of visits to Parliament. To address this, my team and I worked on making Parliament more accessible to local people.



I am extremely proud that our constituency now has one of the highest numbers of visitors among all constituencies, having welcomed over 9,000 residents to Parliament through our regular coach trips from the constituency to Westminster. These cost-price trips comprise travel

to and from Westminster, a professional tour of both Houses of Parliament, and a Q&A session with me in the Grand Committee Room in Westminster Hall. This experience offers a valuable insight into the inner workings of Parliament, and I am delighted to hear that so many people find the day both enjoyable and informative.

As your local MP, I am committed to engaging with all corners of the constituency, and I am particularly excited to continue meeting and getting to know my new constituents in the Bassetlaw wards of Clayworth and Sturton. To mark your introduction into the Newark constituency, I have extended a special invitation to residents in these wards to come and join me on one of my trips.

Over recent weeks, you may have noticed that you have received a letter from me, inviting you down to Westminster on Friday 22<sup>nd</sup> November. With limited spaces on the coach and exceptionally high demand, we draw applications from a hat to ensure that everyone is given equal opportunity to attend.

For those of you who are fortunate enough to be selected in the draw, I look forward to welcoming you to Westminster. You will receive further details and a full itinerary in due course, and my team will be on hand throughout to ensure you have as smooth a day out as possible.

For those of you who unfortunately do not get selected through the draw or did not apply but wish to be considered for future trips, fear not! When it is possible to do so, I endeavour to organise one trip per month from various locations across the constituency. Please contact my office and ask to be added to the waiting list.

*Rt Honorable Robert Jenrick MP*

The poster features a green forest background with a large red and white target in the center, with a yellow arrow hitting the bullseye. In the top left corner is the RMTC logo (Retford Musical Theatre Company) with two birds. The text '12th - 15th December' is written in a yellow, stylized font at the top. The word 'noda' is written in a white, cursive font in the top right. The title 'ROBIN HOOD' is written in large, red, outlined letters across the middle. Below the title is a white banner with the text 'THE MERRIEST OF ALL PANTOS' in red. At the bottom, 'Retford Little Theatre' is written in a yellow, stylized font. At the very bottom, the ticket information 'Tickets: www.retfordmusicaltheatrecompany.org' is written in white.





## Winter Fuel Payments 2024 - 2025

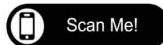


Starting this winter, if you live in England or Wales, you'll only be able to get a Winter Fuel Payment if you're born on or before 22 September 1958 AND receiving one of the following benefits: Pension Credit, Universal Credit, Income Support, income-based Jobseeker's Allowance or income-related Employment and Support Allowance.

To find out more and see if you are eligible for any of these benefits, visit [www.gov.uk/winter-fuel-payment/eligibility](http://www.gov.uk/winter-fuel-payment/eligibility) or scan the QR code.

You can click through from this website to find out more about Pension Credits

Call the Winter Fuel Payment helpline on 0800 731 0160 if you have any enquiries or you do not receive your payment.



## Winter Fuel Payments Volunteering Cost of Living



Whether it's lending a hand at a local food bank, taking part in environmental clean-ups, or supporting arts initiatives, "Do More 2024" aims to support Bassetlaw individuals to be local champions for positive change.

If you would like to find out more about the different volunteering roles available in Bassetlaw please email [bcvs@bcvs.org.uk](mailto:bcvs@bcvs.org.uk) or call 01909 476 118.

You can also visit [www.bcvs.org.uk/volunteer](http://www.bcvs.org.uk/volunteer) to browse live vacancies.

### Cost of Living Support in Bassetlaw

Local Support for Local People



We will once again be working alongside partners across Bassetlaw to communicate support and services available to help people with concerns they may have around the Cost of Living.

If you need support with the Cost of Living, there is a Bassetlaw support booklet available, full of information and guidance.

You can also view the booklet and all the information online here:

[www.bcvs.org.uk/colbassetlaw](http://www.bcvs.org.uk/colbassetlaw)

**tel: 01909 476118**

Bassetlaw Community and Voluntary Service, Old Abbey School, Priorswell Road, Worksop, S80 2BU  
 web: [www.bcvs.org.uk](http://www.bcvs.org.uk) | email: [bcvs@bcvs.org.uk](mailto:bcvs@bcvs.org.uk) | Charity Number: 1140782

### District Councillor's thoughts on Winter Fuel Payments

I am vehemently opposed to Labour's reckless plans to strip the Winter Fuel Payment from 10 million pensioners - a heartless decision that would inflict severe harm on our most vulnerable residents, particularly in rural communities like Clarborough and Welham.

The Winter Fuel Payment is not just a benefit; it's a lifeline. For many pensioners, it's the difference between staying warm and facing a brutal, freezing winter. In rural areas, where heating costs are often higher due to older, less efficient homes and where services are scarce, this payment is absolutely essential. Labour's plan would force countless elderly residents into an impossible choice between heating their homes and affording basic necessities, plunging many deeper into fuel poverty and putting lives at grave risk.

In communities like Clarborough and Welham, where access to public transportation and healthcare is limited, the consequences of cold homes are even more dire. Elderly residents are far more vulnerable to cold-related illnesses, which could lead to a surge in hospital admissions, overwhelming our already strained NHS. Labour's proposal is not just fiscally irresponsible; it's morally indefensible. It cruelly abandons those who have spent their lives contributing to our society.

I am committed to fiercely opposing this dangerous policy to protect our pensioners and rural communities.

**Cllr Fraser McFarland**  
**District Councillor for Clayworth ward**  
 Tel: 07341 568 602  
 Facebook: [fb.com/CllrFraserMcFarland](https://www.facebook.com/CllrFraserMcFarland)

### Parking scam alert



This month we want to make you aware of a national scam circulating relating to parking fines, and remind you that Councils or car park operators will NEVER contact you by text message about a Penalty Charge Notice (PCN).

As part of the parking scam, victims are told

that their local council has issued them with a PCN and that if payment is not received within 28 days it may double by 50%. Your Editor received a similar message recently which also added threats such as 'court proceedings' and 'driving licence suspension'!

If you receive a scam text message you can forward it to the National Cyber Security Service on 7726.

**Question:** Why is milk the fastest liquid on earth?  
**Answer:** Because it's pasteurised before you can see it.

### Clarborough Parish became Clarborough & Welham Parish from 1<sup>st</sup> December, 2006

Until the late 1800s Clarborough was a larger parish, taking in additional areas to the west and south such as Bolham, Little Gringley, and the Spital Hill and Moorgate portions of the Retford area. In 1827-29 a *chapel of ease* was built in the Retford-end of Clarborough Parish which in due course would become St.Saviour's church. This was constructed to make access easier (hence the name!) for the increasing population of the Retford end of Clarborough Parish to attend church rather than the long walk to the Parish's church of St.John the Baptist in Clarborough's Church Lane.

On 31<sup>st</sup> December 1894 the civil parish of North Retford was split from Clarborough to encompass the area for St. Saviour's, and in 1921 it was further merged into East Retford. The remaining area continued to be called Clarborough Parish until 2006:

*District Council notices of the change of name of a parish under section 75 of the Local Government Act 1972 included Bassetlaw District in the County of Nottinghamshire renaming Clarborough Parish as Clarborough & Welham Parish with effect from 1<sup>st</sup> December, 2006.*

For much, much, more on the history of Clarborough and Welham from William the Conqueror's Great Domesday Book, go to our community website ([www.clarborough-welham.org.uk](http://www.clarborough-welham.org.uk)) and explore the Local History pages.

*Editor*

# computer problems?

*I'll come to you at your home.*

I specialize in solving home **computer problems**; from **printers**, the **internet (WiFi)** and **viruses** to your **emails** and **software issues**. Plus all other computer related headaches, at your home.

I can also help if your computer is **running slow** and needs a **clean-up**, an **upgrade** or you need help or advice to **set up** a new computer. I'm also happy to help with **tablet** or **smartphone problems** & set up.

20 *Years Experience* ★★★★★

Call or text James today  
07568 174 474  
 Your local and friendly computer man



## Clarborough's Christmas Tree Lighting

This year's Christmas Tree Lighting event starts at 17:30 on Wednesday 4<sup>th</sup> December in traditional form with Clarborough Primary School leading carol singing under the tree as Phil Gibson, Parish Council Chairman, lights the tree.



The rest of the evening follows an exciting development, much based on previous years but taking place in and around the Kings Arms! This will include Santa's Grotto – you'll probably recognise Santa from his previous appearances. To the rear of the Kings Arms will be the marquee of stalls while inside will be a range of food, all created 'in house'. However, there will also be a Barbecue outdoors as well as some sweets stalls.

Anyone wanting to reserve a stall should contact Jackie Lane on **07980 598 005**.

During the event several musical entertainments will take place inside the building with a mixture of themes including Christmas.

Outside too – the car park will be closed so that childrens' games can also take place. Parking will be available at Clarborough Village Hall directly opposite the pub – parking behind the hall - follow the signs pointing right of the building.

These details are very much 'planning in progress' and a further Committee Meeting is scheduled for 19:00 on Tuesday 22<sup>nd</sup> October in the Kings Arms. If readers have any questions for the organisers before this meeting, can you either contact Dan Rees at the Kings Arms or phone him on 07777 136 220.

*Wise sayings often fall on barren ground, but a kind word is never thrown away.*

**Arthur Helps (1813-1875)**

*Before you marry someone, you should first make them use a computer with slow Internet to see who they really are.*

**Will Ferrell (1967- )**

## Clarborough's Thursday mornings CCC

**CCC** stands for Coffee, Cake and Chat! Clarborough Village Hall hosts a weekly CCC session from 10:30 – 11:45 for a friendly get together along with various useful community links, news as well as a raffle!

A cup of coffee (or tea) together with a choice of piece of cake costs just £1.20.



[Above] Carolyn employs her usual skills in cutting cakes into 'equal' portions before the multitude arrive!

We should also emphasise that CCC isn't just for locals – anyone is welcome from where ever they live – you will be most welcome.

*Editor*

## South Street Storage

Offers affordable, secure, indoor storage solutions meeting both commercial and domestic needs.

Various sized units available.

Close to Retford town centre. Easy access just off A1.

### Suitable for:

- General household items
- Sports equipment
- Student storage
- Documents storage
- Bicycle storage
- Stock storage



**Services:** Pickup and delivery options available

**Open:** Mon – Fri 10:00-16:00  
Saturday 10:00-14:00

**01777 702 779 / 07550 002 242**  
**southstreetstorage@gmx.com**



**Bassetlaw Hospice provides palliative care for patients who have been diagnosed with cancer or a life limiting illness. It exists to support the patient and their families to achieve the best quality of life.**

Situated in a peaceful location at the rear of the Retford Hospital, Bassetlaw Hospice prides itself on giving the best possible care and support for everyone who accesses the services.

The staff at the hospice encourage the community to come and visit the hospice and the tranquil gardens that we have available [see opposite]. We hold a community coffee morning every Friday between 10:00-12:00. The coffee morning at Bassetlaw Hospice is also registered as a warm space.

This Year Bassetlaw Hospice celebrated it's 30<sup>th</sup> birthday. During these 30 years there has been many changes at the hospice, including a £1.2m refurbishment which saw the hospice grow from a 6 bed unit to a 8 bed unit. Other changes include a new 1<sup>st</sup> floor containing office space, staff room and a fully equipped training room. **Photo at top of page shows Sir John Peace completing our official reopening on 25<sup>th</sup> January, 2024 with BDC Cllr Deborah Merryweather after the refurbishment.**

The training room is available for community groups to use for a donation to Bassetlaw Hospice, tea and coffee is also available.

Bassetlaw Hospice organises a number of events across the year. These events are important to help create awareness, promote the hospice and to raise the vital funds needed to ensure the hospice continues to support patients and their families. The charity must raise over £350,000 a year to be able to achieve this.

Bassetlaw Hospice also has two shops that help to achieve these goals. One in Retford market square and the other in Worksop by the clock tower. The shops run solely on donations from the community, if you have any unwanted items then please donate them and please don't forget to sign up for Gift Aid if applicable.

The events we have coming up for the rest of the year are: Snowdon climb, all spaces are now full but look out for what's happening in 2025. Christmas Fayre, Saturday 16<sup>th</sup> November at The Well, Retford. Doors open at 10:00 until 14:00.



Christmas star event, Bassetlaw Hospice car park, Monday 2<sup>nd</sup> December from 18:30 Please feel free come along. *If you have a group that would like a key speaker or to find out any more information then please contact Bonney, Charity Operations Manager on 01777 200 060 or email [bonney@bassetlawhospice.org](mailto:bonney@bassetlawhospice.org)*

ReNew

Carpet & Upholstery Cleaning



- High Powered Portable Equipment
- Commercial & Domestic Services
- Stain Removal / Reduction
- Satisfaction Guaranteed

- Dry in Hours NOT Days
- 'One Off' or Regular Cleans
- Fully Insured & Experienced
- CRB Checked Operators

Please Call Mob: 0755 000 2242



## Irish Potatoes and the Ottoman Sultan – what a link!

First domesticated in southern Peru and Bolivia more than 7,000 years ago, the potato began its long trek out of South America in the late 16<sup>th</sup> century following the Spanish conquests. Potatoes were slow to spoil, had three times the caloric value of grain and were cheap and easy to grow on both large farms and small, backyard lots. When a series of non-potato crop failures struck northern Europe in the late 18<sup>th</sup> century, millions of farmers switched to the more durable spud as their staple crop.

Nowhere was dependency on the potato more widespread than in Ireland, where it eventually became the sole subsistence food for one-third of the impoverished tenant farmers. The 1841 census showed a population of just over eight million. Two-thirds of people depended on agriculture for their survival but rarely received a working wage. They had to work for their landlords in return for a small patch of land to farm. This forced Ireland's peasantry to practice continuous monoculture, as the potato was the only crop that could meet nutritional needs.

By the early 19<sup>th</sup> century, however, the potato had begun to show a tendency toward crop failure, with Ireland and much of northern Europe experience smaller blights in the decades leading up to the Great Famine. While the effects of these failures were largely ameliorated in many countries thanks to their cultivation of a wide variety of different potatoes, Ireland was left vulnerable to these blights due to its dependence on just one type, the Irish Lumper. When HERB-1, which had already wreaked havoc on crops in Mexico and the United States, made its way across the Atlantic sometime in 1844, its effect was immediate—and devastating. By late 1845 between one-third and one-half of Ireland's potato crops had been wiped out. The destruction continued the following year, when three-quarters of that year's harvest was destroyed and the first starvation deaths were reported.

By 1851 one million Irish, nearly one-eighth of the population, had died from starvation or disease. Emigration from the country, which had steadily increased in the years leading up to the famine, ballooned, and by 1855 two million people had swollen the immigrant Irish populations of Canada, the United States, Australia and elsewhere. Even today, more than 150 years later, Ireland's population has still not recovered its pre-famine level!

Struggling to grow enough food to feed their families on plots of land as small as one acre, these farmers turned to the potato en masse; its ability to grow in even the worst soil added to this attraction. Requiring calorie-heavy diets to carry out their punishing workloads, they were soon consuming between 40 and 60 potatoes every day. And the potato wasn't just used for human consumption: Ireland's primary export to its British overlords was cattle, and more than a third of all potatoes harvested were used to feed livestock.

As the crisis grew, British relief efforts only made things worse: emergency importation of grain failed to prevent further deaths due to Ireland's lack of working mills to process the food; absentee British landlords evicted thousands of starving peasants when they were unable to pay rent; and a series of workhouses and charity homes

established to care for the most vulnerable were poorly managed, becoming squalid centres of disease and death.

The whole tragic story of the Irish Famine has one remarkable side story – that of the young Sultan of the Ottoman Empire, Abdülmejid, who proposed to help Ireland!



Sultan's image attribution: J'ytm7, CC BY-SA 4.0 <<https://creativecommons.org/licenses/by-sa/4.0/>>, via Wikimedia Commons

Ottoman Sultan Abdülmejid [above] had fought the Crimean War against Russia alongside allies France and United Kingdom in an alliance that pulled the Ottomans into the western European political arena.

Queen Victoria had proposed to give just £1,000 to the Irish, but was persuaded to increase that to £2,000. Abdülmejid, however, had initially proposed to donate £10,000 but was persuaded to reduce it to £1,000 to avoid offending Queen Victoria. The Sultan had wanted to give more – and when he was persuaded not to, he took private steps of his own to send aid of the most practical kind. Irish accounts dating to the 1850s insist that this aid came in the form of three ships stuffed with food, which succeeded in unloading their precious cargoes on the wharves of Drogheda having avoided the Royal Navy!

**Editor's footnote:** Drogheda's city emblem offers an interesting link to the Ottomans – note the star and crescent on top. This has provided lots of opportunities for modern commentators to either emphasise these links or deny them!



# Charity Crochet Blanket

EMILY BALL

## What is the project?

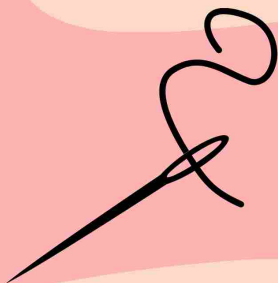
A blanket made of donated crochet granny square to sew together and donate to a local care home.

I would need the squares by the start of December.



## What kind of square?

Any style! Any colour! But it must use Aran weight yarn and a 4.5mm hook for four rounds or approx. 4in x 4in to keep them all a similar size.



## Where to send your squares

Send your squares to:

FAO Emily Ball  
Retford Arts Hub  
11 Churchgate, Retford DN22 6PA

Or drop them in the box inside the hub



Hello!

My name is Emily and a month or so ago I thought it might be nice to make a granny square crochet blanket with the help of some locals and some others from over on Instagram. And so now we have **The Charity Crochet Blanket Project!**

The project, if you wanted to take part, is to **make a granny square using 4 rounds of Aran weight yarn and a 4.5mm hook (a final size of 4in x 4in) then drop it off at the hub.** That's it! Once complete, I will donate the blanket on our behalf to a local care home in Worksop, where my Grandad is a resident. I'll let you know the fate of the blanket!

If you could weave in your ends, that would be brilliant, but if you are a beginner and you're not sure, I can do that for you. Don't worry about blocking it, I will do that too. Make as many as you like, in any colour or pattern, just try to keep them to 4inches square so I can connect them! If you could drop your squares by the start of December, that would be brilliant as it would be lovely to have it complete by Christmas.

That's all there is to it – I'd love for you to get involved. I've included a simple tutorial at the bottom if you wanted to give it a go but weren't sure how to make one.

Thank you everyone! If you have any questions feel free to message the Instagram or email below:

(@charitycrochetblanket) Ball-emily@hotmail.co.uk

Simple pattern tutorial: <https://youtu.be/nplsh-o9AM0?si=yCiXrdxf3KoH2GHV>

Emily

## Clarbrough & District W.I.



As we look to end of 2024, already I hear you say, we reflect on the past year when our Group has grown in numbers and we have welcomed new members.

In November we look forward to meeting Kevin Lennox who will talk about Western Canada including the Rockies National Park. In December we celebrate the festive month with a Christmas lunch at the West Retford Hotel.

We have an exciting programme planned for 2025 which includes subjects such as Shirt making, a belated visit from Ralf Scheinem talking about Tunnel 57, Beekeeping and the properties of honey, Gardening and caring for plants, Life on a narrowboat and crafting Christmas cards and tags.

Our members are always pleased to welcome visitors and our meetings are held on the second Monday in the month and begin at 14:00 in Clarbrough Village Hall. If you are interested in finding out more about the local WI please contact us.

Lucy Richardson  
(07966 452 249)

## Bassetlaw Museum FREE talk by Adrian Gray

At 14:00 on Friday 22<sup>nd</sup> November, local author and historian **Adrian Gray** will give an illustrated and entertaining introduction to his new book, **'The Scandalous Lives of the Sherwood Forest Nobility'**.  
Booking strongly advised!



## Goacher's Farm Shop

Wood Lane, North Wheatley



The only traditionally grown Wheatley fruit.



Picked and PYO  
**Strawberries, Raspberries, Cherries, Plums, Apples, Pears etc**  
Taste the difference!  
Fresh and frozen

Also available;  
**Asparagus, Honey, Jams, Chutneys, Potatoes, Eggs, Juices and Home baking**

Now serving hot drinks  
For opening times please  
Phone; **01427 880 341**  
or [www.goforgoachers.co.uk](http://www.goforgoachers.co.uk)





Welcome to our School!



Here at Clarborough we have designed a creative curriculum that engages and challenges pupils of all ages and abilities. Children are challenged to attain high standards and we encourage this with a wide range of teaching styles that create an environment where children feel safe and valued. We work hard with our pupils to develop their skills of self-motivation, mutual respect, understanding and a love of learning.

We are very fortunate to have an amazing school building at the heart of the village with large classrooms, a wonderful Foundation Stage Unit for children from the age of 3 years and plenty of outside space in which to play and participate in P.E.

It is our mission to create happy, successful and globally aware individuals who have a love of learning and this is taught through our school Golden Rule of 'We look after ourselves, others, our school and our planet'.

Looking forward to meeting you!  
Mrs Allison Cowell-Clark

**LIFE AT CLARBOROUGH**

There's always plenty going on!

- Dedicated staff who understand each child and are passionate about the provisions they provide.
- Considerately planned experiences across the curriculum, that inspire the children's imagination, whilst promoting their independence and developing their resilience.
- 30 hrs childcare for Nursery children (aged 3years+).
- Wraparound care, breakfast clubs and after school clubs for full-time pupils from 7.45am to 5.30pm.
- A specifically designed, spacious Foundation Unit that meets the needs of our youngest pupils.



**Come and meet us!**

We understand the importance of choosing a school for your child so we are offering families the opportunity to safely visit our school to see just how amazing we are!

To arrange a visit call: 01777 708065  
or email: [office@clarborough.notts.sch.uk](mailto:office@clarborough.notts.sch.uk)

We are on Facebook and Instagram! Search for 'Clarborough Primary' and follow us for regular updates



## Aloo Tikki Recipe

Although the recipe I'm about to share with you is simple and easy, it will have your taste buds dancing for more. Our most loved and humble vegetable THE POTATO is the star of the show in this delicious dish of Asia. Made with



very few ingredients. You can enjoy it on its own as a snack or have it as a main in a warm toasted burger bun with a squirt of ketchup, mayo and a bit of salad. The spices and the aromas in this dish will have you roaming around the streets of Pakistan or India in the comfort of your own home.

*Image source (copyright-free):*

<https://unsplash.com/photos/person-holding-a-plate-with-bread-cLnuyhnaTc>

### Ingredients list :

- Red potatoes 500 grams
- A bunch of fresh coriander
- 2 large brown onions
- 3 large eggs

### Spices list :

- Turmeric ½ teaspoon
- Chilli flakes 1 teaspoon
- Salt to taste
- Cumin seeds 1 teaspoon
- Garam masala 1 teaspoon (optional)

### Method

**Step 1:** Boil potatoes until tender but not mushy.

**Step 2:** Peel the potatoes and set aside.

**Step 3:** Finely slice the onions and the coriander.

**Step 4:** Smash down the potatoes using a potato masher, leaving some chunky bits.

**Step 5:** Add in the chopped coriander, onions, 1 egg and all the spices. Give it a good mix. When all is mixed well, you can adjust the seasoning at this stage to your liking.

**Step 6:** Oil your hands with a splash of any cooking oil to prevent the mixture from sticking to your hands. Take 2 tablespoon fulls of the mixture, shape into a ball and then press down lightly to make a fish cake shape. This mixture should make around 12-15 potato cakes. Place them in the fridge for half an hour.

**Step 7:** When ready to eat, shallow fry them in a skillet in some cooking oil. Beat up the remaining eggs in a large bowl, dip the potato cake in the egg, fry each side for 2-3 minutes until golden brown on both sides AND ENJOY.

**Tip:** These can be prepared well in advance, make a batch and pop it in the freezer and enjoy as and when you like. Suitable to freeze for 4-6 weeks.

**Tahira Pirzada**

## Clarborough Parish became Clarborough & Welham Parish from 1<sup>st</sup> December, 2006

Until the late 1800s Clarborough was a much larger parish, taking in additional areas to the west and south such as Bolham, Little Gringley, and the Spital Hill and Moorgate portions of the Retford area. In 1827-29 a *chapel of ease* was built in the Retford-end of Clarborough Parish which in due course would become St.Saviour's church. This was constructed to make access easier (hence 'ease' in the name!) for the increasing population of the Retford end of Clarborough Parish to attend church rather than the long walk to the Parish's church of St.John the Baptist in Clarborough's Church Lane.

On 31<sup>st</sup> December 1894 the civil parish of North Retford was split from Clarborough to encompass the area for St. Saviour's, and in 1921 it was further merged into East Retford. The remaining area continued to be called Clarborough Parish until 2006:

*District Council notices of the change of name of a parish under section 75 of the Local Government Act 1972 included Bassetlaw District in the County of Nottinghamshire renaming Clarborough Parish as Clarborough & Welham Parish with effect from 1<sup>st</sup> December, 2006.*

For much, much, more on the history of Clarborough and Welham from William the Conqueror's Great Domesday Book, go to our community website ([www.clarborough-welham.org.uk](http://www.clarborough-welham.org.uk)) and explore the Local History pages.

**Editor**

## Some things are better kept to yourself

Sharing personal information and opinions on social media is now very common – almost universal! But what if your sharing doesn't have the effect you intended it to because it's **oversharing**? Like embarrassing yourself or someone else because of something you posted the night before, your home being burgled because you posted your family holiday pics, or your kids' location being revealed. Or your identity being stolen if a criminal pieces together the personal details in your profile. Take a look at the article on our community website's home page!

**Editor**

**Do you require any landbased training?**

### North Notts Training Group

**"Cost effective professional training for a safe and efficient tomorrow"**

Health & Safety, Pesticides, Chainsaws, Fork Lifts, First Aid, Abrasive Wheels, Vermin Control, plus e-learning



info@nntg.co.uk  
07855751689  
www.nntg.co.uk







**Retford Arts Hub** is pleased to offer you the opportunity to browse our selection of handmade, beautiful gifts and paintings in our Christmas Fair which begins on Saturday 16th November and continues through to Christmas eve. So, come along and support local artists and makers as well as the Hub.

Would you like to try out a new skill or 'brush up' on an existing one? The Arts Hub is pleased to offer you the opportunity to join our resident artist, Paul Straker, for his latest workshop- he will offer support, guidance and encouragement to produce a finished picture using oil paints.

Medium; Oils  
 Topic; Winter scene.  
 Date; Thursday 28th November 2024  
 Time; 10.00-15.00  
 All materials supplied.

Cost-£45.00 (due on booking) Tea/coffee included but please bring your own lunch.

Very limited places, Booking essential via:  
**info@retfordartshub.com** Phone 01777 860 414 or call in at The Arts Hub at 11, Churchgate, Retford.



[Above] Far right is Paul Straker with some of our resident artists....far left....Mark Bloomer, Michael Jones and Dominique Lane.

**Protect your home against Burglary with WIDE(N)**

Want to protect your home? Think WIDE(N): **Windows, Interior, Doors, Exterior, (Neighbours)** to have the best possible protection against burglary

Research shows that a combination of security actions provides up to 50 times more protection for your home versus no security. A combination of WIDE actions is the

most effective and recommended by police throughout the country. Additionally, Neighbourhood Watch recommends engaging with your neighbours to keep an eye out for each other – this provides another line of defense when you are away.

*Editor*

**Expert Advice on Managing Energy Bills Following Price Cap Increase**



Citizens Advice North Nottinghamshire is taking proactive steps to support residents after the energy price cap rose by 10% on 1<sup>st</sup> October, pushing average annual energy bills to £1,717 per year.

The energy price cap, set by Ofgem, is designed to limit the amount suppliers can charge per kilowatt hour (kWh) for electricity and gas. However, it does not cap total energy bills, which still depend on usage. For most households, this results in an average increase of £12 per month.

The recent rise in wholesale gas prices has led to the increase in domestic energy costs, which will leave many households grappling with even higher bills as winter approaches. This increase, combined with the persistent cost of living crisis will leave many in our community feeling the financial strain this winter.

Pensioners, who are particularly vulnerable during the colder months, are a key focus for Citizens Advice North Nottinghamshire, with recent changes to the Winter Fuel Payment scheme leaving many without crucial financial support. The organisation is urging pensioners to check their eligibility for Pension Credit, which not only qualifies them for the Winter Fuel Payment, but can also lead to Council Tax reductions and other financial aid.

The Energy Team at Citizens Advice North Nottinghamshire can provide free, confidential advice on reducing energy bills, accessing Pension Credit, and other financial support that may be available.

Our team are based at our offices in Worksop, Retford and Mansfield.

For information and advice, contact Citizens Advice North Nottinghamshire on 0300 561 2800,

email [advice@canns.org.uk](mailto:advice@canns.org.uk) or visit [canns.org.uk](http://canns.org.uk)

**LAWNMOWERS**  
**Tony Halford**



**Plant & Grass Machinery Specialist**

**Tony Halford Lawnmowers, Nelson Street, Retford, Notts DN22 6LP**  
**Tel. 07976 941 407**  
**Email: [thlawnmowers@hotmail.co.uk](mailto:thlawnmowers@hotmail.co.uk)**

### Retford Badminton Club

We are a group of 'senior' men and women who like to play badminton for exercise and fun. We are looking for a few like-minded people to join us for, invariably, doubles games.

Our group plays from 19:00 to 21:00 on Wednesday evenings between September and May inclusive.

We play at Barnby Memorial Hall, High Street, Blyth, S81 8EW. Our membership fees are very reasonable!



If you are interested in joining us, please contact...  
 Alan on 01777 703 991 or [aghirst@googlemail.com](mailto:aghirst@googlemail.com)  
 Greg on 01777 700 918 or [greg2know@gmail.com](mailto:greg2know@gmail.com)

### New Board shares its vision for Retford Town Centre

Businesses, residents, and visitors to Retford Town centre got the chance to find out more about the town's new Partnership Board and its future ambitions during two drop-in sessions in October.



## Retford Town Centre Partnership Board



The Retford Town Centre Partnership Board has been created to drive forward initiatives and improvements for the town that were identified as part of the area's neighbourhood plan consultations but weren't applicable to planning. This process created a 'Vision for Retford', which

the board has used to put forward several proposals that aim to improve facilities and enjoyment of the town centre. Rick Brand, Chair of the Retford Town Centre Partnership Board said: "The Partnership Board provides a unique opportunity to deliver major capital investment into the Town Centre, identified during the consultation for the Town Centre Neighbourhood Plan, which will significantly improve facilities for its businesses, residents and visitors." These include smartening up the streetscape with new black and gold benches and bins, refurbishment of streetlights and other street furniture, greater investment in the safety and security of the town and the creation of a new youth café.

**Bassetlaw Pensioners are urged to check if they're entitled to Pension Credit, which could help with day-to day living costs.**



The Pension Credit tops up pension income, and if eligible, residents may also be able to access The Winter Fuel Payment, get help with rent and Council Tax, a free TV licence for 75-year-olds or over, or help with the cost of NHS services. Cllr Lynne Schuller, Cabinet Member for Health and Wellbeing said: "It's important pensioners make sure they're getting the financial support they're entitled to and I would encourage them to take advantage of the pension credit check by visiting the government website [www.gov.uk/pension-credit](http://www.gov.uk/pension-credit) or by calling **0800 99 1234**.

"If they're successful it could also bring about additional help with housing costs, council tax, heating bills and NHS services."

It is estimated 880,000 households across the UK eligible for the support, worth on average £3,900 a year, are missing out.

**People over State Pension age need to apply by 21<sup>st</sup> December, the last date for making a backdated claim, in order to receive this year's Winter Fuel Payment.**



You could be entitled to **Pension Credit** and get the **Winter Fuel Payment**.

### Improve your CV by volunteering

Looking to progress your career? Have you considered how much volunteering can do to increase your skills and experience and so improve your CV?

Local organisations such as Bassetlaw Action Centre and BCVS have loads of volunteering links but more locally, Clarbrough & District Community Association, managers of Clarbrough Village Hall are looking for more Trustees to join this Registered Charity (No.502076).

Contact Greg on **01777 700 918** if you are interested.

*Editor*



## The Great North Road – some Local History

For local (Clarbrough) residents, the Great North Road is almost a given fact of local communication and transport – but how has this come about and how has the 'Road' changed over the years?

That's 'recent history' – what about the past? Well, although the Roman's had developed quite a wide network of roads by the middle of the fifth century, their departure and then complexities of the Middle Ages made any national road network very much a matter of local area control and maintenance.

However, with first wooden bridges then stone replacements, by the 14<sup>th</sup> century the standard route from London to York had reverted towards the Roman line of Ermine Street in the south, and via Grantham, Newark and Doncaster through Lincolnshire and Yorkshire. Progressively, through the 15<sup>th</sup> and 16<sup>th</sup> centuries, monarchs of England developed organisations to speed postal messages across their realm. Finally, in 1635, Charles I founded the 'Letter Office of England and Scotland' opening his postal service to the public – the Royal Mail!

Things were starting to change by the 18<sup>th</sup> century. On major routes such as the Great North Road a regular postal system was established, stage-coach services were appearing and transport of heavy goods such as coal was increasing. The state of roads was clearly inadequate for this ever-greater number of carriages and wagons. The growth of turnpikes after 1700 started to provide funding for investment to address these issues.

East Retford's increasing influence in national matters started to really get results with move to redirect the Great North Road through the town in 1766 followed by Chesterfield Canal in 1777 and finally railways from 1849. The former of these resulted in establishment of a large number of coaching inns which can still be found, often in modern usages, around the Market Place and nearby streets.

The Great North Road passed through the centre of Retford up what is now London Road and then along Carolgate before swinging across Market Square to leave along Bridgegate and then North Road.

The road building revolution of the late 18<sup>th</sup> and the 19<sup>th</sup> centuries transformed the road system. The contribution of a few individuals to road building technology made an enormous impact (e.g. McAdam). The mid-19<sup>th</sup> century initiated alternatives to road transport for both heavy goods and also large number of travellers in the form of both developing railway and also canal transport, developments that took national emphasis away from our road systems. Local indications of the state of local roads back then can still be seen in the form of boot-scrapers in the lower walls of Retford's Beardsall's Row and Grove Street.

It took the arrival of the internal combustion engine to bring road development back to life. In the early 20<sup>th</sup> century it became possible, and fashionable, to re-discover the great roads of the past, and, as traffic grew so the need to improve surfaces and to take a national approach to the road network became imperative. When Britain decided to

emulate France with a national road numbering system in 1921 it was perhaps inevitable that the Great North Road should become the A1.

This progressive explosion in road transport ultimately resulted in the A1 being rerouted around Retford in 1961 with progressive dual carriageway developments mirroring those across the whole national network.

This development had the not-unexpected side effect of reducing the business opportunities of, particularly, old coaching inns such as Ye Olde Bell at Barnby Moor and the White Hart in Retford to name but two although considerable traffic continued to use the route through the centre of Retford until the late 1970s when most of the centre was pedestrianised. That route took traffic coming into Retford along London Road (A638) directly down Carolgate before twisting through Market Square and then travelling up Bridgegate to join the A634 North Road. Your Editor can still remember the 'challenges' of manoeuvring younger daughter's pushchair around the corner of Market Square/Bridgegate – the White Hart corner – while heavy trucks made their way!

*Editor*



NOTTINGHAMSHIRE  
POLICE & CRIME  
COMMISSIONER

Elected in May, 2024, Gary Godden (Labour), is Nottinghamshire's Police & Crime Commissioner. To read his latest Notts Voices newsletter, go to our community website's home page. This looks at some of Gary's more recent activities.

If your organisation/group would like to receive a free copy of Gary's newsletters, go to:

<https://www.nottinghamshire.pcc.police.uk/about-us/notts-voices-newsletter>

Nottinghamshire Police & Crime Commissioner's official website has also undergone updates making it easier for members of the public to find out more about our work, which includes holding Nottinghamshire Police to account and commissioning services that help prevent crime and support victims. Explore their website:

<http://www.nottinghamshire.pcc.police.uk/>



**CHRISTMAS TREES FOR SALE**

**£2 per foot**

Contact: 01777 700083  
Celery Cottage, Big Lane,  
Clarbrough DN22 9LX

Reserve your tree and collect nearer Christmas!!

**Editor's  
BREAKING  
NEWS**



**Retford Rotary Club** is also holding a Victorian Market & Lunch at Ye Olde Bell, Barnby Moor 10:00-14:00 on Thursday, 21<sup>st</sup> November.

**Retford Business Forum** is leading planning for Illuminate, Winter Festival of Light including late night shopping (16:30-19:00) on Thursday, 12<sup>th</sup> December.

**Retford's Big Market Day** on Saturday, 21<sup>st</sup> December will feature both Santa's Grotto and Hathersage Brass Band.

**Bassetlaw Hospice** Christmas star event, Bassetlaw Hospice car park, Monday 2<sup>nd</sup> December from 18:30 Please feel free come along. See page 16 for more.

**Clarborough Christmas Tree Lighting** on Wednesday 4<sup>th</sup> December will start with Parish Council lighting our tree outside Clarborough Village Hall before everything happening at the Kings Arms opposite!

**Newsletter editorial deadlines**  
13<sup>th</sup> January (Spring 2025 issue)  
22<sup>nd</sup> April (Summer issue)



**Clarborough & Welham Parish Council Meetings**

25<sup>th</sup> November  
6<sup>th</sup> January, 2025

Meetings open 19:00 in Clarborough Village Hall

Agendas are always posted at least a week in advance on notice boards and on our community website where you will also find approved Minutes and meeting dates through to January, 2026.

**Newsletter Advertising rates for a whole year of four consecutive issues**

Full page	£125.00
Half page	£75.00
Quarter page	£45.00
This size	£25.00

Contact Greg (01777) 700 918  
clarboroughwelham@gmail.com

Special rates for 'one off' insertions  
Yet again, our greatest thanks go to our tireless (!) team of volunteer distributors.