

Clarborough & Welham

Bassetlaw Community Newsletter

Quarterly: Spring 2025

Local Charity supports Bassetlaw Happy-to-Chat Benches
Domestic abuse and support **Fusion Café now open**
Bassetlaw's Tennant Drop-ins **Keeping safe online**
Microsoft Windows 11 alternatives **Doncaster Airport latest**
and much, much more!

© 2025 Clarborough & Welham IT Group with generous support from Clarborough & Welham Parish Council and distributed by our tireless team of volunteers.

Material published in this Newsletter does not necessarily represent opinions of the Editor. Material submitted without full contact details will not be published. All publication decisions remain the responsibility of the Editor alone.

Visit our community website: www.clarborough-welham.org.uk for much, much more!

FUSION ENERGY CAFÉ

The world's first fusion energy-themed café was officially inaugurated today, marking a milestone in public engagement with fusion energy science and technology. The Fusion Energy Café, located within the Bridge Skills Hub, Worksop, aims to raise awareness and increase knowledge of fusion energy in a welcoming setting. Featuring interactive displays, themed décor, nourishing refreshments, and guest talks, the space serves as a platform to inspire interest in fusion energy. It showcases fusion energy as a sustainable, low carbon energy solution while highlighting its potential as a transformative technology for the future.

Fusion is set to become a key industry for the area with the planned construction of the STEP (Spherical Tokamak for Energy Production) prototype fusion plant at the West Burton site.



The Café's opening is part of a broader effort to engage the local community in the programme, which will create skills development opportunities and jobs for local people. The opening ceremony was led by Climate Minister, Kerry McCarthy, who said: "The Fusion Energy Café is a fantastic way to inspire a whole generation to learn more about this groundbreaking technology and its potential to deliver safe, sustainable, and low-carbon energy, helping us in our fight against climate change." "This initiative, inspired by the development of the STEP prototype power plant at West Burton, will not only help to drive progress in clean energy but also bring valuable skills, jobs, and investment to the area."

Cllr Jonathan Slater, Deputy Leader at Bassetlaw District Council, said: "We are delighted to be working collaboratively with our partners on this groundbreaking venture to raise awareness and knowledge about the opportunities that fusion energy, science, and technology will bring to our communities. The Fusion Energy Cafe will provide a vital link in supporting the skills outreach learning for STEP and STEM, (science, technology, engineering and mathematics) as we look to upskill young people in the district, ready for a range of exciting employment opportunities in the future."

The Fusion Energy Café is funded by the United Kingdom Atomic Energy Authority (UKAEA), Bassetlaw District

Council (BDC) and North Notts Business Improvement District (NNBID).

In addition to showcasing fusion energy, the café will provide work placements for individuals with disabilities, those not currently in education, employment, or training (NEET), and individuals who have been long-term unemployed.

The Fusion Energy Café is proudly operated by local entrepreneur, Diana Kaponas. Nick Walkden, Head of Fusion Skills at UKAEA, said: "We are proud to be working with Bassetlaw District Council and North Notts Business Improvement District on this unique and exciting community-focused initiative in Worksop. "The Fusion Energy Café will highlight the potential of fusion energy to local communities, particularly through the STEP Programme at West Burton, while advancing our commitment to unlocking the social benefits fusion can bring."

Sally Gillborn MBE, Chief Executive at North Notts BID, said: "The opening of the Fusion Energy Café delivers on the commitment we outlined in our 2022-2027 business plan to create a community cafe that will provide hands-on hospitality skills development and working experience for people with learning difficulties. Through this collaboration with Bassetlaw District Council and UKAEA, and with Diana's support with the day-to-day running, we are excited to see how the presence of the Café at the Skills Bridge Hub will grow as a space to educate the community on the fusion energy industry, which will have an important role for employment opportunities in the future of the district."

The Café's opening was preceded by Minister McCarthy's visit to West Burton, the home of STEP, where the UK's first prototype fusion energy powerplant will be built, located East of Clarbrough/Retford. Fusion energy has the potential to offer safe, sustainable and low carbon energy for generations to come. It could be transformative for energy security and important in the fight against climate change.

**The Fusion Energy Café's opening hours are:
Monday – Friday, 08:30-17:00
Saturday, 09:00 to 15:00**

The Fusion Café is part of Worksop's Skills Hub located at the top of Bridge Place on the corner with Watson Road.



Winter on the Farm

The busy sound and sight of the Fieldfares feeding on fallen fruit from a frost covered Plum tree. Try saying that after a few at the Kings Arms!

True winter is here; well at least that's what any farmer will tell you. Perhaps in early February we will for sure experience false spring. My name is Ross Joyce, a farmer from Clarborough. Hopefully you will enjoy reading in my words about what's happening in the countryside around the parish, and on local farms. This is my first article in The Clarborough and Welham newsletter and hopefully if it is well received I will continue through to write in the quarterly newsletters, be it a season behind.

Winter. After a busy autumn on the farm drilling the winter corn perhaps its time to shut the farm gate and go on holiday. A weekend away in London travelling by train, what better way to see the countryside. I spent the entire journey looking out the window (much to my wife's despair!). It is always nice to see how other farmers have managed in their corn drilling campaign. Comparing it against my own, you could call it self-criticism. This year the weather gods were on our side and we managed to drill corn on most of our farm. However, the drilling of winter linseed was compromised due to harvesting delays from the previous crop of spring barley.

You may have recognized the Linseed in the fields as being a distinctive blue flower. As I'm sure some of you will be aware, there are several differences in drilling seed in Winter to Spring. One being the process called vernalization. In winter drilled seed the plant goes through this process to give it the ability to flower in the spring. This process happens when the temperature drops below 1-7 degrees centigrade for 40-50 days. In this time the plant enters a state of dormancy. Winter corn has longer to grow than spring, therefore yielding better.

Other crops on the farm this year are a high yielding, short term grass. As I write this we have had 350 store lambs grazing the grass to help the grass tiller, also adding manure to the soil. The main reason for growing it is to provide the local anaerobic digester grass as a feed stock for the production of methane gas to produce electricity to the Grid. You could call it a concrete cow. Some of you may have also seen sheep grazing at Howbeck lane in early winter. This was a cover crop drilled straight after combining and we use this to help condition the soil and help retain soil nutrients from leaching through heavy rain in winter.

As Christmas came, January soon arrived along with the start of our cows calving, our first being born in the first week of January. A bonny little bull calf sired from our Simmental bull.

Many readers will have seen the flooding in early January around and about the village, in particular the flooding on Hayton/Clayworth common is potentially the worse that has been seen for 80 years. With the snow rapidly melting and combining the heavy rain the following day with nearly 60mm in less than 48 hours. In turn this puts a lot of strain on local rivers dykes and waterways. For reference, Clarborough's rainwater is conveyed by the

Internal Drainage Board (IDB) drains across Hayton/Clayworth Common, ultimately ending up at the IDB's Wiseton pumping station where it is conveyed into the River Idle. In addition, excess water from the Chesterfield Canal also discharges into the IDB system, including that which was pumped into the canal by the Environment Agency (EA) to prevent Retford flooding.

The Wiseton pumps are well past their design life at 80 years old and have been due for replacement for several years. Unsurprisingly the pumps are now starting to struggle to cope.

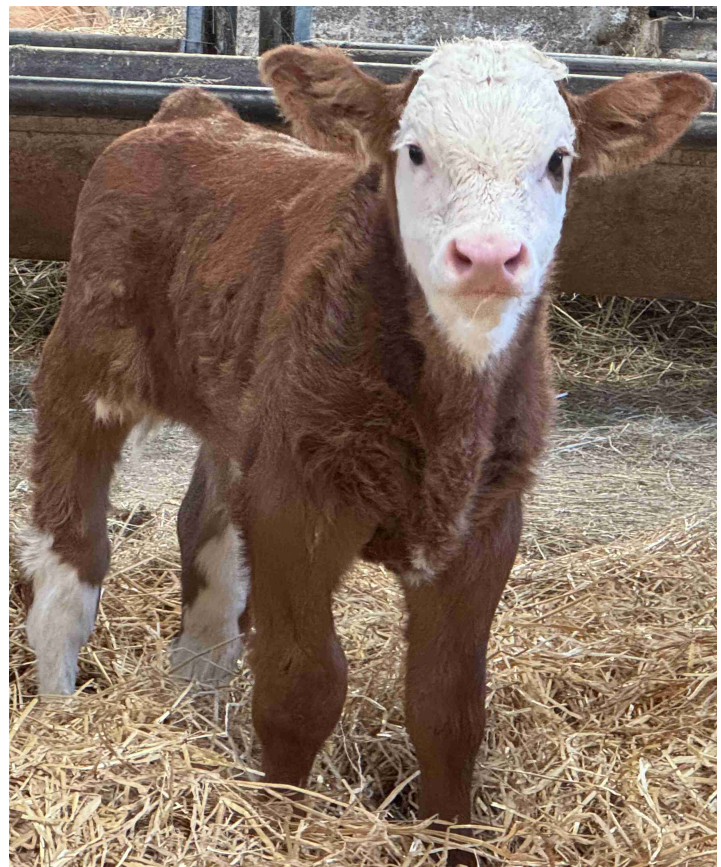
Further, there are also challenges with the River Idle. In October 2023, the River Idle reached record levels, Nottinghamshire County Council declared a major incident and two 'danger to life warnings' were issued. Some 500 homes were urged to evacuate, many residents lost their homes, key roads were closed (including the A1), habitats destroyed, and farmland devastated. A red flood warning was also issued last week for some homes in Retford due to anticipated flooding of homes from the river.

Following the flooding, the River Idle Flood Action Group (RIFAG) was formed. It now has more than 560 members. The group has been lobbying the EA and politicians for action to maintain the river so that it can convey water it historically could and should be able to. If you would like to know more about RIFAG please join their Facebook page.

Hopefully you have enjoyed reading my small article. Lets see what spring has to offer for the countryside in Clarborough and Welham.

Ross Joyce

[Below] Just in time to beat our Newsletter to our printers, Ross sent this picture of his bull calf.



Bassetlaw Hospice

Bassetlaw Hospice are excited to announce that they are participating in the Hospice UK Legacy Campaign which is being launched in February 2025.

Bonney Baggaley, the Charity Operations Manager has told us "Bassetlaw Hospice is a local charity and fundraising can be a challenge. We need to raise over £350,000 a year to provide the services for the community of Bassetlaw.

Over the last few years, legacies left to charities have declined. This is a national issue, not just a local issue so, we have joined this national campaign to help raise awareness of the impact that leaving a gift in a Will to a charity like Bassetlaw Hospice has. It is a way to help future proof the hospice services for the next generation"

There are a lot of different ways to support your local hospice, from big fundraisers, signing up to be a Friend of Bassetlaw Hospice, leaving a gift in your Will plus many more.

More information can be found on their website or Facebook page: www.bassetlawhospice.org

Your local hospice has been providing the community of Bassetlaw with hospice care services for over 30 years. Support is from diagnosis and throughout a patient's journey, support is provided to anyone who is diagnosed with a life limiting illness.

Here is some patient feedback :

"My daughter came with me and my husband to have a look around the hospice, I must admit I really didn't want to go! I don't know what I thought it would be like... but I was surprised by the whole feel of the hospice I was instantly put at ease. I soon settled into coffee mornings on a Friday my husband comes along with me, the support we both receive there is no words! I soon started therapy sessions with Sandra (she is amazing) I then started coming on a Wednesday too. The support from all staff and health care assistants have helped me out of the dark hole I had slipped into since my diagnosis they have even supported my husband with how he is feeling. I have made friends and I now look forward to my days and coffee mornings here. I don't know where I would be without the hospice and staff you have been and are mine and Tony's lifesaver." Written by Pat Bradley.



"Words cannot express the gratitude I feel towards the nurses and staff who cared for my husband with such care and compassion in the last few days of this life. Their support and kindness shown to me over these terribly sad days was second to none. From the nursing staff to the catering team. What a wonderful job you all do, how amazing you are. Thank you seems totally inadequate but thank you so much."

The hospice runs a community coffee morning every Friday from 10:00 – 12:00 so please feel free to pop in for a chat or to look around and meet the wonderful staff.



Note: the above photo was not part of one of our coffee mornings!

Road Traffic Act – Splashing Pedestrians

The Road Traffic Act 1988 refers to careless and inconsiderate driving. The law states:

If a person drives a mechanically propelled vehicle on a road or other public place without due care and attention, or without reasonable consideration for other persons using the road or place, he/she is guilty of an offence. The Crown Prosecution Service includes driving through puddles where it causes other road users to get splashed and get 'puddle soaking wet'.

Those found guilty of deliberately driving through puddles and splashing pedestrians will likely be hit with a £100 fixed penalty notice and three penalty points if caught by police.

This means that speeding up through a puddle at the side of the road to splash an unsuspecting pedestrian is actually illegal and can land you a fine of up to £5,000.

South Street Storage

Offers affordable, secure, indoor storage solutions meeting both commercial and domestic needs.

Various sized units available.

Close to Retford town centre. Easy access just off A1.

Suitable for:

- General household items
- Sports equipment
- Student storage
- Documents storage
- Bicycle storage
- Stock storage



Services: Pickup and delivery options available

Open: Mon – Fri 10:00-16:00
Saturday 10:00-14:00

01777 702 779 / 07550 002 242
southstreetstorage@gmx.com



Domestic abuse spotting the signs and accessing support

Domestic abuse can happen to anyone, regardless of age, background, gender identity, sex, religion, sexual orientation or ethnicity. However, statistics show most domestic abuse is carried out by men and experienced by women.

Across England and Wales, 1 in 4 women will experience abuse in their lifetime and on average, one woman is killed by an abusive partner or ex every five days.*

This month, we'll be signposting towards resources, guidance, and support helplines, from a variety of charities and organisations, including Refuge. For more information on domestic abuse, including how to support survivors, or access support yourself, you can visit our website, or Refuge's website, as well as learning more from other organisations.

There are several definitions of the many different types of domestic abuse which can be experienced - below are some examples from Refuge:

Definitions and types of domestic abuse

Psychological/emotional abuse: Includes name-calling, threats and manipulation, blaming you for the abuse or 'gaslighting' you.

Coercive control: When an abuser uses a pattern of behaviour over time to exert power and control. It is a criminal offence.

Physical abuse: This isn't only hitting. He might restrain you or throw objects. He might pinch or shove you and claim it's a 'joke'.

Tech abuse: He might send abusive texts, demand access to your devices, track you with spyware, or share images of you online.

Economic abuse: Controlling your access to money or resources. He might take your wages, stop you working, or put you in debt without your knowledge or consent

Sexual abuse: This doesn't have to be physical. He might manipulate, deceive or coerce you into doing things you don't want to do.

Supporting a survivor

It can be hard to know how to support a friend or loved one who is experiencing domestic abuse. Your first instinct may be to protect them, but intervening directly can be dangerous for you and them. There are ways you can help though. Read more on our website or Refuge's.

**<https://refuge.org.uk/what-is-domestic-abuse/>*

Editor's footnote: This article was taken from Neighbourhood Watch's January 2025 Newsletter – we publish copies of their Newsletter on our community website's homepage every month – look for their logo shown at the top of this article on our website's home page.

When your mother asks, 'Do you want a piece of advice?' it is a mere formality. It doesn't matter if you answer yes or no. You're going to get it anyway.

Erma Bombeck (1927-1996)

World War 2 Commemorations

This year marks the 80th anniversary of the end of World War 2. Key dates for commemorations will be 8th May for Victory in Europe Day (VE-Day) and 15th August for Victory in Japan Day (VJ-Day).



[Above] Winston Churchill waves to crowds in Whitehall in London as they celebrate VE Day, 8th May 1945. From the the balcony of the Ministry of Health, Prime Minister Winston Churchill gives his famous 'V for Victory' sign to crowds in Whitehall on the day he broadcast to the nation that the war with Germany had been won, 8th May 1945 (VE Day). To Churchill's left is Sir John Anderson, the Chancellor of the Exchequer. To Churchill's right is Ernest Bevin, the Minister of Labour.

Here are some events and activities that are planned by the Royal British Legion to commemorate the 80th anniversary of Victory in Europe (VE) Day on 8th May, 2025:

- **VE Day 80 Flag:** At 12:00.
- **Pipers and the Four Peeks:** At 18:30.
- **Association of English Cathedrals:** At 18:30
- **Cathedrals in Wales:** At 18:30.
- **Ringing Out in Celebration of Peace:** At 21:00
- **VE Day 80 Proclamation:** At 21:30
- **Beacons:** At 21:30
- **VE Day 80 Tribute:** All day.
- **British Patriotic hymn "I Vow to Thee My Country":** At 21:30
- **Lamplight of peace:** At 21:30

The Royal British Legion (RBL) will also be holding events to honor the service and sacrifice of those who served in World War II. The RBL will invite veterans, their families, and carers to join the events.

Having said that, there are other dates which have significance to different groups of people such as 27th January will commemorates the 80th anniversary of the liberation of the German Nazi concentration and extermination camp at Auschwitz (see page 11).



Turn-of-the-year at Muddy Fork

Looking back on 2024, Muddy Fork, Retford's Gardening for Wellbeing charity reflects on a year characterised by indifferent weather and a constant struggle to persuade anything to grow. Rain, cold and wind, often distinctly unseasonal, took their toll, sunshine was in short supply and the arrival of Storm Bert was



the icing (not) on the Christmas cake.

2025 provided the actual icing. The snow early in January successfully sabotaged the first working session of the New Year after the Christmas break. Thankfully this is a quiet time of year anyway. The garden is dormant, and the overwintering onions and garlic will happily sit and wait for better days. Though the broad beans have been eaten already...

In spite of all this, the Muddy Fork team starts the year in good spirits. A huge amount of routine maintenance has been done during the autumn and early winter, with beds ready for planting when the time comes and the paths improved. Hedges have been tidied up and the willow near

the stream trimmed. And on the housekeeping front, a new, bigger, shed means more (and more manageable) storage space with easier access to tools.

Muddy Fork offers a range of garden-based activity, all of it supporting mental and physical wellbeing. Getting out of doors is even more important in winter when the days are so short. Do consider whether this New Year you might like to get involved. Crafting with natural materials is also available, while the gardening tasks don't all involve heavy-duty digging – everyone works at a level which suits them. If you'd still rather stay-at-home, there are other ways you can support Muddy Fork, which depends on and values all its community contacts.

For further information, if you might be interested in volunteering, or could make a donation, check out the website at www.muddyfork.org while referrals, whether self-referrals or on behalf of someone else, can be made directly to rose.muddyfork@outlook.com. Visitors to the garden are always welcome.

Clarborough & District WI



2024 has been a good year for the WI, we have seen our numbers grow as we have welcomed new members. 2025 looks very promising for us as we now have our new programme in place with a variety of interesting speakers and activities.

- 13th January "Shirt making" by Rev Mark Cantrill
- 10th February "Talking Rubbish" by Lesley Taylor
- 10th March "Tunnel 57" by Ralf Schweinem
- 14th April "Beekeeping and Honey" by Rebecca Kay
- 12th May Annual Meeting and Resolutions
- 9th June Birthday meeting
- 14th July Giddy Kipper Plants with Joanna Underdown, at this meeting we will host our twin WI from Hook in East Yorkshire. This meeting is at Hayton Village Hall.
- August No meeting
- 8th September "Life Afloat" by Christine Abbott
- 13th October "Saving lives with CPR" by Bruce Barnett
- 10th November "The Art of crafting Christmas cards and tags" by Caroline Heslam
- 8th December Christmas Lunch

Our meetings are held in the Village Hall, Clarborough and commence at 14:00. Visitors are very welcome with an entry fee of £5 which includes a raffle ticket and refreshments.

Come along and join us you will be amongst good company and make new friends.

Wishing all readers a Very Happy and Peaceful New Year.

*Lucy Richardson
Secretary (07966 452 249)*

**St. John the Baptist Church
Clarborough February 2025**

From now on there will be a service in Clarborough church every Wednesday evening at 19:30. Some of these may be conventional some innovative and possibly there may be music involved. There will also be opportunities to ask questions, or perhaps you would prefer to just listen and think.

On Sundays we continue to share venues with the Clays Group. HC= Holy Communion EP=Evening Prayer

February

- 2nd 10:30 Sturton HC 15:30pm Hayton Candlemas HC
- 9th 10:30 Bole HC
- 16th 10:30 Clarborough Church HC
- 23rd 10:30 S. Leverton Institute HC
- 15:30 Clarborough Church EP

There is no more information available at this time so please check the village website or ring 07989 895 813 for the latest information.

The way I see it, if you want the rainbow; you gotta put up with the rain.
Dolly Parton (1946-)

Scope Spray Services

- Local paint spray specialist in :
- Refurbishing existing fitments (kitchens, bedrooms, studies and more)
- Door replacements
- Brand new fitments - all designed, made, supplied and installed
- Any colour choice - we use 'solvent' based which is highly durable & superb finish

"We have used Darren in previous homes and have always been delighted with his work. So, when we decided to renovate our Cottage he was our obvious choice to help design and fit our kitchen and second bedroom. As before, a first-class design and meticulously fitted. Thank you so much. Peter & Julie Williams"

Contact us now for your free quotation :

Telephone: 07999 489 624

**Email: scopesprayservices@gmail.com
or find us on facebook**



Clarborough & Welham Parish Council Meetings

- ➔ 17th February 2025
- ➔ 31st March 2025
- ➔ 12th May 2025
- ➔ 23rd June 2025
- ➔ 28th July 2025
- ➔ 8th September 2025
- ➔ 20th October 2025
- ➔ 1st December 2025
- ➔ 12th January 2026

Meetings are all held at Clarborough Village Hall, Main Street, Clarborough DN22 9LN. Meetings are open to the public and start at 19:00. An early part of each meeting gives members of the public an opportunity to ask questions after which they are spectators unless the Chairman gives them permission to speak during any of the meeting Agenda items.

For Clarborough & Welham Parish Council's website go to :

<https://clarboroughandwelhamparishcouncil.gov.uk/>

All the world's a stage, and all the men and women merely players.

William Shakespear (1564-1616)

This Newsletter has a much wider 'reach' than it's parochial name might suggest

Clarborough & Welham Community Newsletter is now an established feature of local life - and much wider than that! Published quarterly (600 copies), it is currently a 24-page, A4, glossy, full-colour 'journal' containing a mix of public information, articles and community group notices. Distributed free to every household in Clarborough and Welham by our team of volunteers.

Clarborough Primary School also provides copies through Parent Mail to families who live outside our immediate community. We also place batches in Retford (Denman) Library, Bassetlaw Action Centre, Bassetlaw Museum, Retford Arts Hub, and also The Aurora Centre and BCVS (Bassetlaw Community & Voluntary Service) both these two latter in Worksop. Copies are also placed (for 'passing trade') at Clarborough's Kings Arms. Many pages are also read online since our community website

(www.clarborough-welham.org.uk) contains current and back issues of our Newsletter right back to Spring 2010. We are also grateful to BCVS who incorporate copies of our Newsletter in their weekly Bulletin which go to well over a 1,000 destinations across the area and even wider than that! Finally, we are also grateful to Michael Carnall who manages our Village Hall's Outreach Post Office, as well as many other such 'outreaches' across our area, for distributing copies to customers in other villages.

Editor



Call 01777 702684 for more information or email us at enquiries@durhamsheating.co.uk

Some things are better kept to yourself.



What do you share online?

Get Safe Online is the UK's leading source of information and advice on online safety and security, for the public and small businesses. It is a not-for-profit, public/private sector partnership backed by law enforcement agencies and

leading organisations in internet security, banking and retail. See their website: www.getsafeonline.org

For their quick over view of key aspects of keeping yourself and your family secure by being aware of how to use online services so that others might be able to make use of the information. These 'uses' could include house burglary if you hav advertised that you are away or even allow someone to piece together information from various posts to steal your identity – and loads of your money!

Oversharing is a term used to describe just such cases of leaving too much personal information online.

See our community website (www.clarbrough-welham.org.uk) home page and click on the above image.

Editor

'News' – how did this term come about?

The English word "news" developed in the 14th century as a special use of the plural form of "new". In Middle English, the equivalent word was *newes*, like the French *nouvelles*. Similar developments are found in several other languages.

The history of how what we now understand as 'news' is a vast and fascinating topic as its methods of distribution as well as issues such as objectivity, bias, propoganda... the list is almost endless!

Editor



made in THE MUSICAL Dagenham

Book by
Richard Bean

Music by
David Arnold

Lyrics by
Richard Thomas

Based on the Woolley / Karlsen / Number 9 Motion Picture
This amateur production is presented by arrangement with Music Theatre International
All authorised performance materials are also supplied by MTI. www.mtishows.co.uk

8TH TO 10TH MAY 2025

AT THE MAJESTIC THEATRE




East Retford RUFC

Established in 1952, the East Retford RUFC is today proud to host senior men's & senior women's teams, plus a thriving mini & juniors' section. We are so grateful to our players, volunteers, members & supporters for keeping this well-established grass roots club going. Special thanks for a great start to 2025 goes to player and sponsor, Dan Rees at The King's Arms, Clarbrough, for providing a slap-up breakfast for our lads as they headed away to Grimsby for the first game post-Christmas. It has also been wonderful to see some new faces dust off their boots or try something new and get fit for the New Year.

EAST RETFORD 1ST XV FIXTURES 2024-25

FEBRUARY 1	OLLERTON AWAY	MARCH 8	SKEGNESS HOME
FEBRUARY 15	LINCOLN II HOME	MARCH 22	SLEAFORD AWAY
MARCH 1	MARKET RASEN & LOUTH II AWAY	APRIL 5	WORKSOP HOME

Send us a DM to join the team today. #GreenArmy

However, on a wider scale it is worryingly clear that rugby as a sport at all levels is in decline. Votes of no confidence in the RFU executive chief, "excessive bureaucracy and poor governance"

higher up the chain, plus a general lack of support for

rugby at a grass roots level has had a significant impact on clubs across the country, & Retford is no exception

Most importantly, we need players, specifically senior men, aged 17+, for our club to survive (training on Tuesdays from 18:45).

We hope that there will be considerable change within the RFU, offering help & advice for clubs off the beaten track. We are also open to new volunteers with fresh ideas, able to breathe new life into the 'Green Army', and of course, new members and sponsors are always welcome.

EAST RETFORD WOMEN 1ST XV LEAGUE FIXTURES 2024-25

MARCH 9	LONG EATON HOME	MARCH 23	SILEBY TOWN AWAY
APRIL 6	GAINSBOROUGH HOME	APRIL 20	MARKET HARBOROUGH AWAY

Send us a DM to join the team today. #GreenArmy

For more information, please email info@retfordrugby.com

It's not whether you get knocked down, it's whether you get up.
Vince Lombardi (1913-1970)

Retford Chiropractic Wellness Centre

Serving Retford and surrounding areas for over 30 years

At Retford Chiropractic Wellness Centre, we believe everyone deserves the opportunity to achieve their full health potential. Our mission is to support you and your family on your journey to optimal wellness with expert care and a compassionate approach.

As a fully GCC-registered practice, we adhere to the highest professional standards, ensuring you receive safe and effective care tailored to your individual needs. Let us help you take the next step toward a healthier, happier life.

Our Services:

- Chiropractic
- Neuro Rehabilitation
- Acupuncture
- Photobiomodulation
- Massage
- Hypnotherapy
- Food Sensitivity Testing
- Beauty Treatments
- Endoscopic Microsuction (Ear Wax Removal)

REGISTERED

Choosing the right treatment can feel overwhelming, which is why we offer a FREE chat with any of our practitioners to help you find the best option for you. This session helps you explore your options and receive expert guidance tailored to your needs.

Contact Info:

01777 710 720
www.retfordchiro.co.uk
67 Grove St, Retford DN22 6LA

Holocaust Memorial Day 2025

At the National Holocaust Museum, we start 2025 with Holocaust Memorial Day (27th January). There are a plethora of events happening across the world & this year is especially poignant as it marks 80 years since the Russian army liberated the most notorious extermination camp in history: Auschwitz-Birkenau.



We have designed a specially curated programme of exhibition, film & live speakers to honour the last survivors of that unimaginable place & time. To remember the victims but also, to ask tough questions of ourselves today.

To discover 'What's On', do head to our website: holocaust.org.uk/whats-on for more information.

A lot of people ask the question, how did the National Holocaust Museum come to be in rural Nottinghamshire? Well, the simple answer is following a family trip to Yad Vashem (Israel's National Holocaust Museum), The Smiths, humble Christians from Laxton, were both stunned & challenged by the information gathered whilst away. So much so that they felt Holocaust education should be taught, discussed & understood by all. Led by the two sons, James & Stephen, the family converted their own home into a centre of learning & began welcoming Holocaust survivors from across the globe into a safe space to share their experiences with a public audience. Some 30 years later, following many years of fundraising & incredibly hard work, we proudly capture the essence of the originally entitled Beth Shalom (House of Peace), & have evolved into an accredited National Museum, with a global family of supporters. Our sole purpose: to communicate the memory of the Holocaust to grow a community of 'critical thinkers', able to question the misinformation, stereotypes & conspiracy theories which are driving today's racist hate.

Our work expands beyond the beautiful memorial gardens of the museum, filled with over 1000 white roses, each dedicated to loved ones lost in the Shoah. We work in collaboration with Notts Police to prevent hate crime; with universities & councils to deliver our 'Racism Response Unit', educating staff members within institutions on how to spot & reduce anti-Jewish racism; & we have nationally touring exhibitions, plus our newest addition, *The Vicious*

Circle, currently in London, travelling internationally later in 2025.

Events wise, we are delighted to welcome our very own Debbie Moss for an author talk & book launch of 'Angel's Teeth' on Sunday 2nd February. We also have a fantastic essay writing opportunity for 16–18-year-olds in memory of our beloved colleague, the late Karen Becher, with a support webinar on Tuesday 25th February. On Sunday 23rd March, we welcome back the fabulous & bestselling author of 'The Dressmakers of Auschwitz', Lucy Adlington, for an exclusive preview of her latest book, 'Four Red Sweaters'.

So, from humble beginnings to a host of activities & events. Currently undergoing a multi-million-pound redevelopment project, thanks to our donors, we look forward to welcoming you to an all-new Beth Shalom in 2025. Open Sunday-Friday, 10:00-16:30.

Chesterfield Canal Trust's Wildlife Watch



Rod Auton, Chesterfield Canal Trust Secretary and Publicity Officer keeps us well informed with Trust newsletters and also the fascinating Wildlife Watch photo collection, latest example is of a Harris's Hawk *Parabuteo unicinctus* :



Rod Auton saw this juvenile Harris Hawk being taken out for a walk at Hollingwood Hub.

To explore many more of these Wildlife Watch photos, visit community website (www.clarbrough-welham.org.uk) and, from the home page's menu follow **Local Environment > Chesterfield Canal**.

Editor

LAWNMOWERS

Tony Halford



Plant & Grass Machinery Specialist

Tony Halford Lawnmowers, Nelson Street, Retford, Notts DN22 6LP

Tel. 07976 941 407

Email: thlawnmowers@hotmail.co.uk

The Allegra Voice Choir

Do you love to sing? Looking for a warm, welcoming group to share your love of singing and music? Then the Allegra Voice Choir is the perfect place for you! Come along and be part of something truly special.



Whether you are a seasoned singer or just starting out, we welcome all levels of experience. We sing a diverse repertoire, from timeless classics to contemporary hits. Our friendly group meets every Tuesday evening during term time from 19:00 -20:30 at St John's Church, Clarbrough DN22 9NA. The picture shows our informal concert at

Christmas for our family and friends as a thank you for all their support. Our aim is to bring fun and joy to us and our audiences. We are currently working on new material so now is a great time to consider joining as we are all starting something new together. Gentlemen and ladies, please

don't be shy!!!! Drop by one of our rehearsal and feel the magic.

Judith Smith
07785 521 838



[Above] Another of Rod Auton's latest Chesterfield Canal Trust's Wildlife Watch images: Swans in Shireoaks Marina acting as guards of honour for Hugh Henshall's Santa Special cruises

ReNew
Carpet & Upholstery Cleaning



- High Powered Portable Equipment
- Commercial & Domestic Services
- Stain Removal / Reduction
- Satisfaction Guaranteed

- Dry in Hours NOT Days
- 'One Off' or Regular Cleans
- Fully Insured & Experienced
- CRB Checked Operators

Please Call Mob: 0755 000 2242

ANDI GRAY

PAINTER & DECORATOR



- INTERIOR & EXTERIOR
- QUALITY PAPER HANGING
- DOMESTIC & COMMERCIAL

- QUICK & QUALITY TURNAROUND ON RENTAL PROPERTIES

07837 370827

andigraypropertyservices@hotmail.co.uk

A LOCAL TRADESMAN ON YOUR DOORSTEP

A professional service to a high standard



Clarborough Village Hall

Clarborough Village Hall is a popular venue for a range of regular, weekly, activities ranging from physical exercise and dancing groups to table tennis and indoor bowls. Local scouts, cubs and beavers also meet during school term-times and a weekly CCC (Coffee, Cake and Chats) social morning welcomes folks from all around our area each Thursday morning from 10:45-11:45.

Add to all of this weekend provision for bookings of parties plus various slots for Parish Council, W.I. and other local group's meetings PLUS our Outreach Post Office on Monday, Tuesdays, Thursdays and Friday mornings. Our monthly Table Top Sale event on the first Saturday morning of each month will provide any visitors appreciation of how much of a community focus Clarborough Village Hall provides just north of Retford. Clarborough Village Hall is a single story, easy access building that has undergone regular updates in recent years as can be seen from this view of the main hall:



part way down the driveway that opens directly opposite the Kings Arms pub on Clarborough's Main Street (A620 Retford to Gainsborough). Hall's postcode is DN22 9LN. The arrow sign shown in the photo above points to the main car park behind the hall.



When not in use, the stage curtains are usually drawn...



...but this picture shows the LED outer stage lighting recently installed to enhance the on-stage technical facilities.

Tables and chairs for use in various events are stored in the room to the right of the stage shown above and come in two convenient sizes – four or six seats. The hall has an official capacity of 125 seated or 250 standing.

Clarborough Village Hall lies well back from the main A620 through Clarborough – the above photo was taken from

Our hall has several spaces that can be available to hirers:

- The main hall shown in the images to the left.
- The main hall's stage and control area.
- The Halford Room shown at the front-right of the above photo. This is also the venue used by our Outreach Post Office as well as many evening meetings. It can be opened as an extension to the main hall to provide extra space.
- A well-equipped kitchen with a 'serving hatch' into the main hall.
- A separate bar area also opening into the main hall.

Access from the rear car park is essentially level (unlike the sloping front of the building) and uses the double doorway shown at the left of the top photo to the left – making wheel chair access easy from the car park. Toilet facilities lead from the entrance hallway and include disabled and baby changing facilities.

Our hiring rates are surprisingly reasonable:

£10.00 per hour for regular hirers

£14.50 per hour for casual hire and...

Amazing £45.00 for 4 hours for a children's party, or similar events, booking. This usually allows 1 hour setup, 2 hours for the event and 1 hour for tidying up.

Contacts CDCA Hiring Secretary: 07442 105 268 or clarboroughvillagehall@gmail.com

Clarborough Village Hall is actually managed by Clarborough & District Community Association (CDCA) which is a Charity formally registered with the Charity Commission – Registered Charity No. 502076.

As a registred charity, we are managed by a board of Trustees which in recent years has provided us with some significant challenges in that the number of volunteers to take on our management responsibilities has reduced. However, we are really pleased to be able to announce that two new Trustees were appointed at our November 2024 meeting – Lyn Freeman and Paul Kashdan.

**Greg Herdman
Chairman, CDCA**

Fraser McFarland Supports British Farming

I wish to express my strong opposition to the Labour government's proposed family farm tax. This measure has raised significant concerns within our rural communities, particularly in areas like Clarborough and Welham, where local farmers play an essential role in our social and economic fabric.

Local farmers are the backbone of our rural economy. In Clarborough and Welham, agriculture is not just a means of livelihood; it is a way of life. Farmers contribute significantly to the local economy by providing jobs, supporting local businesses, and sustaining the overall economic health of our community. Imposing a family farm tax threatens to undermine this vital sector, potentially leading to job losses and reduced economic activity. Small family farms, in particular, operate on thin profit margins, and any additional financial burden could prove devastating.



Moreover, our farmers are custodians of the landscapes and environment that define our rural areas. They maintain the countryside, preserve biodiversity, and implement sustainable farming practices that benefit both the ecosystem and the community. By managing their land responsibly, farmers contribute to the aesthetic and environmental quality of our surroundings. The proposed tax could discourage these farmers from investing in sustainable practices, as they may be forced to prioritize immediate financial survival over long-term environmental stewardship.

The social fabric of our rural communities is another critical aspect to consider. Farmers often serve as community leaders, participating in local events and initiatives that strengthen community ties. In Clarborough and Welham, these individuals are not just food producers; they are our neighbours, mentors, and role models. The family farm tax could strain these relationships by creating financial pressures that lead to isolation or withdrawal from community engagement. We must preserve the strong connections that exist in our rural areas, which are essential for fostering a sense of belonging and mutual support.

Food security is a pressing concern that cannot be overlooked. Local farmers play a crucial role in ensuring that our communities have access to fresh, healthy produce. The more we rely on large-scale industrial farming and the importation of food, the more vulnerable we become to supply chain disruptions and global market fluctuations. Supporting local agriculture by opposing the family farm tax is a step towards enhancing food sovereignty and resilience in our communities.

Furthermore, this tax could disproportionately affect smaller family-run farms, which are already facing numerous challenges, including fluctuating market prices, rising production costs, and climate change impacts. Larger agricultural enterprises may have the resources to absorb such taxes, but small family farms often do not. This could lead to the consolidation of land and resources in the hands of a few, eroding the diversity and character of our rural landscape.

In conclusion, my opposition to the Labour government's family farm tax is not merely about resisting a financial burden; it is about recognizing and valuing the essential contributions of local farmers to our communities. From economic stability and environmental stewardship to social cohesion and food security, the role of farmers in Clarborough and Welham cannot be overstated. As we move forward, it is crucial to support policies that empower our local farmers rather than penalize them, ensuring that our rural communities can thrive for generations to come.

*Cllr Fraser McFarland
District Councillor for Clarborough, Clayworth, Hayton,
Welham and Wiseton*

computer problems?

I'll come to you at your home.

I specialize in solving home **computer problems**; from **printers**, the **internet (WiFi)** and **viruses** to your **emails** and **software issues**. Plus all other computer related headaches, at your home.

I can also help if your computer is **running slow** and needs a **clean-up**, an **upgrade** or you need help or advice to **set up** a new computer. I'm also happy to help with **tablet** or **smartphone problems** & set up.

20 Years Experience ★★★★★

Call or text James today
07568 174 474
Your local and friendly computer man

Is this Art? Our new Exhibition at Retford Arts Hub

Have you visited the new gallery at Retford Arts Hub? If not, you should! It's a great place to see fabulous art by local artists and artisans, relax in a quiet and peaceful environment, and be inspired to create your own art or purchase a piece of individual art.

Our new exhibition starting on 1 February and running until 14 March is called.....Is This Art? It is an opportunity to see innovative, creative and possibly controversial 'art' which we think will be different to the usual exhibitions on offer in Retford.



A visit to the Royal Academy Summer Exhibition by some of our volunteers sparked the idea. There were some amazing and different pieces of art there.

Member artists and artisans have been given free reign to approach their work in a different way, to challenge the concepts of what art is, to

encourage discussion on art in its many forms with the items they choose to exhibit.

If you are an artist/artisan and wish to exhibit your work, you'll need to be a member "Friend" of the Hub (£20 on joining plus sales commission), then you will be able to exhibit in this and all our future exhibitions.

There are some great volunteer opportunities available at the Hub too. If you are new to the area, newly retired or maybe looking for a new interest or even wanting to add to your CV, we can offer you the chance to join our team. Volunteering can be a chance to make new friends and enjoy working alongside others while supporting local artists and makers too. Putting something back into the local Community maybe appeals to you? Then, maybe this opportunity is for you?

For more information on our exhibitions, Workshops, becoming a "friend", or volunteering, please call in at the Hub and have a chat with us.

Retford Arts Hub, 11, Churchgate, Retford.
Email: info@retfordartshub.com
Tel: 01777 860 414
Facebook/Instagram: [@retfordartshub](https://www.facebook.com/retfordartshub)

Editor's footnote: Retford Arts Hub's full programme of 2025 Exhibitions plus forthcoming Art & Crafts Classes see community website (www.clarbrough-welham.org.uk). From homepage go to **Out-and-About > Retford Arts Hub.**

Clarbrough's Kings Arms

January 1st marked eight months exactly since we opened our doors for the first time since we signed a 10 year lease..... it feels like yesterday! We are overwhelmed with the support we've had from the village in that time. We will continue to develop the pub and the beer garden going into spring summer to ensure our village pub attracts families from all over.

We bravely took on the responsibility of the Clarbrough Christmas Fayre and the event was amazing. People came from far and wide to support us and overall the night was a great success. Our committee that we assembled were fantastic and we already know how we can improve on the event for next year..... We were also able to raise £1000 overall for Lincs & Notts Air Ambulance which we will be presenting to them in late January.



Our Football Team is currently unbeaten in the league and are competing in 2 cups, one of which we are in the semi final of.

Our food menu is going strong with our home cooked offerings of Scotch Eggs, Sausage Rolls, Soups and our butchers cobs. We will expand on this as the year goes on!

From February we will be back to opening from 12pm every day, 7 days a week

Hopefully 2025 will be a great year for the village and we at The Kings Arms will hopefully be a big part of that!!

Dan Rees

Do you require any landbased training?

North Notts Training Group

"Cost effective professional training for a safe and efficient tomorrow"

Health & Safety, Pesticides, Chainsaws, Fork Lifts, First Aid, Abrasive Wheels, Vermin Control, plus e-learning



info@nntg.co.uk
 07855751689
www.nntg.co.uk





Vulcan to the Sky Trust confirms their Vulcan B2 VH558 has secured its future at Doncaster-Sheffield airport.

The iconic Vulcan XH558 has been based at Doncaster Sheffield Airport since 2011. After its previous lease with Peel Holdings was due to expire in June 2023, the charity were looking for a new home when news of the airport's imminent closure emerged.

Conversations with City of Doncaster Council have continued to take place and as the council prepares to announce its new operator the charity has had its longer term future at the airport confirmed in principle by the council.

We await news of the new airport operator with some excitement since we have been regular users of the airport at Finningley for many years prior to its closure. That Vulcan XH558 can now look forward to its future at the airport is great news as she had RAF links with what was, previously, RAF Finningley.

The Avro Vulcan was one of three so-called V-bombers (Vulcan, Victor and Valiant) which formed major component of Britain's Cold War deterrent. Instantly recognisable by its delta-wing and also its distinctive 'howl' it entered RAF service in 1956 and was retired in 1984.



The photo above was taken at Finningley in October, 2016 during a monthly engine test visit. Unfortunately I had only a still camera because as our group stood some distance directly ahead we waited for our guide to signal to the pilot for him to power-up one of the Vulcan's engines to full thrust – the purpose of such tests is to ensure everything works 'as normal'.

Because the aircraft was, fairly obviously, fully braked and wheel chocked and also has a pretty tall undercarriage, when one of its Bristol-Siddeley 301 engines was powered up, the aircraft bowed to our visitor team!

**Editor
Founding Guardian
Vulcan to the Sky Trust**



Bassetlaw Action Centre was among the 31 groups and organisations who received a share of the Community Voluntary Grant funding, being awarded £28k to spend on volunteer recruitment and a project focusing on farmers.

Lynn Tupling from BAC said: "Volunteers are the lifeblood of our organisation. The UKSPF Community Grants funding has allowed us to appoint a dedicated volunteer recruiter to enable us to not only recruit volunteers but also to raise the profile of the services of the Bassetlaw Delivery Partnership.

Among other charities benefitting from grants of up to £15k are: Nottinghamshire Mind who will be delivering more Well Cafés in the district and Worksop's Men in Sheds who aim to provide more support to older men.

Editor's footnote: UKSPF = UK's Shared Prosperity Fund which will ramp up to £1.5 billion in 2024-25.



Caroline's Creative Crafts

Cards and papercraft for all occasions
For beginners and experienced crafters

4th Wednesday of the month.
Clarbrough Village Hall (Halford Room).

10 am -12 midday
£10 Includes all materials, tuition and refreshment.



Contact me for any further details

Caroline Heslam
cmheslam@gmail.com
07807 710732
carolineheslam.stampinup.net





Real Relationships Part-Time Job

- ✔ Part-time.
- ✔ High Quality in-house training.
- ✔ Membership to health scheme which includes 24/7 access to a GP.
- ✔ Travel, waiting & fuel allowances.
- ✔ Careful one to one matching.
- ✔ No 'rounds'.
- ✔ No visits under one hour.
- ✔ Enjoy great Client relationships.
- ✔ Advanced training options.
- ✔ Enjoy your work!

Call now for a friendly chat 01777 712629

enquiries.retford@homeinstead.co.uk

www.homeinstead.co.uk/retford-gainsborough



Each Home Instead franchise is independently owned and operated. Copyright © Home Instead® 2022.

Microsoft's only route to upgrading Windows 10 often costs a fortune! There is a simple alternative...

- Microsoft announced a long time ago that they would stop providing Windows 10 users with both updates and security patches from 14th October, 2025.
- Windows 11 updates routes are usually impossible for laptops and PCs much more than 3 years old because they lack certain hardware features.
- If your laptop/PC can't be updated, a new device supporting Windows 11 will cost you anything from around £400 (basic laptop) upwards.
- While most users of Microsoft or Apple computers think of them as 'world dominating' operating systems (OS) they are, in fact, outflanked by some of the best known Linux platforms such as Android on smartphones and ChromeOS.
- Linux is the leading operating system on servers; over 96.4% of the top one million web servers' operating systems are Linux,
- Linux is also used on all of the world's 500 fastest supercomputers.
- Linux OS comes in a range of flavours – distros (distributions), the most popular is called Ubuntu. Your Editor has been using Ubuntu Linux on one of his PCs for quite a few years.
- FREE apps that can read and write files such as those from Microsoft's Office suite or Adobe's Photoshop include LibreOffice and Gimp all of which come from the Open Source movement – costing nothing!
- A recent report by StatCounter, an online analytic organisation, reported that almost 63% of Windows computers are still using Windows 10 while just over 33% have Windows 11. If this 63% all intend to move to Windows 11 by mid-October 2025 just imagine the rush – and how prices will respond!

So, how does this help readers with Windows 10 computers with the ending of Microsoft's support this coming October? Well, this was exactly the sorts of considerations that we explored when Clarborough & Welham IT Group suspended classes at Clarborough Village Hall as the Covid-19 crisis unfolded. Microsoft had already announced that their support for Windows 10 would end in October, 2025.

At that time, your Editor had already received advice from both ex-colleagues and ex-students that exploring the possibilities of the Linux OS might be a good plan. To cut a long story short, the result was a PC equipped with Ubuntu Linux that (now) sits alongside a Windows 11 PC in my office. Since then we have had our eight Clarborough & Welham IT Group laptops converted to Ubuntu Linux with key open source apps installed too.

You are probably aware that your Editor also manages Clarborough & Welham community website (www.clarborough-welham.org.uk) which has become one of the most significant information hubs in the area – it currently has some 240 pages servicing nearly 400 visitors per day – 365 days per year! Management of both the website and also this Newsletter means that information flows into my *inboxes* in pretty much every format that is available. For text items this

often includes Microsoft Word documents, Excel Spreadsheets but since both my Windows 11 and also Ubuntu Linux PCs have both Apache Open Office and Document Foundation's LibreOffice (both based on open document format file-types) these effortlessly convert Microsoft files into their own format – and can do the reverse if correspondence with outside organisations are required.

Much the same applies to our use of Open Source Gimp image editor which can handle any available image file-types – and both of these suites can also generate pdf (portable document format) files for effortless, secure, communications.

The above notes have, several times, referred to the concept of **open source** which deserves a bit of explanation. In computing terms, **source** is a description of the computing code that creates the application itself – it is the **source** of the application (app).

The word **open** in this sense is the opposite of what is generally known as copyright – in other word, something that restricts (usually by a serious penalty) copying or modify of an apps source code. Open source permits copying, duplicating, distributing of source code in almost every possible way – and such items are FREE.

Which leads to another very productive learning programme – 'Welcome to Open Source'. This topic has almost limitless possibilities since open source applications are available for every aspect of computer-based activities. The examples of so-called office apps similar to Microsoft's Office, image handling such as photos, videos and well as sound/music processing all represent just a small portion of the vast pool of open-source apps that are available.

So, as Microsoft's closure of support from Windows 10 approaches, this could be a good time to become familiar with the Ubuntu Linux alternative – both to maintain your IT connectivity but also to enhance your wider skills.

If this does seem interesting, see **IT Group classes introducing Ubuntu Linux** article of page 19...



Ubuntu Linux is produced by the British company Canonical Ltd together with a vast global network of voluntary developers. Ubuntu updates are provided by Canonical every six months while Long-term support (LTS) versions are released every two years. Basic installation of either version include basic desktop utilities together with Firefox web browser. A huge range of other open-source applications can be accessed and installed from the main desktop.

LTS versions are released every two years and are supported for five years. LTS releases get regular point releases with support for new hardware and integration of all the updates published in that series to date.

Editor

When you give joy to other people, you get more joy in return. You should give a good thought to the happiness that you can give out.

Eleanor Roosevelt (1884-1962)

IT Group classes introducing Ubuntu Linux

With all of the foregoing it now comes round to support for readers – and anyone else you feel would be interested – to get onboard with our IT Group classes for 2025. We are currently planning our first block of our customary 5 week IT classes of 90 minute based on our Ubuntu Linux laptops. This will give users 'hands on' experience which will confirm that moving from a Windows environment to the Ubuntu Linux one is remarkably straightforward – even intuitive. However, these classes will depend on an economic group size, so we intend to hold a one-off class (90mins) on Saturday 14th June (13:00-14:30) cost £5 as a hands-on introduction to Ubuntu Linux – see booking below.



[Above] Desktop of most recent LTS – Noble Numbat.

Linux is increasingly of interest to anyone from business (either as employee or employer) in that it will encourage 'transferrable skills'. This latter is a key element in updating someone's CV.

We will have contact details for local IT specialists who can upgrade your Windows 10 (and earlier versions) laptop or PC to Ubuntu Linux for remarkably low fees!

Booking is advised since space is limited. Contact Greg : 01777 700 918 or clarbroughwelham@gmail.com

Editor

Man is still the most extraordinary computer of all.

John F. Kennedy (1917-1963)

Clarbrough Post Office

Opening hours:

Monday:	09:00-12:30	 All usual main P.O. services
Tuesdays:	09:00-12:30	
Wednesdays:	Closed	
Thursdays:	09:00-12:30	
Fridays:	09:00-12:30	

Halford Room, Clarbrough Village Hall

Main Street, Clarbrough, Retford, DN22 9LN

If you have any queries, do not hesitate to contact:

Michael C.Carnall 07836 375 808 / 01427 884 469

michaelcarnall@yahoo.co.uk

Tenant Drop-in Session



Bassetlaw District Council are holding regular drop in sessions at Hallcroft Family Hub that give families in the area easy access to support with housing issues.

 **Hallcroft Family Hub**

2 Whitaker Close, Retford, DN22 7QH

 **9:30am - 12noon**

On the following dates:

7th February 2025

7th March 2025

4th April 2025

For more info please contact:

anita.fairweather@bassetlaw.gov.uk

joshua.booth@bassetlaw.gov.uk

Tel: 01909 533263



 Sign up to our digital newsletter - [Bit.ly/BassetlawNews](https://bit.ly/BassetlawNews)

 @BassetlawDCHousing

Goacher's Farm Shop

Wood Lane, North Wheatley



The only traditionally grown Wheatley fruit.

Picked and PYO
**Strawberries, Raspberries, Cherries,
Plums, Apples, Pears etc**
Taste the difference!
Fresh and frozen

Also available;
**Asparagus, Honey, Jams,
Chutneys, Potatoes, Eggs,
Juices and Home baking**

Now serving hot drinks

For opening times please

Phone; **01427 880 341**

or www.goforgoachers.co.uk



New Year, New You: Volunteer and make a difference!

Are you passionate about giving back to the community and creating positive change?

We can help you with your volunteering journey and support you to make a difference.

Check out some of the latest opportunities on our website

Garden Project Helper

Grove Street Methodist church is renovating it's garden space and would like volunteers to assist in the renovation.



Tea Party Group Coordinator

This is an administrative role that requires planning and scheduling, you must be comfortable organising events with volunteer hosts, socialising & communicating.



Welcome Desk Volunteer

Volunteers are needed to join the welcome desk team at the Crossing Church and Centre, Worksop.



Home Companion Volunteer

Companionship volunteers provide emotional & practical support, short breaks for carers and help with signposting.



Worksop Priory & Gatehouse Community Trust

Urgently need volunteers - email info@wpgct.org.uk



Green Generation is an initiative that aims to engage young people in volunteering to develop a sustainable, inclusive and healthy voluntary & community sector in Bolsover and Bassetlaw.

We want to hear from

- Community or voluntary groups that would like host young volunteers or have a 'green idea'.
- Young people aged 18-25 who are interested in the environment and/or the local community.
- Individuals that are interested in starting a group or have a 'green idea'.

Pop us an email at greengeneration@bcvs.org.uk



involve@bcvs.org.uk



www.bcvs.org.uk



01909 476 118

Clarborough Village Hall weekly timetable

Monday	Post Office 9:00-12:30 (Halford Room)	10:00-12:00 <i>Table Tennis</i>	14:00-16:00 <i>Indoor Bowls</i> <i>W.I.</i> (Second Monday of the month)	19:00-21:30		
						Parish Council Dates Posted on notice boards and website
Tuesday	Post Office 9:00-12:30 (Halford Room)	10:00-11:30 <i>Chair-based exercise</i>	14:00-15:00 <i>Pilates</i>	19:00-21:00 <i>Table Tennis</i>		
Wednesday				14:00-16:00 <i>Retford U3A Table Tennis</i>	18:00-20:00 <i>Pilates</i>	
Thursday	Post Office 9:00-12:30 (Halford Room)	10:45-11:45 CCC Coffee Morning		SCOUTS		
				17:00-18:00 <i>Beavers</i>	18:00-19:30 <i>Cubs</i>	19:30-21:00 <i>Explorers</i>
Friday	Post Office 9:00-12:30 (Halford Room)	10:00-12:00 <i>Table Tennis</i>	12:00-16:00 <i>Hall Maintenance</i>		18:30 – 19:30 <i>Burlesque Dancing</i>	
Saturday	9:30-12:00 <i>Table Top Sale</i> (1 st Saturday of each month)		13:00-14:30 <i>IT Group</i> <i>14 June 2025</i>			
Sunday						

Please contact :

Some of the above may have changed, so contact **07442 105 268** (phone or text) or e-mail clarboroughvillagehall@gmail.com for any enquires or bookings.

Updated 20th January, 2025

Details may change .



Happy to Chat Benches Tackle Loneliness in Bassetlaw



MUSLIM CHARITY

Muslim Charity and Bassetlaw District Council are excited to



Bassetlaw DISTRICT COUNCIL
North Nottinghamshire

announce the installation of nine 'Happy to Chat' benches across Bassetlaw to address the growing concern of loneliness among residents in the district.

According to census data, around 24% of adults in Bassetlaw have reported that they feel lonely with a further 7.6% reporting that they often or always feel lonely. Recognising these concerns, Muslim Charity and Bassetlaw District Council has identified the need for community spaces that encourage social interaction. Bassetlaw has also seen an increase in its elderly population, with 22.33% of its residents aged 65 and over, compared to the England average of 19.43%. This ageing population can also be a contributing factor to loneliness statistics in our district.

'Happy To Chat' Benches – A Joint Initiative

In partnership with Bassetlaw District Council, Muslim Charity funded nine 'Happy to Chat' benches which have been installed at key locations frequented by elderly residents in the district.

These benches serve as a welcoming space for community members to sit and chat, fostering connections and alleviating feelings of loneliness. They are located at:

- ➔ Langold Country Park (2 benches)
- ➔ Costhorpe Cricket Ground (Carlton Cricket Club)
- ➔ Costhorpe Sports Field
- ➔ Tom Simpson Field, Harworth
- ➔ Snipe Park, Harworth
- ➔ London Road (near Whinney Moor Lane), Retford
- ➔ Pocket Park, corner of Sandy Lane and Gateford Road, Worksop (2 benches)

To celebrate this initiative, a handover ceremony was held at Muslim Charity's head office at Eaton Hall, Retford on Friday, 25th October 2024. This was attended by local dignitaries including Councillors from Bassetlaw District Council, representatives of Muslim Charity, Bassetlaw MP Jo White, community members, and other guests who represent or live in the communities where the 'Happy to Chat Benches' will be installed.

The benches, designed to 'Tackle loneliness one bench at a time,' are crafted from durable, eco-friendly recycled materials. Built to withstand the elements, they offer a lasting, low-maintenance addition to community spaces.

Attendees were warmly welcomed and inspired by heartfelt speeches, including words from Shaykh Muhammad Pirzada, Founder of Muslim Charity, who highlighted the charity's 'devotion to humanity' and its mission to build 'bridges of kindness through small deeds.' This commitment shines through the charity's efforts to deliver sustainable, accessible support to communities both locally and globally, reflecting a dedication to meaningful, lasting impact.

There were poem recitals by four very brave, outspoken children, delivered to a room full of adults. The children echoed the importance of connection, and community.

The guests enjoyed a traditional 'Desi' meal, which brought everyone together in conversation and connection. The gathering facilitated all those who attended, to feel a deeper sense of a wider community, irrespective of different faith, and beliefs. This message was reflected in Maroof Pirzada's speech, UK Director of Muslim Charity, Retford. A powerful reminder that we are all one family; the collective human family, with far more in common that unites us, than divides us.

The ceremony was attended by local leaders and dignitaries, highlighting strong community support for the initiative. Present were Jo White MP, Councillor Lynne Schuller (Cabinet Member for Health & Wellbeing, Bassetlaw District Council), Councillor Mike Quigley MBE, Councillor Josie Potts, and Councillor Julie Leigh, Leader of Bassetlaw District Council. The event also welcomed Wendy Quigley, Peter Clark (Head of Neighbourhood Services, Bassetlaw District Council), Councillor David Pidwell, Councillor Steve Scotthorne, Councillor Dan Henderson, Councillor Susan Shaw (Chair of Bassetlaw District Council), Councillor Lynn Dixon, Councillor Neil Sanders and Councillor Deborah Merryweather. Joining them were, Lord John Mann and Councillor David Naylor, Town Mayor of Retford. Their collective presence underscored a shared commitment to fostering community wellbeing and tackling issues of loneliness through the installation of the 'Happy to Chat' benches.



[Left] Councillor Susan Shaw is greeted by Councillor David Naylor, Retford Mayor.



[Right] Maroof Pirzada welcomes Jo White MP.



[Above, left to right] Councillor Lynne Schuller (Harworth, Cabinet Member for Health & Wellbeing, Bassetlaw District Council); Bakhtyar H.Pirzada (Chairman, Muslim Charity); Jo White MP (Bassetlaw).

[Below, left to right] Shaykh Muhammad Pirzada (Founder, Muslim Charity); Peter Clark (Head of Neighbourhood Services, Bassetlaw District Council)



Editor's footnote: For an overview of Muslim Charity's impact on communities, see article on page 23...



MUSLIM CHARITY

The Happy to Chat Benches project is the latest in Muslim Charity's series of initiatives aimed at fostering community spirit and supporting local wellbeing in Bassetlaw.

Muslim Charity has a long history of contributing to the Bassetlaw District and in 2022 organised several impactful projects, such as donating life-saving defibrillators to communities in Ranby and Sutton-cum-Lound and providing benches to commemorate the Queen's Platinum Jubilee, installed across Tuxford, Ranksill, Ranby, Mattersey, Rampton and Woodbeck and Headon cum Upton. The Charity has also partnered with the Bassetlaw Food Bank to support struggling individuals and families by providing food parcels. Additionally, Muslim Charity funded a Resuscitaire Unit for Bassetlaw Hospital to aid new-borns requiring resuscitation, further underscoring their commitment to the community's health.

Muslim Charity's impact spans both local and global communities, funding projects that bring transformative support to those in need. In the past few years, the charity has funded the installation of 5,812 water hand pumps, 1,090 water wells, and delivered 33 ambulances to remote regions, all made possible through generous donations. In the past year alone, 621 street children have been rescued, highlighting the charity's dedication to vulnerable individuals worldwide.

Learn more about Muslim Charity by visiting :

www.muslimcharity.org.uk

The charity also has a local initiative of selling pure, UK-produced honey, supporting British bees and their keepers with each purchase. Every jar sold helps fund the Feed a Child programme, which provides essential school meals to vulnerable children, enabling them to focus, learn, and stay in school. This initiative combines high-quality honey with the power to make a meaningful difference.

Bakhtyar Pirzada
Chairman, Muslim Charity

The planet has moved a major step closer to warming more than 1.5°C, new data shows, despite world leaders vowing a decade ago they would try to avoid this.

Computer Sage



Healing Computers

Need help or advice for your computer?
No problem too big or too small.

Hardware, software, virus, Windows, wireless, Internet, upgrades, training or just plain help and advice.

£30 ph, £60 max, no fix no fee, no callout.

Get the job done, 24/7 Call: 07807350355
Email: computersage999@gmail.com

Retford Badminton Club

We are a group of 'senior' men and women who like to play badminton for exercise and fun. We are looking for a few like-minded people to join us for, invariably, doubles games.

Our group plays from 19:00 to 21:00 on Wednesday evenings between September and May except for public holidays



We play at Barnby Memorial Hall, High Street, Blyth, S81 8EW. Our membership fees are very reasonable! If you are interested in joining us, please contact... Alan on 01777 703 991 or aghirst@googlemail.com Greg on 01777 700 918 or greg2know@gmail.com

Flights from Doncaster Airport to resume in 2026

December 2024 news from City of Doncaster Council Further updates in the new year on the planned reopening of Doncaster Sheffield airport can be expected in early 2025. The pledge came from City of Doncaster Mayor Ros Jones as an aircraft landed at the airport for the first time since the site was closed two years ago.

The airport is set to reopen in 2026 after the council agreed to lease the land from owners Peel Group which shut it in November 2022, saying it was unviable after Wizz Air withdrew operations.

An operator will be contracted to run the aviation business after an unnamed successful bidder was identified last month. Mayor Ros Jones said: "We know how important the airport is to local people and businesses so it is great to see an already established aviation business in our city being able to use the site again. I have made reopening our beloved airport my number one priority. We are still working steadfastly to reopen the airport by spring 2026 and there will be further news forthcoming in early 2025."

This news was also welcomed by Vulcan to the Sky Trust who's Vulvan B.2 VH558 has been based at the airport since 2011 when they announced that they had agreed a new lease with Doncaster Council to base their aircraft at the airport.

Editor



Local School Holidays through to July 2027.

Go to our community website (see bottom of front cover) for a link to Nottinghamshire County Council's website that has all of these holidays for you to view and download. These will not only be useful for parents of school children looking forward to holiday planning but also for those without school children responsibilities who are looking for the most economical times to book their holidays.

Latest Flooding Advice

See our community website (www.clarbrough-welham.org.uk) and follow the home page menu : **Local Environment > Flood Management** and Very latest Government flood warning near the top of that page..

Bassetlaw District Council's customer services are on the move temporarily from 17b The Square, in Retford.

From Monday 16th September, 2024 the Council's customer services team will be located at the Nottinghamshire County Council offices on Chancery Lane, located between Goodwin Hall and the Glass House. Other services based at 17b, including those provided by Nottinghamshire County Council and Citizen's Advice will also move to Chancery Lane, while Nottinghamshire Police will be moving to the Town Hall Yard.

Cllr Alan Rhodes, Cabinet Member for Corporate and Financial Services said: "Although we are temporarily moving our customer services team in Retford, it will be business as usual for those in the town seeking support and information.

"Our customer services team will be on hand as normal, or you can continue to access information online, while work is carried out on 17b The Square."

The temporary move, for around six months, is to allow decarbonisation work to take place which will not only reduce carbon emissions at the building but will help lower energy costs.

Public Transport Function to move to the East Midlands Combined County Authority (EMCCA).

Plans to move the running of public transport from local councils to the East Midlands Combined County Authority (EMCCA) Board were agreed w/c/ 16th December, 2024.

This transfer includes setting a clear plan for bus service improvements, concessionary fares, supported bus services, smart ticketing, passenger information provision, planning, infrastructure and more.

Mayor of the East Midlands, Claire Ward said: "By EMCCA becoming the main public transport body, it gives us a great opportunity to improve our travel networks right across the region. We want to transform transport opportunities for all those who live, work and do business in our region, as well as those who come to visit our amazing places.

To read more on this news item, go to: <https://www.eastmidlands-cca.gov.uk/news/public-transport-functions-to-move-to-east-midlands-combined-county-authority/> or our community website's **Public Sector > East Midlands CCA** page for the **Latest news from EMCCA here... link.**

Nottinghamshire Festival of Science & Curiosity



The annual festival which is all about showcasing a world of science and curiosity that's all around us every day. The festival is about inviting the people of Nottinghamshire to share not only what they know, but also what they would like to know; it's about celebrating curiosity, asking questions and taking a leading role in finding out the answers.

Locally, pupils at Nottinghamshire schools will be getting to grips with scientific investigations and learning in the week running up to February Half-term (Monday 10th – Friday 14th February) and a range of events will then be held at Retford's Bassetlaw Museum during half-term (15th - 21st February). Keep your eyes open for advertising coming soon!

Editor

Retford Business Forum

At the forum's meeting on 6th January it was noted that an Austrian broadcasting company will visit the STEP project at West Burton week commencing 13th January – it will be a worldwide news feature.

Newsletter editorial deadlines
 14th April (Summer issue)
 14th July (Autumn issue)

Newsletter Advertising rates for a whole year of four consecutive issues

Full page	£125.00
Half page	£75.00
Quarter page	£45.00
This size	£25.00

Contact Greg (01777) 700 918
clarbroughwelham@gmail.com

Special rates for 'one off' insertions
Yet again, our greatest thanks go to our tireless (!) team of volunteer distributors.